

INTERNATIONAL STANDARD

NORME INTERNATIONALE



**Safety of machinery –
Part 1: General requirements**

**Sécurité des machines –
Partie 1: Exigences générales**



THIS PUBLICATION IS COPYRIGHT PROTECTED
Copyright © 2021 IEC, Geneva, Switzerland

All rights reserved. Unless otherwise specified, no part of this publication may be reproduced or utilized in any form or by any means, electronic or mechanical, including photocopying and microfilm, without permission in writing from either IEC or IEC's member National Committee in the country of the requester. If you have any questions about IEC copyright or have an enquiry about obtaining additional rights to this publication, please contact the address below or your local IEC member National Committee for further information.

Droits de reproduction réservés. Sauf indication contraire, aucune partie de cette publication ne peut être reproduite ni utilisée sous quelque forme que ce soit et par aucun procédé, électronique ou mécanique, y compris la photocopie et les microfilms, sans l'accord écrit de l'IEC ou du Comité national de l'IEC du pays du demandeur. Si vous avez des questions sur le copyright de l'IEC ou si vous désirez obtenir des droits supplémentaires sur cette publication, utilisez les coordonnées ci-après ou contactez le Comité national de l'IEC de votre pays de résidence.

IEC Central Office
3, rue de Varembe
CH-1211 Geneva 20
Switzerland

Tel.: +41 22 919 02 11
info@iec.ch
www.iec.ch

About the IEC

The International Electrotechnical Commission (IEC) is the leading global organization that prepares and publishes International Standards for all electrical, electronic and related technologies.

About IEC publications

The technical content of IEC publications is kept under constant review by the IEC. Please make sure that you have the latest edition, a corrigendum or an amendment might have been published.

IEC publications search - webstore.iec.ch/advsearchform

The advanced search enables to find IEC publications by a variety of criteria (reference number, text, technical committee, ...). It also gives information on projects, replaced and withdrawn publications.

IEC Just Published - webstore.iec.ch/justpublished

Stay up to date on all new IEC publications. Just Published details all new publications released. Available online and once a month by email.

IEC Customer Service Centre - webstore.iec.ch/csc

If you wish to give us your feedback on this publication or need further assistance, please contact the Customer Service Centre: sales@iec.ch.

IEC online collection - oc.iec.ch

Discover our powerful search engine and read freely all the publications previews. With a subscription you will always have access to up to date content tailored to your needs.

Electropedia - www.electropedia.org

The world's leading online dictionary on electrotechnology, containing more than 22 000 terminological entries in English and French, with equivalent terms in 18 additional languages. Also known as the International Electrotechnical Vocabulary (IEV) online.

A propos de l'IEC

La Commission Electrotechnique Internationale (IEC) est la première organisation mondiale qui élabore et publie des Normes internationales pour tout ce qui a trait à l'électricité, à l'électronique et aux technologies apparentées.

A propos des publications IEC

Le contenu technique des publications IEC est constamment revu. Veuillez vous assurer que vous possédez l'édition la plus récente, un corrigendum ou amendement peut avoir été publié.

Recherche de publications IEC - webstore.iec.ch/advsearchform

La recherche avancée permet de trouver des publications IEC en utilisant différents critères (numéro de référence, texte, comité d'études, ...). Elle donne aussi des informations sur les projets et les publications remplacées ou retirées.

IEC Just Published - webstore.iec.ch/justpublished

Restez informé sur les nouvelles publications IEC. Just Published détaille les nouvelles publications parues. Disponible en ligne et une fois par mois par email.

Service Clients - webstore.iec.ch/csc

Si vous désirez nous donner des commentaires sur cette publication ou si vous avez des questions contactez-nous: sales@iec.ch.

IEC online collection - oc.iec.ch

Découvrez notre puissant moteur de recherche et consultez gratuitement tous les aperçus des publications. Avec un abonnement, vous aurez toujours accès à un contenu à jour adapté à vos besoins.

Electropedia - www.electropedia.org

Le premier dictionnaire d'électrotechnologie en ligne au monde, avec plus de 22 000 articles terminologiques en anglais et en français, ainsi que les termes équivalents dans 16 langues additionnelles. Egalement appelé Vocabulaire Electrotechnique International (IEV) en ligne.



IEC 60204-1

Edition 6.1 2021-09
CONSOLIDATED VERSION

INTERNATIONAL STANDARD

NORME INTERNATIONALE



**Safety of machinery –
Part 1: General requirements**

**Sécurité des machines –
Partie 1: Exigences générales**

INTERNATIONAL
ELECTROTECHNICAL
COMMISSION

COMMISSION
ELECTROTECHNIQUE
INTERNATIONALE

ICS 13.110; 29.020

ISBN 978-2-8322-1029-6

**Warning! Make sure that you obtained this publication from an authorized distributor.
Attention! Veuillez vous assurer que vous avez obtenu cette publication via un distributeur agréé.**

REDLINE VERSION

VERSION REDLINE



**Safety of machinery –
Part 1: General requirements**

**Sécurité des machines –
Partie 1: Exigences générales**

CONTENTS

FOREWORD.....	10
INTRODUCTION.....	13
1 Scope.....	15
2 Normative references.....	16
3 Terms, definitions and abbreviated terms	17
3.1 Terms and definitions	17
3.2 Abbreviated terms	26
4 General requirements	26
4.1 General.....	26
4.2 Selection of equipment.....	27
4.2.1 General	27
4.2.2 Switchgear.....	28
4.3 Electrical supply.....	28
4.3.1 General	28
4.3.2 AC supplies	28
4.3.3 DC supplies	28
4.3.4 Special supply systems	28
4.4 Physical environment and operating conditions.....	29
4.4.1 General	29
4.4.2 Electromagnetic compatibility (EMC)	29
4.4.3 Ambient air temperature	29
4.4.4 Humidity	29
4.4.5 Altitude	29
4.4.6 Contaminants.....	30
4.4.7 Ionizing and non-ionizing radiation	30
4.4.8 Vibration, shock, and bump	30
4.5 Transportation and storage.....	30
4.6 Provisions for handling.....	30
5 Incoming supply conductor terminations and devices for disconnecting and switching off	30
5.1 Incoming supply conductor terminations	30
5.2 Terminal for connection of the external protective conductor	31
5.3 Supply disconnecting (isolating) device.....	31
5.3.1 General	31
5.3.2 Type	32
5.3.3 Requirements	32
5.3.4 Operating means of the supply disconnecting device	33
5.3.5 Excepted circuits.....	33
5.4 Devices for removal of power for prevention of unexpected start-up	34
5.5 Devices for isolating electrical equipment	35
5.6 Protection against unauthorized, inadvertent and/or mistaken connection.....	35
6 Protection against electric shock.....	35
6.1 General.....	35
6.2 Basic protection	36
6.2.1 General	36
6.2.2 Protection by enclosures	36

6.2.3	Protection by insulation of live parts	37
6.2.4	Protection against residual voltages	37
6.2.5	Protection by barriers	37
6.2.6	Protection by placing out of reach or protection by obstacles	37
6.3	Fault protection	38
6.3.1	General	38
6.3.2	Prevention of the occurrence of a touch voltage	38
6.3.3	Protection by automatic disconnection of supply	38
6.4	Protection by the use of PELV	39
6.4.1	General requirements	39
6.4.2	Sources for PELV	40
7	Protection of equipment	40
7.1	General	40
7.2	Overcurrent protection	41
7.2.1	General	41
7.2.2	Supply conductors	41
7.2.3	Power circuits	41
7.2.4	Control circuits	41
7.2.5	Socket outlets and their associated conductors	42
7.2.6	Lighting circuits	42
7.2.7	Transformers	42
7.2.8	Location of overcurrent protective devices	42
7.2.9	Overcurrent protective devices	42
7.2.10	Rating and setting of overcurrent protective devices	42
7.3	Protection of motors against overheating	43
7.3.1	General	43
7.3.2	Overload protection	43
7.3.3	Over-temperature protection	43
7.4	Protection against abnormal temperature	44
7.5	Protection against the effects of supply interruption or voltage reduction and subsequent restoration	44
7.6	Motor overspeed protection	44
7.7	Additional earth fault/residual current protection	44
7.8	Phase sequence protection	45
7.9	Protection against overvoltages due to lightning and to switching surges	45
7.10	Short-circuit current rating	45
8	Equipotential bonding	46
8.1	General	46
8.2	Protective bonding circuit	48
8.2.1	General	48
8.2.2	Protective conductors	48
8.2.3	Continuity of the protective bonding circuit	49
8.2.4	Protective conductor connecting points	50
8.2.5	Mobile machines	50
8.2.6	Additional requirements for electrical equipment having earth leakage currents higher than 10 mA	50
8.3	Measures to restrict the effects of high leakage current	51
8.4	Functional bonding	51
9	Control circuits and control functions	51

9.1	Control circuits	51
9.1.1	Control circuit supply.....	51
9.1.2	Control circuit voltages.....	52
9.1.3	Protection	52
9.2	Control functions	52
9.2.1	General	52
9.2.2	Categories of stop functions	52
9.2.3	Operation.....	52
9.2.4	Cableless control system (CCS)	56
9.3	Protective interlocks	58
9.3.1	Reclosing or resetting of an interlocking safeguard	58
9.3.2	Exceeding operating limits.....	58
9.3.3	Operation of auxiliary functions	58
9.3.4	Interlocks between different operations and for contrary motions.....	58
9.3.5	Reverse current braking	59
9.3.6	Suspension of safety functions and/or protective measures.....	59
9.4	Control functions in the event of failure	59
9.4.1	General requirements.....	59
9.4.2	Measures to minimize risk in the event of failure	60
9.4.3	Protection against malfunction of control circuits.....	61
10	Operator interface and machine-mounted control devices	68
10.1	General.....	68
10.1.1	General requirements.....	68
10.1.2	Location and mounting	68
10.1.3	Protection	68
10.1.4	Position sensors	68
10.1.5	Portable and pendant control stations.....	69
10.2	Actuators	69
10.2.1	Colours.....	69
10.2.2	Markings.....	69
10.3	Indicator lights and displays	70
10.3.1	General	70
10.3.2	Colours.....	70
10.3.3	Flashing lights and displays.....	71
10.4	Illuminated push-buttons	71
10.5	Rotary control devices.....	71
10.6	Start devices.....	71
10.7	Emergency stop devices.....	72
10.7.1	Location of emergency stop devices	72
10.7.2	Types of emergency stop device	72
10.7.3	Operation of the supply disconnecting device to effect emergency stop.....	72
10.8	Emergency switching off devices	72
10.8.1	Location of emergency switching off devices.....	72
10.8.2	Types of emergency switching off device	72
10.8.3	Local operation of the supply disconnecting device to effect emergency switching off.....	73
10.9	Enabling control device	73
11	Controlgear: location, mounting, and enclosures	73
11.1	General requirements.....	73

11.2	Location and mounting	73
11.2.1	Accessibility and maintenance.....	73
11.2.2	Physical separation or grouping.....	74
11.2.3	Heating effects.....	74
11.3	Degrees of protection	75
11.4	Enclosures, doors and openings.....	75
11.5	Access to electrical equipment	76
12	Conductors and cables	76
12.1	General requirements.....	76
12.2	Conductors	76
12.3	Insulation	77
12.4	Current-carrying capacity in normal service	77
12.5	Conductor and cable voltage drop	78
12.6	Flexible cables	79
12.6.1	General	79
12.6.2	Mechanical rating.....	79
12.6.3	Current-carrying capacity of cables wound on drums	79
12.7	Conductor wires, conductor bars and slip-ring assemblies.....	80
12.7.1	Basic protection	80
12.7.2	Protective conductors.....	80
12.7.3	Protective conductor current collectors	80
12.7.4	Removable current collectors with a disconnecter function.....	81
12.7.5	Clearances in air.....	81
12.7.6	Creepage distances	81
12.7.7	Conductor system sectioning.....	81
12.7.8	Construction and installation of conductor wire, conductor bar systems and slip-ring assemblies.....	81
13	Wiring practices.....	82
13.1	Connections and routing.....	82
13.1.1	General requirements.....	82
13.1.2	Conductor and cable runs	82
13.1.3	Conductors of different circuits.....	83
13.1.4	AC circuits – Electromagnetic effects (prevention of eddy currents).....	83
13.1.5	Connection between pick-up and pick-up converter of an inductive power supply system.....	83
13.2	Identification of conductors.....	83
13.2.1	General requirements.....	83
13.2.2	Identification of the protective conductor / protective bonding conductor.....	84
13.2.3	Identification of the neutral conductor	84
13.2.4	Identification by colour	85
13.3	Wiring inside enclosures.....	85
13.4	Wiring outside enclosures	86
13.4.1	General requirements.....	86
13.4.2	External ducts	86
13.4.3	Connection to moving elements of the machine	86
13.4.4	Interconnection of devices on the machine	87
13.4.5	Plug/socket combinations	87
13.4.6	Dismantling for shipment.....	88
13.4.7	Additional conductors.....	88

13.5	Ducts, connection boxes and other boxes	88
13.5.1	General requirements.....	88
13.5.2	Rigid metal conduit and fittings.....	89
13.5.3	Flexible metal conduit and fittings.....	89
13.5.4	Flexible non-metallic conduit and fittings	89
13.5.5	Cable trunking systems	90
13.5.6	Machine compartments and cable trunking systems	90
13.5.7	Connection boxes and other boxes	90
13.5.8	Motor connection boxes	90
14	Electric motors and associated equipment.....	90
14.1	General requirements.....	90
14.2	Motor enclosures	90
14.3	Motor dimensions.....	91
14.4	Motor mounting and compartments	91
14.5	Criteria for motor selection	91
14.6	Protective devices for mechanical brakes	91
15	Socket-outlets and lighting.....	92
15.1	Socket-outlets for accessories	92
15.2	Local lighting of the machine and of the equipment	92
15.2.1	General	92
15.2.2	Supply	92
15.2.3	Protection	93
15.2.4	Fittings	93
16	Marking, warning signs and reference designations	93
16.1	General.....	93
16.2	Warning signs	93
16.2.1	Electric shock hazard	93
16.2.2	Hot surfaces hazard	94
16.3	Functional identification.....	94
16.4	Marking of enclosures of electrical equipment.....	94
16.5	Reference designations	95
17	Technical documentation	95
17.1	General.....	95
17.2	Information related to the electrical equipment.....	95
18	Verification	96
18.1	General.....	96
18.2	Verification of conditions for protection by automatic disconnection of supply	97
18.2.1	General	97
18.2.2	Test 1 – Verification of the continuity of the protective bonding circuit	97
18.2.3	Test 2 – Fault loop impedance verification and suitability of the associated overcurrent protective device	97
18.2.4	Application of the test methods for TN-systems.....	98
18.3	Insulation resistance tests	100
18.4	Voltage tests	101
18.5	Protection against residual voltages	101
18.6	Functional tests.....	101
18.7	Retesting	101
Annex A	(normative) Fault protection by automatic disconnection of supply.....	102

A.1	Fault protection for machines supplied from TN-systems	102
A.1.1	General	102
A.1.2	Conditions for protection by automatic disconnection of the supply by overcurrent protective devices	102
A.1.3	Condition for protection by reducing the touch voltage below 50 V	103
A.1.4	Verification of conditions for protection by automatic disconnection of the supply	104
A.2	Fault protection for machines supplied from TT-systems	106
A.2.1	Connection to earth.....	106
A.2.2	Fault protection for TT systems	106
A.2.3	Verification of protection by automatic disconnection of supply using a residual current protective device	107
A.2.4	Measurement of the fault loop impedance (Z_S).....	108
Annex B (informative)	Enquiry form for the electrical equipment of machines	110
Annex C (informative)	Examples of machines covered by this part of IEC 60204	114
Annex D (informative)	Current-carrying capacity and overcurrent protection of conductors and cables in the electrical equipment of machines	116
D.1	General.....	116
D.2	General operating conditions	116
D.2.1	Ambient air temperature	116
D.2.2	Methods of installation	116
D.2.3	Grouping.....	118
D.2.4	Classification of conductors.....	119
D.3	Co-ordination between conductors and protective devices providing overload protection.....	119
D.4	Overcurrent protection of conductors	120
D.5	Effect of harmonic currents on balanced three-phase systems.....	121
Annex E (informative)	Explanation of emergency operation functions	122
Annex F (informative)	Guide for the use of this part of IEC 60204	123
Annex G (informative)	Comparison of typical conductor cross-sectional areas	125
Annex H (informative)	Measures to reduce the effects of electromagnetic influences	127
H.1	Definitions.....	127
H.1.1	apparatus	127
H.1.2	fixed installation	127
H.2	General.....	127
H.3	Mitigation of electromagnetic interference (EMI).....	128
H.3.1	General	128
H.3.2	Measures to reduce EMI	128
H.4	Separation and segregation of cables	129
H.5	Power supply of a machine by parallel sources	132
H.6	Supply impedance where a Power Drive System (PDS) is used	132
Annex I (informative)	Documentation / Information	133
Bibliography	135
Figure 1	– Block diagram of a typical machine	14
Figure 2	– Disconnecter isolator	33
Figure 3	– Disconnecting circuit breaker	33
Figure 4	– Example of equipotential bonding for electrical equipment of a machine	47

Figure 5 – Symbol IEC 60417-5019: Protective earth	50
Figure 6 – Symbol IEC 60417-5020: Frame or chassis	51
Figure 7 – Method a) Earthed control circuit fed by a transformer	62
Figure 8 – Method b1) Non-earthed control circuit fed by transformer	63
Figure 9 – Method b2) Non-earthed control circuit fed by transformer	63
Figure 10 – Method b3) Non-earthed control circuit fed by transformer	64
Figure 11 – Method c) Control circuits fed by transformer with an earthed centre-tap winding	65
Figure 12 – Method d1a) Control circuit without transformer connected between a phase and the neutral of an earthed supply system	66
Figure 13 – Method d1b) Control circuit without transformer connected between two phases of an earthed supply system	66
Figure 14 – Method d2a) Control circuit without transformer connected between phase and neutral of a non-earthed supply system	67
Figure 15 – Method d2b) control circuit without transformer connected between two phases of a non-earthed supply system	67
Figure 16 – Symbol IEC 60417-5019	84
Figure 17 – Symbol IEC 60417-5021	84
Figure 18 – Symbol ISO 7010-W012	94
Figure 19 – Symbol ISO 7010-W017	94
Figure A.1 – Typical arrangement for fault loop impedance (Z_S) measurement in TN systems	105
Figure A.2 – Typical arrangement for fault loop impedance (Z_S) measurement for power drive system circuits in TN systems	105
Figure A.3 – Typical arrangement for fault loop impedance (Z_S) measurement in TT systems	108
Figure A.4 – Typical arrangement for fault loop impedance (Z_S) measurement for power drive system circuits in TT systems	109
Figure D.1 – Methods of conductor and cable installation independent of number of conductors/cables	117
Figure D.2 – Parameters of conductors and protective devices	119
Figure H.1 – By-pass conductor for screen reinforcement	128
Figure H.2 – Examples of vertical separation and segregation	130
Figure H.3 – Examples of horizontal separation and segregation	130
Figure H.4 – Cable arrangements in metal cable trays	131
Figure H.5 – Connections between metal cable trays or cable trunking systems	131
Figure H.6 – Interruption of metal cable trays at fire barriers	132
Table 1 – Minimum cross-sectional area of copper protective conductors	31
Table 2 – Symbols for actuators (Power)	70
Table 3 – Symbols for actuators (Machine operation)	70
Table 4 – Colours for indicator lights and their meanings with respect to the condition of the machine	71
Table 5 – Minimum cross-sectional areas of copper conductors	77
Table 6 – Examples of current-carrying capacity (I_Z) of PVC insulated copper conductors or cables under steady-state conditions in an ambient air temperature of +40 °C for different methods of installation	78

Table 7 – Derating factors for cables wound on drums	80
Table 8 – Minimum permitted bending radii for the forced guiding of flexible cables.....	87
Table 9 – Application of the test methods for TN-systems	99
Table 10 – Examples of maximum cable lengths from protective devices to their loads for TN-systems	100
Table A.1 – Maximum disconnecting times for TN systems	102
Table A.2 – Maximum disconnecting time for TT-systems	107
Table D.1 – Correction factors.....	116
Table D.2 – Derating factors for I_Z for grouping	118
Table D.3 – Derating factors for I_Z for multicore cables up to 10 mm ²	118
Table D.4 – Classification of conductors.....	119
Table D.5 – Maximum allowable conductor temperatures under normal and short- circuit conditions.....	120
Table F.1 – Application options	124
Table G.1 – Comparison of conductor sizes.....	125
Table H.1 – Minimum separation distances using metallic containment as illustrated in Figure H.2	129
Table I.1 – Documentation / Information that can be applicable.....	133

INTERNATIONAL ELECTROTECHNICAL COMMISSION

**SAFETY OF MACHINERY –
ELECTRICAL EQUIPMENT OF MACHINES –****Part 1: General requirements****FOREWORD**

- 1) The International Electrotechnical Commission (IEC) is a worldwide organization for standardization comprising all national electrotechnical committees (IEC National Committees). The object of IEC is to promote international co-operation on all questions concerning standardization in the electrical and electronic fields. To this end and in addition to other activities, IEC publishes International Standards, Technical Specifications, Technical Reports, Publicly Available Specifications (PAS) and Guides (hereafter referred to as “IEC Publication(s)”). Their preparation is entrusted to technical committees; any IEC National Committee interested in the subject dealt with may participate in this preparatory work. International, governmental and non-governmental organizations liaising with the IEC also participate in this preparation. IEC collaborates closely with the International Organization for Standardization (ISO) in accordance with conditions determined by agreement between the two organizations.
- 2) The formal decisions or agreements of IEC on technical matters express, as nearly as possible, an international consensus of opinion on the relevant subjects since each technical committee has representation from all interested IEC National Committees.
- 3) IEC Publications have the form of recommendations for international use and are accepted by IEC National Committees in that sense. While all reasonable efforts are made to ensure that the technical content of IEC Publications is accurate, IEC cannot be held responsible for the way in which they are used or for any misinterpretation by any end user.
- 4) In order to promote international uniformity, IEC National Committees undertake to apply IEC Publications transparently to the maximum extent possible in their national and regional publications. Any divergence between any IEC Publication and the corresponding national or regional publication shall be clearly indicated in the latter.
- 5) IEC itself does not provide any attestation of conformity. Independent certification bodies provide conformity assessment services and, in some areas, access to IEC marks of conformity. IEC is not responsible for any services carried out by independent certification bodies.
- 6) All users should ensure that they have the latest edition of this publication.
- 7) No liability shall attach to IEC or its directors, employees, servants or agents including individual experts and members of its technical committees and IEC National Committees for any personal injury, property damage or other damage of any nature whatsoever, whether direct or indirect, or for costs (including legal fees) and expenses arising out of the publication, use of, or reliance upon, this IEC Publication or any other IEC Publications.
- 8) Attention is drawn to the Normative references cited in this publication. Use of the referenced publications is indispensable for the correct application of this publication.
- 9) Attention is drawn to the possibility that some of the elements of this IEC Publication may be the subject of patent rights. IEC shall not be held responsible for identifying any or all such patent rights.

This consolidated version of the official IEC Standard and its amendment has been prepared for user convenience.

IEC 60204-1 edition 6.1 contains the sixth edition (2016-10) [documents 44/765/FDIS and 44/771/RVD] and its amendment 1 (2021-09) [documents 44/884/CDV and 44/913/RVC].

In this Redline version, a vertical line in the margin shows where the technical content is modified by amendment 1. Additions are in green text, deletions are in strikethrough red text. A separate Final version with all changes accepted is available in this publication.

International Standard IEC 60204-1 has been prepared by IEC technical committee 44: Safety of machinery – Electrotechnical aspects.

This sixth edition constitutes a technical revision.

This edition includes the following significant technical changes with respect to the previous edition:

- a) added requirements to address applications involving power drive systems (PDS);
- b) revised electromagnetic compatibility (EMC) requirements;
- c) clarified overcurrent protection requirements;
- d) requirements for determination of the short circuit current rating of the electrical equipment;
- e) revised protective bonding requirements and terminology;
- f) reorganization and revision to Clause 9, including requirements pertaining to safe torque off of PDS, emergency stop, and control circuit protection;
- g) revised symbols for actuators of control devices;
- h) revised technical documentation requirements;
- i) general updating to current special national conditions, normative standards, and bibliographical references.

This publication has been drafted in accordance with the ISO/IEC Directives, Part 2.

A list of all parts in the IEC 60204 series, published under the general title *Safety of machinery – Electrical equipment of machines*, can be found on the IEC website.

The following differing practices of a less permanent nature exist in the countries indicated below.

- 4.3.1: The voltage characteristics of electricity supplied by public distribution systems in Europe are given in EN 50160:2010.
- 5.1: Exception is not allowed (USA).
- 5.1: TN-C systems are not permitted in low-voltage installations in buildings (Norway).
- 5.2: Terminals for the connection of the protective earthing conductors may be identified by the colour green, the letters “G” or “GR” or “GRD” or “GND”, or the word “ground” or “grounding”, or with the graphical symbol IEC 60417-5019:2006-08 or any combination (USA).
- 6.3.3 b), 13.4.5 b), 18.2.1: TT power systems are not allowed (USA).
- 6.3.3, 18.2, Annex A: TN systems are not used. TT systems are the national standard (Japan).
- 6.3.3 b): The use of residual current protective devices with a rated residual operating current ~~not exceeding 1 A~~ which is coordinated with the earth electrode resistance is mandatory in TT systems as a means for fault protection by automatic disconnection of supply (Italy).
- 7.2.3: Disconnection of the neutral conductor is mandatory in a TN-S system (France ~~and Norway~~).
- 7.2.3: Disconnection of the neutral conductor is mandatory in TN-systems (Norway).
- 7.2.3: Third paragraph: distribution of a neutral conductor with an IT system is not allowed (USA and Norway).
- 7.10: For evaluation of short circuit ratings the requirements of UL 508A Supplement SB, may be used (USA).
- 8.2.2: See IEC 60364-5-54:2011, Annex E List of notes concerning certain countries.

- 9.1.2: Maximum nominal AC control circuit voltage is 120 V (USA).
- 12.2: Only stranded conductors are allowed on machines, except for 0,2 mm² solid conductors within enclosures (USA).
- 12.2: The smallest power circuit conductor allowed on machines is 0,82 mm² (AWG 18) in multiconductor cables or in enclosures (USA).
- Table 5: Cross-sectional area is specified in NFPA 79 using American Wire Gauge (AWG) (USA). See Annex G.
- 13.2.2: For the protective conductor, the colour identification GREEN (with or without YELLOW stripes) is used as equivalent to the bicolour combination GREEN-AND-YELLOW (USA and Canada).
- 13.2.3: The colour identification WHITE or GREY is used for earthed neutral conductors instead of the colour identification BLUE (USA and Canada).
- 15.2.2: First paragraph: Maximum value between conductors 150 V (USA).
- 15.2.2: Second paragraph, 5th bullet: The full load current rating of lighting circuits does not exceed 15 A (USA).
- 16.4: Nameplate marking requirements (USA).
- A.2.2.2: The permissible maximum value of R_A is regulated (e.g. when $U_o \geq 300V$, R_A shall be less than 10 Ω , when $U_o < 300 V$, R_A shall be less than 100 Ω , U_o is the nominal AC line to earth voltage in volts (V) (Japan).
- A.2.2.2: The maximum permissible value of R_A is 83 Ω (Netherlands).

The committee has decided that the contents of the base publication and its amendment will remain unchanged until the stability date indicated on the IEC web site under webstore.iec.ch in the data related to the specific publication. At this date, the publication will be

- reconfirmed,
- withdrawn,
- replaced by a revised edition, or
- amended.

IMPORTANT – The 'colour inside' logo on the cover page of this publication indicates that it contains colours which are considered to be useful for the correct understanding of its contents. Users should therefore print this document using a colour printer.

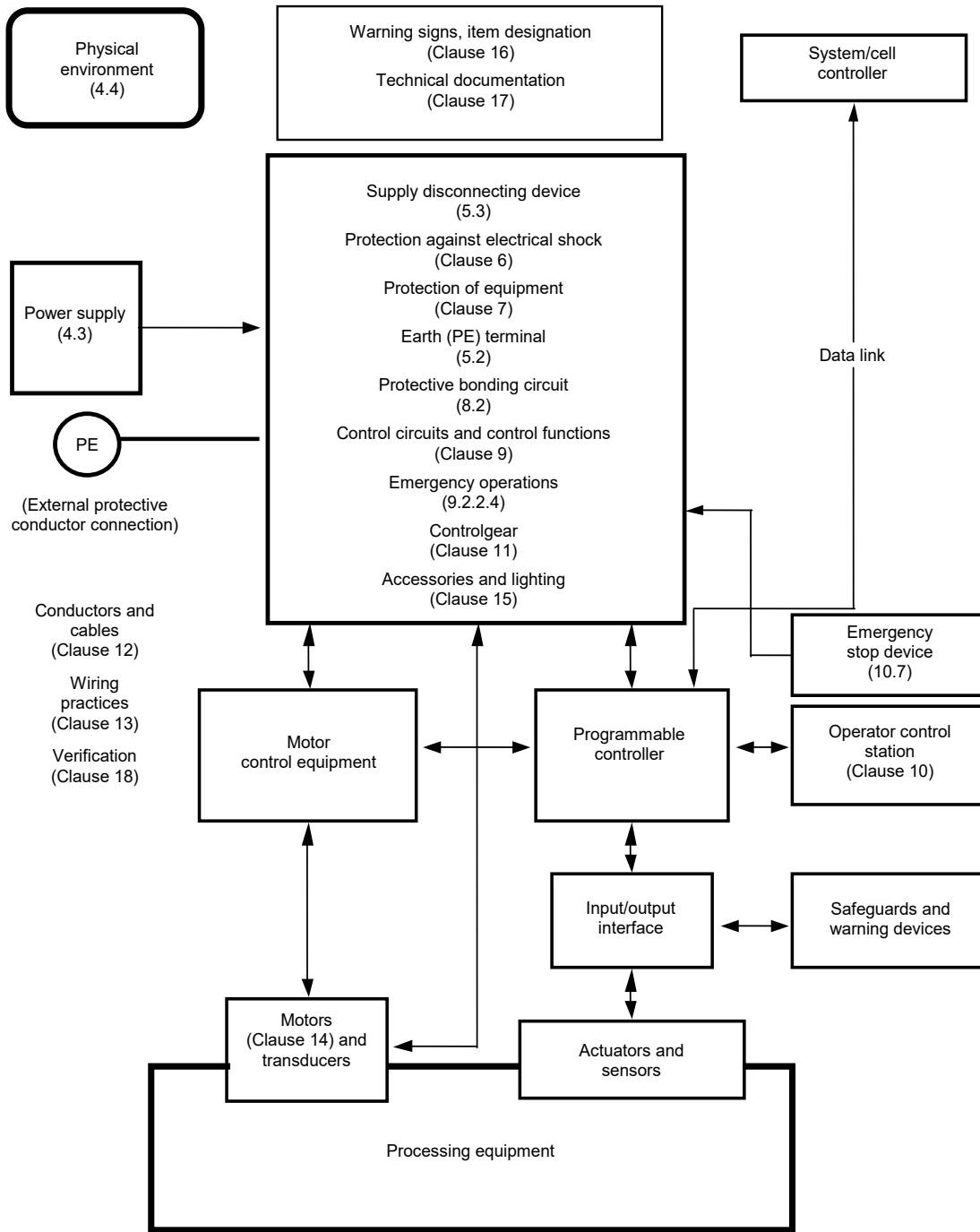
INTRODUCTION

This part of IEC 60204 provides requirements and recommendations relating to the electrical equipment of machines so as to promote:

- safety of persons and property;
- consistency of control response;
- ease of operation and maintenance.

More guidance on the use of this part of IEC 60204 is given in Annex F.

Figure 1 has been provided as an aid to the understanding of the inter-relationship of the various elements of a machine and its associated equipment. Figure 1 is a block diagram of a typical machine and associated equipment showing the various elements of the electrical equipment addressed in this part of IEC 60204. Numbers in parentheses () refer to Clauses and Subclauses in this part of IEC 60204. It is understood in Figure 1 that all of the elements taken together including the safeguards, tooling/fixturing, software, and the documentation, constitute the machine, and that one or more machines working together with usually at least one level of supervisory control constitute a manufacturing cell or system.



IEC

Figure 1 – Block diagram of a typical machine

SAFETY OF MACHINERY – ELECTRICAL EQUIPMENT OF MACHINES –

Part 1: General requirements

1 Scope

This part of IEC 60204 applies to electrical, electronic and programmable electronic equipment and systems to machines not portable by hand while working, including a group of machines working together in a co-ordinated manner.

NOTE 1 This part of IEC 60204 is an application standard and is not intended to limit or inhibit technological advancement.

NOTE 2 In this part of IEC 60204, the term “electrical” includes electrical, electronic and programmable electronic matters (i.e. “electrical equipment” means electrical, electronic and programmable electronic equipment).

NOTE 3 In the context of this part of IEC 60204, the term “person” refers to any individual and includes those persons who are assigned and instructed by the user or his agent(s) in the use and care of the machine in question.

The equipment covered by this part of IEC 60204 commences at the point of connection of the supply to the electrical equipment of the machine (see 5.1).

NOTE 4 The requirements for the electrical supply installation are given in the IEC 60364 series.

This part of IEC 60204 is applicable to the electrical equipment or parts of the electrical equipment that operate with nominal supply voltages not exceeding 1 000 V for alternating current (AC) and not exceeding 1 500 V for direct current (DC), and with nominal supply frequencies not exceeding 200 Hz.

NOTE 5 Information on electrical equipment or parts of the electrical equipment that operate with higher nominal supply voltages can be found in IEC 60204-11.

This part of IEC 60204 does not cover all the requirements (for example guarding, interlocking, or control) that are needed or required by other standards or regulations in order to protect persons from hazards other than electrical hazards. Each type of machine has unique requirements to be accommodated to provide adequate safety.

This part of IEC 60204 specifically includes, but is not limited to, the electrical equipment of machines as defined in 3.1.40.

NOTE 6 Annex C lists examples of machines whose electrical equipment can be covered by this part of IEC 60204.

This part of IEC 60204 does not specify additional and special requirements that can apply to the electrical equipment of machines that, for example:

- are intended for use in open air (i.e. outside buildings or other protective structures);
- use, process, or produce potentially explosive material (for example paint or sawdust);
- are intended for use in potentially explosive and/or flammable atmospheres;
- have special risks when producing or using certain materials;
- are intended for use in mines;
- are sewing machines, units, and systems (which are covered by IEC 60204-31);
- are hoisting machines (which are covered by IEC 60204-32);
- are semiconductor fabrication equipment (which are covered by IEC 60204-33).