

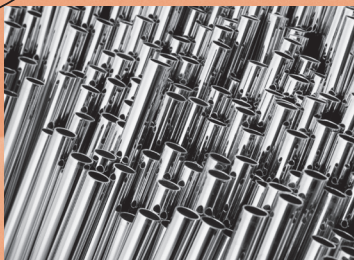
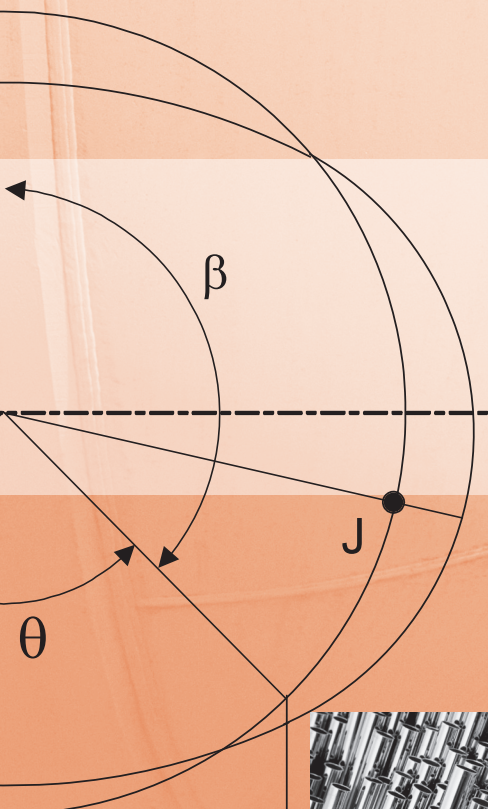
2010 ASME Boiler and Pressure Vessel Code

AN INTERNATIONAL CODE

II

Part D Properties (Customary)

Materials



AN INTERNATIONAL CODE

2010 ASME Boiler & Pressure Vessel Code

2010 Edition

July 1, 2010

II

Part D

Properties (Customary)

MATERIALS

ASME Boiler and Pressure Vessel Committee on Materials



Three Park Avenue • New York, NY • 10016 USA

Copyright © 2010 by the American Society of Mechanical Engineers.
No reproduction may be made of this material without written consent of ASME.



Date of Issuance: July 1, 2010
(Includes all Addenda dated July 2009 and earlier)

This international code or standard was developed under procedures accredited as meeting the criteria for American National Standards and it is an American National Standard. The Standards Committee that approved the code or standard was balanced to assure that individuals from competent and concerned interests have had an opportunity to participate. The proposed code or standard was made available for public review and comment that provides an opportunity for additional public input from industry, academia, regulatory agencies, and the public-at-large.

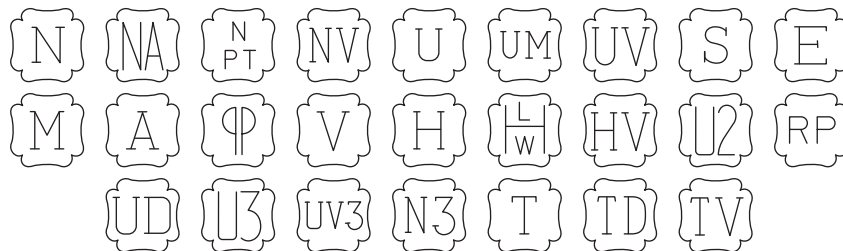
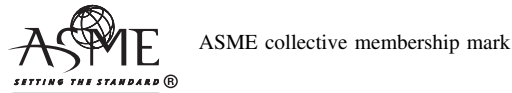
ASME does not “approve,” “rate,” or “endorse” any item, construction, proprietary device, or activity.

ASME does not take any position with respect to the validity of any patent rights asserted in connection with any items mentioned in this document, and does not undertake to insure anyone utilizing a standard against liability for infringement of any applicable letters patent, nor assume any such liability. Users of a code or standard are expressly advised that determination of the validity of any such patent rights, and the risk of infringement of such rights, is entirely their own responsibility.

Participation by federal agency representative(s) or person(s) affiliated with industry is not to be interpreted as government or industry endorsement of this code or standard.

ASME accepts responsibility for only those interpretations of this document issued in accordance with the established ASME procedures and policies, which precludes the issuance of interpretations by individuals.

The footnotes in this document are part of this American National Standard.



The above ASME symbols are registered in the U.S. Patent Office.

“ASME” is the trademark of the American Society of Mechanical Engineers.

No part of this document may be reproduced in any form, in an electronic retrieval system or otherwise, without the prior written permission of the publisher.

Library of Congress Catalog Card Number: 56-3934
Printed in the United States of America

Adopted by the Council of the American Society of Mechanical Engineers, 1914.
Revised 1940, 1941, 1943, 1946, 1949, 1952, 1953, 1956, 1959, 1962, 1965, 1968, 1971, 1974, 1977, 1980, 1983, 1986,
1989, 1992, 1995, 1998, 2001, 2004, 2007, 2010

The American Society of Mechanical Engineers
Three Park Avenue, New York, NY 10016-5990

Copyright © 2010 by
THE AMERICAN SOCIETY OF MECHANICAL ENGINEERS
All Rights Reserved



AN INTERNATIONAL CODE

2010 ASME Boiler & Pressure Vessel Code

2011a Addenda

July 1, 2011

II

Part D

Properties (Customary)

MATERIALS

ASME Boiler and Pressure Vessel Committee on Materials



The American Society of
Mechanical Engineers

Three Park Avenue • New York, NY • 10016 USA



Copyright © 2011 by the American Society of Mechanical Engineers.
No reproduction may be made of this material without written consent of ASME.



X02D11

Date of Issuance: July 1, 2011

This international code or standard was developed under procedures accredited as meeting the criteria for American National Standards and it is an American National Standard. The Standards Committee that approved the code or standard was balanced to assure that individuals from competent and concerned interests have had an opportunity to participate. The proposed code or standard was made available for public review and comment that provides an opportunity for additional public input from industry, academia, regulatory agencies, and the public-at-large.

ASME does not “approve,” “rate,” or “endorse” any item, construction, proprietary device, or activity.

ASME does not take any position with respect to the validity of any patent rights asserted in connection with any items mentioned in this document, and does not undertake to insure anyone utilizing a standard against liability for infringement of any applicable letters patent, nor assume any such liability. Users of a code or standard are expressly advised that determination of the validity of any such patent rights, and the risk of infringement of such rights, is entirely their own responsibility.

Participation by federal agency representative(s) or person(s) affiliated with industry is not to be interpreted as government or industry endorsement of this code or standard.

ASME accepts responsibility for only those interpretations of this document issued in accordance with the established ASME procedures and policies, which precludes the issuance of interpretations by individuals.

The footnotes in this document are part of this American National Standard.

No part of this document may be reproduced in any form, in an electronic retrieval system or otherwise, without the prior written permission of the publisher.

Library of Congress Catalog Card Number: 56-3934
Printed in the United States of America

The American Society of Mechanical Engineers
Three Park Avenue, New York, NY 10016-5990

Copyright © 2011 by
THE AMERICAN SOCIETY OF MECHANICAL ENGINEERS
All rights reserved

Copyright © 2011 by the American Society of Mechanical Engineers.
No reproduction may be made of this material without written consent of ASME.



CONTENTS

List of Sections	viii
Foreword	x
Statement of Policy on the Use of the Certification Mark and Code Authorization in Advertising	xii
Statement of Policy on the Use of ASME Marking to Identify Manufactured Items	xii
Submittal of Technical Inquiries to the Boiler and Pressure Vessel Committee —	
Mandatory	xiii
Personnel	xv
Summary of Changes	xxviii
List of Changes in Record Number Order	xxxi
SUBPART 1 STRESS TABLES	1
Statement of Policy on Information Provided in the Stress Tables	1
Guideline on Locating Materials in Stress Tables, and in Tables of Mechanical and Physical Properties	2
1A Section I; Section III, Classes 2 and 3; Section VIII, Division 1; and Section XII Maximum Allowable Stress Values S for Ferrous Materials	6
1B Section I; Section III, Classes 2 and 3; Section VIII, Division 1; and Section XII Maximum Allowable Stress Values S for Nonferrous Materials	150
2A Section III, Division 1, Classes 1 and MC, and Section III, Division 3, Classes TC and SC Design Stress Intensity Values S_m for Ferrous Materials	268
2B Section III, Division 1, Class 1 and Section III, Division 3, Classes TC and SC Design Stress Intensity Values S_m for Nonferrous Materials	326
3 Section III, Classes 2 and 3; Section VIII, Divisions 1 and 2; and Section XII Maximum Allowable Stress Values S for Bolting Materials	334
4 Section III, Classes 1, TC, and SC; and Section VIII, Division 2 Design Stress Intensity Values S_m for Bolting Materials	364
5A Section VIII, Division 2 Maximum Allowable Stress Values S_m for Ferrous Materials	376
5B Section VIII, Division 2 Maximum Allowable Stress Values S_m for Nonferrous Materials	434
U Tensile Strength Values S_u for Ferrous and Nonferrous Materials	460
U-2 Section VIII, Division 3 Tensile Strength Values S_u for Ferrous Materials	535
Y-1 Yield Strength Values S_y for Ferrous and Nonferrous Materials	536
Y-2 Factors for Limiting Permanent Strain in Nickel, High Nickel Alloys, and High Alloy Steels	705
SUBPART 2 PHYSICAL PROPERTIES TABLES	707
Introduction	707
TE-1 Thermal Expansion for Ferrous Materials	708
TE-2 Thermal Expansion for Aluminum Alloys	714
TE-3 Thermal Expansion for Copper Alloys	715
TE-4 Thermal Expansion for Nickel Alloys	716
TE-5 Thermal Expansion for Titanium Alloys	725



TCD	Nominal Coefficients of Thermal Conductivity (TC) and Thermal Diffusivity (TD).....	726
TM-1	Moduli of Elasticity <i>E</i> of Ferrous Materials for Given Temperatures.....	738
TM-2	Moduli of Elasticity <i>E</i> of Aluminum and Aluminum Alloys for Given Temperatures.....	740
TM-3	Moduli of Elasticity <i>E</i> of Copper and Copper Alloys for Given Temperatures.....	741
TM-4	Moduli of Elasticity <i>E</i> of High Nickel Alloys for Given Temperatures.....	742
TM-5	Moduli of Elasticity <i>E</i> of Titanium and Zirconium for Given Temperatures.....	743
PRD	Poisson's Ratio and Density of Materials.....	744

SUBPART 3 CHARTS AND TABLES FOR DETERMINING SHELL THICKNESS OF COMPONENTS UNDER EXTERNAL PRESSURE..... 747

Figures

G	Geometric Chart for Components Under External or Compressive Loadings (for All Materials).....	748
CS-1	Carbon or Low Alloy Steels With Specified Minimum Yield Strength Less Than 30,000 psi.....	750
CS-2	Carbon or Low Alloy Steels With Specified Minimum Yield Strength 30,000 psi and Higher.....	750
CS-3	Carbon Steel and Low Alloy Steels With Specified Minimum Yield Strength 38,000 psi and Higher for Temperatures 300°F and Less.....	751
CS-4	SA-537 Thickness 2½ in. and Less.....	751
CS-5	SA-508 Class 1, Grades 2 and 3; SA-508 Class 2, Grade 2; SA-533 Class 1, Grades A, B, C, and D; SA-533 Class 2, Grades A, B, C, and D; or SA-541 Grades 2 and 3.....	752
CS-6	Carbon Steel With Specified Minimum Yield Strength of 20,000 psi.....	752
HT-1	Quenched and Tempered Low Alloy Steel With Specified Minimum Yield Strength of 100,000 psi and Thickness 2½ in. and Less.....	753
HT-2	SA-508 Grade 4N, Class 2 or SA-543 Types B and C, Class 2 With Specified Minimum Yield Strength of 100,000 psi.....	753
HA-1	Austenitic Steel 18Cr–8Ni, Type 304.....	754
HA-2	Austenitic Steel 16Cr–12Ni–2Mo, Type 316.....	754
HA-3	Austenitic Steel 18Cr–8Ni–0.035 Maximum Carbon, Type 304L.....	755
HA-4	Austenitic Steel 18Cr–8Ni–Mo–0.035 Maximum Carbon, Type 316L.....	755
HA-5	Austenitic–Ferritic Steel 18Cr–5Ni–3Mo S31500.....	756
HA-6	Austenitic Steel 21Cr–11Ni–N S30815.....	756
HA-7	SA-564 Type 630 H1150 (17Cr–4Ni–4Cu S17400).....	757
HA-8	Austenitic–Ferritic Steel 25Cr–7Ni–3Mo–2W–0.28N S39274.....	758
CI-1	Cast Iron.....	758
CD-1	Cast Ductile Iron With a Specified Minimum Yield Strength of 40,000 psi.....	759
NFA-1	Aluminum Alloy 3003 in O Temper.....	759
NFA-2	Aluminum Alloy 3003 in H14 Temper.....	760
NFA-3	Aluminum Alloy 3004 in O Temper.....	761
NFA-4	Aluminum Alloy 3004 in H34 Temper.....	762
NFA-5	Aluminum Alloy 5154 in O Temper.....	763
NFA-6	Aluminum Alloy 5454 in O Temper.....	763
NFA-7	Aluminum Alloy 1060 in O Temper.....	764
NFA-8	Aluminum Alloy 5052 in O Temper.....	764
NFA-9	Aluminum Alloy 5086 in O Temper.....	765
NFA-10	Aluminum Alloy 5456 in O Temper.....	765
NFA-11	Aluminum Alloy 5083 in O Temper.....	766
NFA-12	Welded Aluminum Alloy 6061-T6.....	766
NFA-13	Welded Aluminum Alloy 6061-T4.....	767
NFC-1	Annealed Copper, Type DHP.....	767



NFC-2	Copper–Silicon Alloys A and C	768
NFC-3	Annealed 90–10 Copper–Nickel Alloy	768
NFC-4	Annealed 70–30 Copper–Nickel Alloy	769
NFC-5	Welded Copper–Iron Alloy Tube C19400 (SB-543 Welded)	769
NFC-6	SB-75 and SB-111 Light Drawn Seamless Copper Tubes, Alloys C10200, C12000, C12200, and C14200	770
NFC-7	Annealed Copper, SB-75, UNS C12200, Temper O50	770
NFC-8	Aluminum Bronze Alloy C61400	771
NFN-1	Annealed Low Carbon Nickel N02201	771
NFN-2	Annealed Nickel N02200	772
NFN-3	Annealed Nickel–Copper Alloy N04400	772
NFN-4	Annealed Nickel–Chromium–Iron Alloy N06600	773
NFN-5	Nickel–Molybdenum Alloy N10001	773
NFN-6	Nickel–Molybdenum–Chromium–Iron Alloy N10003	774
NFN-7	Nickel–Iron–Chromium–Molybdenum–Copper Alloy N08825	774
NFN-8	Annealed Nickel–Iron–Chromium Alloy N08800	775
NFN-9	Annealed Nickel–Iron–Chromium Alloy N08810	775
NFN-10	Low Carbon Nickel–Molybdenum–Chromium Alloy N10276	776
NFN-11	Solution Treated Nickel–Chromium–Iron–Molybdenum–Copper Alloy N06007	776
NFN-12	Chromium–Nickel–Iron–Molybdenum–Copper–Columbium Alloy N08020	777
NFN-13	Nickel–Iron–Chromium–Silicon Alloy N08330	777
NFN-14	Nickel–Chromium–Molybdenum Alloy N06455	778
NFN-15	Nickel–Molybdenum Alloy N06002	778
NFN-16	Nickel–Molybdenum Alloy N10665	779
NFN-17	Annealed Nickel–Chromium–Molybdenum–Columbium Alloy N06625 (SB-443, SB-444, and SB-446)	779
NFN-18	Nickel–Molybdenum–Chromium–Iron–Copper Alloy N06985 Having a Minimum Yield Strength of 35 ksi	780
NFN-19	Nickel–Molybdenum–Chromium–Iron–Copper Alloy N06985 Having a Minimum Yield Strength of 30 ksi	780
NFN-20	Work-Hardened Nickel	781
NFN-21	Nickel–Chromium–Iron Alloy N06600 (Specified Minimum Yield Strength 40,000 psi)	781
NFN-22	Solution Annealed Ni–Cr–Mo–Cb Alloy, Grade 2 N06625	782
NFN-23	Cold Worked Nickel–Iron–Chromium Alloy N08800	782
NFN-24	Nickel Alloy N06230	783
NFN-25	Stress Relieved Nickel Alloy N02200	783
NFN-26	Alloy S31277	784
NFN-27	Alloy N06035	784
NFT-1	Unalloyed Titanium Grade 3 (UNS R50550)	785
NFT-2	Unalloyed Titanium Grade 2 (UNS R50400)	785
NFT-3	Titanium Grade 1 (UNS R50250)	786
NFT-4	Titanium Grade 9 Alloy (UNS R56320)	786
NFT-5	Titanium Grade 12 Alloy (UNS R53400)	787
NFZ-1	Zirconium Alloy (UNS R60702)	788
NFZ-2	Zirconium Alloy (UNS R60705)	789

Tables

G	Tabular Values for Fig. G	791
CS-1	Tabular Values for Fig. CS-1	793
CS-2	Tabular Values for Fig. CS-2	794
CS-3	Tabular Values for Fig. CS-3	794
CS-4	Tabular Values for Fig. CS-4	795
CS-5	Tabular Values for Fig. CS-5	795



CS-6	Tabular Values for Fig. CS-6	796
HT-1	Tabular Values for Fig. HT-1	796
HT-2	Tabular Values for Fig. HT-2	797
HA-1	Tabular Values for Fig. HA-1	797
HA-2	Tabular Values for Fig. HA-2	798
HA-3	Tabular Values for Fig. HA-3	798
HA-4	Tabular Values for Fig. HA-4	799
HA-5	Tabular Values for Fig. HA-5	799
HA-6	Tabular Values for Fig. HA-6	800
HA-7	Tabular Values for Fig. HA-7	801
HA-8	Tabular Values for Fig. HA-8	801
CI-1	Tabular Values for Fig. CI-1	802
CD-1	Tabular Values for Fig. CD-1	802
NFA-1	Tabular Values for Fig. NFA-1	803
NFA-2	Tabular Values for Fig. NFA-2	804
NFA-3	Tabular Values for Fig. NFA-3	805
NFA-4	Tabular Values for Fig. NFA-4	806
NFA-5	Tabular Values for Fig. NFA-5	806
NFA-6	Tabular Values for Fig. NFA-6	807
NFA-7	Tabular Values for Fig. NFA-7	807
NFA-8	Tabular Values for Fig. NFA-8	808
NFA-9	Tabular Values for Fig. NFA-9	808
NFA-10	Tabular Values for Fig. NFA-10	809
NFA-11	Tabular Values for Fig. NFA-11	809
NFA-12	Tabular Values for Fig. NFA-12	810
NFA-13	Tabular Values for Fig. NFA-13	810
NFC-1	Tabular Values for Fig. NFC-1	811
NFC-2	Tabular Values for Fig. NFC-2	811
NFC-3	Tabular Values for Fig. NFC-3	812
NFC-4	Tabular Values for Fig. NFC-4	813
NFC-5	Tabular Values for Fig. NFC-5	813
NFC-6	Tabular Values for Fig. NFC-6	814
NFC-7	Tabular Values for Fig. NFC-7	814
NFC-8	Tabular Values for Fig. NFC-8	815
NFN-1	Tabular Values for Fig. NFN-1	815
NFN-2	Tabular Values for Fig. NFN-2	816
NFN-3	Tabular Values for Fig. NFN-3	817
NFN-4	Tabular Values for Fig. NFN-4	818
NFN-5	Tabular Values for Fig. NFN-5	818
NFN-6	Tabular Values for Fig. NFN-6	819
NFN-7	Tabular Values for Fig. NFN-7	819
NFN-8	Tabular Values for Fig. NFN-8	820
NFN-9	Tabular Values for Fig. NFN-9	821
NFN-10	Tabular Values for Fig. NFN-10	822
NFN-11	Tabular Values for Fig. NFN-11	822
NFN-12	Tabular Values for Fig. NFN-12	823
NFN-13	Tabular Values for Fig. NFN-13	823
NFN-14	Tabular Values for Fig. NFN-14	824
NFN-15	Tabular Values for Fig. NFN-15	825
NFN-16	Tabular Values for Fig. NFN-16	826
NFN-17	Tabular Values for Fig. NFN-17	827
NFN-18	Tabular Values for Fig. NFN-18	828
NFN-19	Tabular Values for Fig. NFN-19	829
NFN-20	Tabular Values for Fig. NFN-20	830



NFN-22	Tabular Values for Fig. NFN-22	830
NFN-23	Tabular Values for Fig. NFN-23	831
NFN-24	Tabular Values for Fig. NFN-24	832
NFN-25	Tabular Values for Fig. NFN-25	833
NFN-26	Tabular Values for Fig. NFN-26	833
NFN-27	Tabular Values for Fig. NFN-27	834
NFT-1	Tabular Values for Fig. NFT-1.....	835
NFT-2	Tabular Values for Fig. NFT-2.....	836
NFT-3	Tabular Values for Fig. NFT-3.....	836
NFT-4	Tabular Values for Fig. NFT-4.....	837
NFT-5	Tabular Values for Fig. NFT-5.....	838
NFZ-1	Tabular Values for Fig. NFZ-1.....	839
NFZ-2	Tabular Values for Fig. NFZ-2.....	839

MANDATORY APPENDICES

1	Basis for Establishing Stress Values in Tables 1A and 1B	841
2	Basis for Establishing Design Stress Intensity Values for Tables 2A, 2B, and 4, and Allowable Stress Values for Table 3	844
3	Basis for Establishing External Pressure Charts	847
4	Submittal of Technical Inquiries to the Boiler and Pressure Vessel Committee.....	852
5	Guideline on the Approval of New Materials Under the ASME Boiler and Pressure Vessel Code	853
7	Guidelines on Multiple Marking of Materials.....	857
9	Standard Units for Use in Equations.....	859
10	Basis for Establishing Maximum Allowable Stress Values for Tables 5A and 5B	860

NONMANDATORY APPENDICES

A	Metallurgical Phenomena.....	862
C	Guidance for the Use of U.S. Customary and SI Units in the ASME Boiler and Pressure Vessel Code	871



2010 ASME

BOILER AND PRESSURE VESSEL CODE

SECTIONS

- I Rules for Construction of Power Boilers
- II Materials
 - Part A — Ferrous Material Specifications
 - Part B — Nonferrous Material Specifications
 - Part C — Specifications for Welding Rods, Electrodes, and Filler Metals
 - Part D — Properties (Customary)
 - Part D — Properties (Metric)
- III Rules for Construction of Nuclear Facility Components
 - Subsection NCA — General Requirements for Division 1 and Division 2
 - Division 1
 - Subsection NB — Class 1 Components
 - Subsection NC — Class 2 Components
 - Subsection ND — Class 3 Components
 - Subsection NE — Class MC Components
 - Subsection NF — Supports
 - Subsection NG — Core Support Structures
 - Subsection NH — Class 1 Components in Elevated Temperature Service
 - Appendices
 - Division 2 — Code for Concrete Containments
 - Division 3 — Containments for Transportation and Storage of Spent Nuclear Fuel and High Level Radioactive Material and Waste
- IV Rules for Construction of Heating Boilers
- V Nondestructive Examination
- VI Recommended Rules for the Care and Operation of Heating Boilers
- VII Recommended Guidelines for the Care of Power Boilers
- VIII Rules for Construction of Pressure Vessels
 - Division 1
 - Division 2 — Alternative Rules
 - Division 3 — Alternative Rules for Construction of High Pressure Vessels
- IX Welding and Brazing Qualifications
- X Fiber-Reinforced Plastic Pressure Vessels
- XI Rules for Inservice Inspection of Nuclear Power Plant Components
- XII Rules for Construction and Continued Service of Transport Tanks



ADDENDA

Addenda, which include additions and revisions to individual Sections of the Code, will be sent automatically to purchasers of the applicable Sections up to the publication of the 2013 Code. The 2010 Code is available only in the loose-leaf format; accordingly, the Addenda will be issued in the loose-leaf format.

INTERPRETATIONS

ASME issues written replies to inquiries concerning interpretation of technical aspects of the Code. The Interpretations for each individual Section will be published separately and will be included as part of the update service to that Section. Interpretations of Section III, Divisions 1 and 2, will be included with the update service to Subsection NCA.

Interpretations of the Code are posted in January and July at <http://cstools.asme.org/interpretations.cfm>.

CODE CASES

The Boiler and Pressure Vessel Committee meets regularly to consider proposed additions and revisions to the Code and to formulate Cases to clarify the intent of existing requirements or provide, when the need is urgent, rules for materials or constructions not covered by existing Code rules. Those Cases that have been adopted will appear in the appropriate 2010 Code Cases book: “Boilers and Pressure Vessels” and “Nuclear Components.” Supplements will be sent automatically to the purchasers of the Code Cases books up to the publication of the 2013 Code.



(10)
(a)

FOREWORD

The American Society of Mechanical Engineers set up a committee in 1911 for the purpose of formulating standard rules for the construction of steam boilers and other pressure vessels. This committee is now called the Boiler and Pressure Vessel Committee.

The Committee's function is to establish rules of safety, relating only to pressure integrity, governing the construction¹ of boilers, pressure vessels, transport tanks and nuclear components, and inservice inspection for pressure integrity of nuclear components and transport tanks, and to interpret these rules when questions arise regarding their intent. This Code does not address other safety issues relating to the construction of boilers, pressure vessels, transport tanks and nuclear components, and the inservice inspection of nuclear components and transport tanks. The user of the Code should refer to other pertinent codes, standards, laws, regulations, or other relevant documents. With few exceptions, the rules do not, of practical necessity, reflect the likelihood and consequences of deterioration in service related to specific service fluids or external operating environments. Recognizing this, the Committee has approved a wide variety of construction rules in this Section to allow the user or his designee to select those which will provide a pressure vessel having a margin for deterioration in service so as to give a reasonably long, safe period of usefulness. Accordingly, it is not intended that this Section be used as a design handbook; rather, engineering judgment must be employed in the selection of those sets of Code rules suitable to any specific service or need.

This Code contains mandatory requirements, specific prohibitions, and nonmandatory guidance for construction activities. The Code does not address all aspects of these activities and those aspects that are not specifically addressed should not be considered prohibited. The Code is not a handbook and cannot replace education, experience, and the use of engineering judgment. The phrase *engineering judgment* refers to technical judgments made by knowledgeable designers experienced in the application of the Code. Engineering judgments must be consistent with Code philosophy and such judgments must never be used to overrule mandatory requirements or specific prohibitions of the Code.

¹ *Construction*, as used in this Foreword, is an all-inclusive term comprising materials, design, fabrication, examination, inspection, testing, certification, and pressure relief.

The Committee recognizes that tools and techniques used for design and analysis change as technology progresses and expects engineers to use good judgment in the application of these tools. The designer is responsible for complying with Code rules and demonstrating compliance with Code equations when such equations are mandatory. The Code neither requires nor prohibits the use of computers for the design or analysis of components constructed to the requirements of the Code. However, designers and engineers using computer programs for design or analysis are cautioned that they are responsible for all technical assumptions inherent in the programs they use and they are responsible for the application of these programs to their design.

The Code does not fully address tolerances. When dimensions, sizes, or other parameters are not specified with tolerances, the values of these parameters are considered nominal and allowable tolerances or local variances may be considered acceptable when based on engineering judgment and standard practices as determined by the designer.

The Boiler and Pressure Vessel Committee deals with the care and inspection of boilers and pressure vessels in service only to the extent of providing suggested rules of good practice as an aid to owners and their inspectors.

The rules established by the Committee are not to be interpreted as approving, recommending, or endorsing any proprietary or specific design or as limiting in any way the manufacturer's freedom to choose any method of design or any form of construction that conforms to the Code rules.

The Boiler and Pressure Vessel Committee meets regularly to consider revisions of the rules, new rules as dictated by technological development, Code Cases, and requests for interpretations. Only the Boiler and Pressure Vessel Committee has the authority to provide official interpretations of this Code. Requests for revisions, new rules, Code Cases, or interpretations shall be addressed to the Secretary in writing and shall give full particulars in order to receive consideration and action (see Submittal of Technical Inquiries to the Boiler and Pressure Vessel Committee). Proposed revisions to the Code resulting from inquiries will be presented to the Standards Committees for appropriate action. The action of the Standards Committees becomes effective only after confirmation by letter ballot of the Committees and approval by ASME.

Proposed revisions to the Code approved by the Committee are submitted to the American National



Standards Institute and published at <http://cstools.asme.org/csconnect/public/index.cfm?PublicReview=Revisions> to invite comments from all interested persons. After the allotted time for public review and final approval by ASME, revisions are published in updates to the Code.

Code Cases may be used in the construction of components to be stamped with the Certification Mark beginning with the date of their approval by ASME.

After Code revisions are approved by ASME, they may be used beginning with the date of issuance. Revisions, except for revisions to material specifications in Section II, Parts A and B, become mandatory six months after such date of issuance, except for boilers or pressure vessels contracted for prior to the end of the six-month period. Revisions to material specifications are originated by the American Society for Testing and Materials (ASTM) and other recognized national or international organizations, and are usually adopted by ASME. However, those revisions may or may not have any effect on the suitability of material, produced to earlier editions of specifications, for use in ASME construction. ASME material specifications approved for use in each construction Code are listed in the Guideline for Acceptable ASTM Editions and in the Guideline for Acceptable Non-ASTM Editions, in Section II, Parts A and B. These Guidelines list, for each specification, the latest edition adopted by ASME, and earlier and later editions considered by ASME to be identical for ASME construction.

The Boiler and Pressure Vessel Committee in the formulation of its rules and in the establishment of maximum design and operating pressures considers materials, construction, method of fabrication, inspection, and safety devices.

The Code Committee does not rule on whether a component shall or shall not be constructed to the provisions of the Code. The Scope of each Section has been established to identify the components and parameters considered by the Committee in formulating the Code rules.

Questions or issues regarding compliance of a specific component with the Code rules are to be directed to the ASME Certificate Holder (Manufacturer). Inquiries concerning the interpretation of the Code are to be directed to the ASME Boiler and Pressure Vessel Committee.

ASME is to be notified should questions arise concerning improper use of the Certification Mark.

The specifications for materials given in Section II are identical with or similar to those of specifications published by ASTM, AWS, and other recognized national or international organizations. When reference is made in an ASME material specification to a non-ASME specification for which a companion ASME specification exists, the reference shall be interpreted as applying to the ASME material specification. Not all materials included in the material specifications in Section II have been adopted for Code use. Usage is limited to those materials and grades adopted by at least one of the other Sections of the Code for application under rules of that Section. All materials allowed by these various Sections and used for construction within the scope of their rules shall be furnished in accordance with material specifications contained in Section II or referenced in the Guidelines for Acceptable Editions in Section II, Parts A and B, except where otherwise provided in Code Cases or in the applicable Section of the Code. Materials covered by these specifications are acceptable for use in items covered by the Code Sections only to the degree indicated in the applicable Section. Materials for Code use should preferably be ordered, produced, and documented on this basis; Guidelines for Acceptable Editions in Section II, Parts A and B list editions of ASME and year dates of specifications that meet ASME requirements and which may be used in Code construction. Material produced to an acceptable specification with requirements different from the requirements of the corresponding specifications listed in the Guidelines for Acceptable Editions in Part A or Part B may also be used in accordance with the above, provided the material manufacturer or vessel manufacturer certifies with evidence acceptable to the Authorized Inspector that the corresponding requirements of specifications listed in the Guidelines for Acceptable Editions in Part A or Part B have been met. Material produced to an acceptable material specification is not limited as to country of origin.

When required by context in this Section, the singular shall be interpreted as the plural, and vice-versa; and the feminine, masculine, or neuter gender shall be treated as such other gender as appropriate.



(10)
(a)

STATEMENT OF POLICY ON THE USE OF THE CERTIFICATION MARK AND CODE AUTHORIZATION IN ADVERTISING

ASME has established procedures to authorize qualified organizations to perform various activities in accordance with the requirements of the ASME Boiler and Pressure Vessel Code. It is the aim of the Society to provide recognition of organizations so authorized. An organization holding authorization to perform various activities in accordance with the requirements of the Code may state this capability in its advertising literature.

Organizations that are authorized to use the Certification Mark for marking items or constructions that have been constructed and inspected in compliance with the ASME Boiler and Pressure Vessel Code are issued Certificates of Authorization. It is the aim of the Society to maintain the standing of the Certification Mark for the benefit of the users, the enforcement jurisdictions, and the holders of the Certification Mark who comply with all requirements.

Based on these objectives, the following policy has been established on the usage in advertising of facsimiles of the Certification Mark, Certificates of Authorization, and reference to Code construction. The American Society of

Mechanical Engineers does not “approve,” “certify,” “rate,” or “endorse” any item, construction, or activity and there shall be no statements or implications that might so indicate. An organization holding the Certification Mark and/or a Certificate of Authorization may state in advertising literature that items, constructions, or activities “are built (produced or performed) or activities conducted in accordance with the requirements of the ASME Boiler and Pressure Vessel Code,” or “meet the requirements of the ASME Boiler and Pressure Vessel Code.” An ASME corporate logo shall not be used by any organization other than ASME.

The Certification Mark shall be used only for stamping and nameplates as specifically provided in the Code. However, facsimiles may be used for the purpose of fostering the use of such construction. Such usage may be by an association or a society, or by a holder of the Certification Mark who may also use the facsimile in advertising to show that clearly specified items will carry the Certification Mark. General usage is permitted only when all of a manufacturer’s items are constructed under the rules.

(a)

STATEMENT OF POLICY ON THE USE OF ASME MARKING TO IDENTIFY MANUFACTURED ITEMS

The ASME Boiler and Pressure Vessel Code provides rules for the construction of boilers, pressure vessels, and nuclear components. This includes requirements for materials, design, fabrication, examination, inspection, and stamping. Items constructed in accordance with all of the applicable rules of the Code are identified with the official Certification Mark described in the governing Section of the Code.

Markings such as “ASME,” “ASME Standard,” or any other marking including “ASME” or the Certification Mark

shall not be used on any item that is not constructed in accordance with all of the applicable requirements of the Code.

Items shall not be described on ASME Data Report Forms nor on similar forms referring to ASME that tend to imply that all Code requirements have been met when, in fact, they have not been. Data Report Forms covering items not fully complying with ASME requirements should not refer to ASME or they should clearly identify all exceptions to the ASME requirements.



SUBMITTAL OF TECHNICAL INQUIRIES TO THE BOILER AND PRESSURE VESSEL COMMITTEE — MANDATORY

(a)

1 INTRODUCTION

(a) The following information provides guidance to Code users for submitting technical inquiries to the Committee. See Guideline on the Approval of New Materials Under the ASME Boiler and Pressure Vessel Code in Section II, Parts C and D for additional requirements for requests involving adding new materials to the Code. Technical inquiries include requests for revisions or additions to the Code rules, requests for Code Cases, and requests for Code interpretations, as described below.

(1) *Code Revisions.* Code revisions are considered to accommodate technological developments, address administrative requirements, incorporate Code Cases, or to clarify Code intent.

(2) *Code Cases.* Code Cases represent alternatives or additions to existing Code rules. Code Cases are written as a question and reply, and are usually intended to be incorporated into the Code at a later date. When used, Code Cases prescribe mandatory requirements in the same sense as the text of the Code. However, users are cautioned that not all jurisdictions or owners automatically accept Code Cases. The most common applications for Code Cases are:

(a) to permit early implementation of an approved Code revision based on an urgent need

(b) to permit the use of a new material for Code construction

(c) to gain experience with new materials or alternative rules prior to incorporation directly into the Code

(3) *Code Interpretations.* Code Interpretations provide clarification of the meaning of existing rules in the Code, and are also presented in question and reply format. Interpretations do not introduce new requirements. In cases where existing Code text does not fully convey the meaning that was intended, and revision of the rules is required to support an interpretation, an Intent Interpretation will be issued and the Code will be revised.

(b) The Code rules, Code Cases, and Code Interpretations established by the Committee are not to be considered as approving, recommending, certifying, or endorsing any proprietary or specific design, or as limiting

in any way the freedom of manufacturers, constructors, or owners to choose any method of design or any form of construction that conforms to the Code rules.

(c) Inquiries that do not comply with these provisions or that do not provide sufficient information for the Committee's full understanding may result in the request being returned to the inquirer with no action.

2 INQUIRY FORMAT

Submittals to the Committee shall include:

(a) *Purpose.* Specify one of the following:

(1) revision of present Code rules

(2) new or additional Code rules

(3) Code Case

(4) Code Interpretation

(b) *Background.* Provide the information needed for the Committee's understanding of the inquiry, being sure to include reference to the applicable Code Section, Division, Edition, Addenda (if applicable), paragraphs, figures, and tables. Preferably, provide a copy of the specific referenced portions of the Code.

(c) *Presentations.* The inquirer may desire or be asked to attend a meeting of the Committee to make a formal presentation or to answer questions from the Committee members with regard to the inquiry. Attendance at a Committee meeting shall be at the expense of the inquirer. The inquirer's attendance or lack of attendance at a meeting shall not be a basis for acceptance or rejection of the inquiry by the Committee.

3 CODE REVISIONS OR ADDITIONS

Requests for Code revisions or additions shall provide the following:

(a) *Proposed Revisions or Additions.* For revisions, identify the rules of the Code that require revision and submit a copy of the appropriate rules as they appear in the Code, marked up with the proposed revision. For additions, provide the recommended wording referenced to the existing Code rules.



(b) *Statement of Need*. Provide a brief explanation of the need for the revision or addition.

(c) *Background Information*. Provide background information to support the revision or addition, including any data or changes in technology that form the basis for the request that will allow the Committee to adequately evaluate the proposed revision or addition. Sketches, tables, figures, and graphs should be submitted as appropriate. When applicable, identify any pertinent paragraph in the Code that would be affected by the revision or addition and identify paragraphs in the Code that reference the paragraphs that are to be revised or added.

4 CODE CASES

Requests for Code Cases shall provide a Statement of Need and Background Information similar to that defined in 3(b) and 3(c), respectively, for Code revisions or additions. The urgency of the Code Case (e.g., project underway or imminent, new procedure, etc.) must be defined and it must be confirmed that the request is in connection with equipment that will bear the Certification Mark, with the exception of Section XI applications. The proposed Code Case should identify the Code Section and Division, and be written as a *Question* and a *Reply* in the same format as existing Code Cases. Requests for Code Cases should also indicate the applicable Code Editions and Addenda (if applicable) to which the proposed Code Case applies.

5 CODE INTERPRETATIONS

(a) Requests for Code Interpretations shall provide the following:

(1) *Inquiry*. Provide a condensed and precise question, omitting superfluous background information and, when possible, composed in such a way that a “yes” or a “no” *Reply*, with brief provisos if needed, is acceptable. The question should be technically and editorially correct.

(2) *Reply*. Provide a proposed *Reply* that will clearly and concisely answer the *Inquiry* question. Preferably, the

Reply should be “yes” or “no,” with brief provisos if needed.

(3) *Background Information*. Provide any background information that will assist the Committee in understanding the proposed *Inquiry* and *Reply*.

(b) Requests for Code Interpretations must be limited to an interpretation of a particular requirement in the Code or a Code Case. The Committee cannot consider consulting type requests such as the following:

(1) a review of calculations, design drawings, welding qualifications, or descriptions of equipment or parts to determine compliance with Code requirements;

(2) a request for assistance in performing any Code-prescribed functions relating to, but not limited to, material selection, designs, calculations, fabrication, inspection, pressure testing, or installation;

(3) a request seeking the rationale for Code requirements.

6 SUBMITTALS

Submittals to and responses from the Committee shall meet the following:

(a) *Submittal*. Inquiries from Code users shall be in English and preferably be submitted in typewritten form; however, legible handwritten inquiries will also be considered. They shall include the name, address, telephone number, fax number, and e-mail address, if available, of the inquirer and be mailed to the following address:

Secretary
ASME Boiler and Pressure Vessel Committee
Three Park Avenue
New York, NY 10016-5990

As an alternative, inquiries may be submitted via e-mail to: SecretaryBPV@asme.org.

(b) *Response*. The Secretary of the ASME Boiler and Pressure Vessel Committee or of the appropriate Subcommittee shall acknowledge receipt of each properly prepared inquiry and shall provide a written response to the inquirer upon completion of the requested action by the Code Committee.



PERSONNEL

ASME Boiler and Pressure Vessel Standards Committees, Subgroups, and Working Groups

As of January 1, 2011

TECHNICAL OVERSIGHT MANAGEMENT COMMITTEE (TOMC)

J. G. Feldstein, <i>Chair</i>	T. E. Hansen
T. P. Pastor, <i>Vice Chair</i>	J. F. Henry
J. S. Brzuszkiewicz, <i>Staff Secretary</i>	C. L. Hoffmann
R. W. Barnes	G. G. Karcher
R. J. Basile	W. M. Lundy
J. E. Batey	J. R. MacKay
T. L. Bedeaux	U. R. Miller
D. L. Berger	W. E. Norris
M. N. Bressler	G. C. Park
D. A. Canonico	M. D. Rana
A. Chaudouet	B. W. Roberts
R. P. Deubler	S. C. Roberts
D. A. Douin	F. J. Schaaf, Jr.
D. Eisberg	A. Selz
R. E. Gimple	B. F. Shelley
M. Gold	W. J. Sperko
	R. W. Swayne

HONORARY MEMBERS (MAIN COMMITTEE)

F. P. Barton	M. H. Jawad
L. J. Chockie	A. J. Justin
T. M. Cullen	W. G. Knecht
W. D. Doty	J. LeCoff
J. R. Farr	T. G. McCarty
G. E. Feigel	G. C. Millman
R. C. Griffin	R. A. Moen
O. F. Hedden	R. F. Reedy
E. J. Hemzy	K. K. Tam

ADMINISTRATIVE COMMITTEE

J. G. Feldstein, <i>Chair</i>	J. F. Henry
J. S. Brzuszkiewicz, <i>Staff Secretary</i>	U. R. Miller
R. W. Barnes	G. C. Park
J. E. Batey	M. D. Rana
T. L. Bedeaux	B. F. Shelley
D. L. Berger	W. J. Sperko

MARINE CONFERENCE GROUP

H. N. Patel, <i>Chair</i>	J. G. Hungerbuhler, Jr.
J. S. Brzuszkiewicz, <i>Staff Secretary</i>	G. Pallichadath
	J. D. Reynolds

CONFERENCE COMMITTEE

J. M. Given, Jr. — North Carolina (<i>Chair</i>)	M. R. Klosterman — Iowa
J. T. Amato — Minnesota (<i>Vice Chair</i>)	M. Kotb — Quebec, Canada
D. A. Douin — Ohio (<i>Secretary</i>)	K. J. Kraft — Maryland
B. P. Anthony — Rhode Island	B. L. Krasium — Saskatchewan, Canada
R. D. Austin — Arizona	K. T. Lau — Alberta, Canada
B. F. Bailey — Illinois	W. McGivney — New York
J. E. Bell — Michigan	T. J. Monroe — Oklahoma
W. K. Brigham — New Hampshire	S. V. Nelson — Colorado
C. W. Bryan — Tennessee	W. R. Owens — Louisiana
M. A. Burns — Florida	R. P. Pate — Alabama
J. H. Burpee — Maine	R. L. Perry — Nevada
C. B. Cantrell — Nebraska	H. D. Pfaff — South Dakota
D. C. Cook — California	J. F. Porcella — West Virginia
E. L. Creaser — New Brunswick, Canada	R. S. Pucek — Wisconsin
W. E. Crider, Jr. — Vermont	R. D. Reetz — North Dakota
P. L. Dodge — Nova Scotia, Canada	C. F. Reyes — California
S. Donovan — Northwest Territories, Canada	T. W. Rieger — Manitoba, Canada
D. Eastman — Newfoundland and Labrador, Canada	K. A. Rudolph — Hawaii
C. Fulton — Alaska	M. J. Ryan — Illinois
M. Graham — Oregon	T. S. Scholl — Ontario, Canada
R. J. Handy — Kentucky	G. Scribner — Missouri
D. R. Hannon — Arkansas	R. Spiker — North Carolina
E. G. Hilton — Virginia	T. Stewart — Montana
K. Hynes — Prince Edward Island, Canada	R. K. Sturm — Utah
D. T. Jagger — Ohio	W. Vallance — Michigan
D. J. Jenkins — Kansas	M. J. Verhagen — Wisconsin
E. S. Kawa, Jr. — Massachusetts	P. L. Vescio, Jr. — New York
	M. Washington — New Jersey
	K. L. Watson — Mississippi
	P. J. Welch — Georgia
	L. Williamson — Washington
	D. J. Willis — Indiana

INTERNATIONAL INTEREST REVIEW GROUP

V. Felix	C. Minu
Y.-G. Kim	Y.-W. Park
S. H. Leong	R. Reynaga
W. Lin	P. Williamson
O. F. Manafa	



PROJECT TEAM ON HYDROGEN TANKS

M. D. Rana, *Chair*
A. P. Amato, *Staff Secretary*
F. L. Brown
D. A. Canonico
D. C. Cook
J. Coursen
J. W. Felbaum
B. D. Hawkes
N. L. Newhouse
K. Nibur
A. S. Olivares
G. B. Rawls, Jr.
B. F. Shelley
J. R. Sims, Jr.
N. Sirosh
J. H. Smith
S. Staniszewski
R. Subramanian
T. Tahara
D. W. Treadwell
E. Upitis
Y. Wada

C. T. I. Webster
R. C. Biel, *Contributing Member*
J. Birdsall, *Contributing Member*
M. Duncan, *Contributing Member*
D. R. Frikken, *Contributing Member*
L. E. Hayden, Jr., *Contributing Member*
K. T. Lau, *Contributing Member*
K. Oyamada, *Contributing Member*
C. H. Rivkin, *Contributing Member*
C. San Marchi, *Contributing Member*
B. Somerday, *Contributing Member*

COMMITTEE ON POWER BOILERS (BPV I)

D. L. Berger, *Chair*
R. E. McLaughlin, *Vice Chair*
U. D'Urso, *Staff Secretary*
J. L. Arnold
S. W. Cameron
D. A. Canonico
K. K. Coleman
P. D. Edwards
P. Fallouey
J. G. Feldstein
G. W. Galanes
T. E. Hansen
J. F. Henry
J. S. Hunter
W. L. Lowry
J. R. MacKay
F. Massi

T. C. McGough
P. A. Molvie
Y. Oishi
J. T. Pillow
B. W. Roberts
R. D. Schueler, Jr.
J. P. Swezy, Jr.
J. M. Tanzosh
R. V. Wielgoszinski
D. J. Willis
G. Ardizzoia, *Delegate*
H. Michael, *Delegate*
E. M. Ortman, *Alternate*
D. N. French, *Honorary Member*
R. L. Williams, *Honorary Member*

Subgroup on Design (BPV I)

P. A. Molvie, *Chair*
J. Vattappilly, *Secretary*
D. I. Anderson
P. Dhorajia
J. P. Gaspie
G. B. Komora
J. C. Light
B. W. Moore

R. D. Schueler, Jr.
J. P. Swezy, Jr.
S. V. Torkildson
M. Wadkinson
G. Ardizzoia, *Delegate*
C. F. Jeerings, *Contributing Member*

Subgroup on Fabrication and Examination (BPV I)

J. T. Pillow, *Chair*
G. W. Galanes, *Secretary*
J. L. Arnold
D. L. Berger
S. W. Cameron
G. Dunker
P. F. Gilston
J. Hainsworth

T. E. Hansen
C. T. McDaris
T. C. McGough
R. E. McLaughlin
R. J. Newell
Y. Oishi
J. P. Swezy, Jr.
R. V. Wielgoszinski

Subgroup on General Requirements (BPV I)

R. E. McLaughlin, *Chair*
T. E. Hansen, *Vice Chair*
F. Massi, *Secretary*
P. D. Edwards
W. L. Lowry
T. C. McGough
E. M. Ortman
J. T. Pillow

D. Tompkins
S. V. Torkildson
D. E. Tuttle
M. Wadkinson
R. V. Wielgoszinski
D. J. Willis
C. F. Jeerings, *Contributing Member*

Subgroup on Heat Recovery Steam Generators (BPV I)

T. E. Hansen, *Chair*
D. Dziubinski, *Secretary*
J. P. Bell
L. R. Douglas
J. Gertz
G. B. Komora
C. T. McDaris
B. W. Moore

Y. Oishi
E. M. Ortman
R. D. Schueler, Jr.
J. C. Steverman, Jr.
D. Tompkins
S. V. Torkildson
B. C. Turczynski

Subgroup on Locomotive Boilers (BPV I)

L. Moedinger, *Chair*
S. M. Butler, *Secretary*
P. Boschan
J. Braun
J. D. Conrad
R. C. Franzen, Jr.
D. W. Griner
S. D. Jackson
M. A. Janssen

S. A. Lee
G. M. Ray
G. L. Scerbo
R. D. Schueler, Jr.
R. B. Stone
M. W. Westland
W. L. Withuhn
R. Yuill

Subgroup on Materials (BPV I)

B. W. Roberts, *Chair*
J. S. Hunter, *Secretary*
S. H. Bowes
D. A. Canonico
K. K. Coleman
P. Fallouey
G. W. Galanes

K. L. Hayes
J. F. Henry
O. X. Li
J. R. MacKay
F. Masuyama
D. W. Raho
J. M. Tanzosh

Subgroup on Piping (BPV I)

T. E. Hansen, *Chair*
D. Tompkins, *Secretary*
D. L. Berger
P. D. Edwards
G. W. Galanes

T. G. Kosmatka
W. L. Lowry
F. Massi
T. C. McGough
E. A. Whittle

Subgroup on Solar Boilers (BPV I)

J. S. Hunter, *Chair*
J. R. Briggs
G. W. Galanes
R. E. Hearne
P. L. Johnson
D. J. Koza

J. C. Light
Y. Magen
F. Massi
S. V. Torkildson
J. T. Trimble, Jr.



COMMITTEE ON MATERIALS (BPV II)

J. F. Henry, *Chair*
 D. W. Rahoï, *Vice Chair*
 N. Lobo, *Staff Secretary*
 F. Abe
 A. Appleton
 J. Cameron
 D. A. Canonico
 A. Chaudouet
 P. Fallouey
 J. R. Foulds
 D. W. Gandy
 M. H. Gilkey
 M. Gold
 J. F. Grubb
 J. A. Hall
 C. L. Hoffmann
 M. Katcher
 F. Masuyama
 R. K. Nanstad
 M. L. Nayyar
 B. W. Roberts
 E. Shapiro
 M. H. Skillingberg
 R. C. Sutherlin
 R. W. Swindeman
 J. M. Tanzosh

D. Tyler
 D. Kwon, *Delegate*
 O. Oldani, *Delegate*
 W. R. Apblett, Jr., *Contributing Member*
 M. N. Bressler, *Contributing Member*
 H. D. Bushfield, *Contributing Member*
 E. G. Nisbett, *Contributing Member*
 E. Uptis, *Contributing Member*
 T. M. Cullen, *Honorary Member*
 W. D. Doty, *Honorary Member*
 W. D. Edsall, *Honorary Member*
 G. C. Hsu, *Honorary Member*
 R. A. Moen, *Honorary Member*
 C. E. Spaeder, Jr., *Honorary Member*
 A. W. Zeuthen, *Honorary Member*

Subgroup on External Pressure (BPV II)

R. W. Mikitka, *Chair*
 J. A. A. Morrow, *Secretary*
 L. F. Campbell
 D. S. Griffin
 J. F. Grubb
 J. R. Harris III

M. Katcher
 D. L. Kurle
 C. R. Thomas
 C. H. Sturgeon, *Contributing Member*

Subgroup on Ferrous Specifications (BPV II)

A. Appleton, *Chair*
 R. M. Davison
 B. M. Dingman
 M. J. Dossourian
 P. Fallouey
 T. Graham
 J. M. Grocki
 J. F. Grubb
 K. M. Hottle
 D. S. Janikowski
 D. C. Krouse

L. J. Lavezzi
 W. C. Mack
 J. K. Mahaney
 R. J. Marciniac
 A. S. Melilli
 E. G. Nisbett
 K. E. Orie
 J. Shick
 E. Uptis
 R. Zawierucha

Subgroup on International Material Specifications (BPV II)

A. Chaudouet, *Chair*
 D. Dziubinski, *Secretary*
 S. W. Cameron
 D. A. Canonico
 P. Fallouey
 A. F. Garbolevsky
 D. O. Henry
 M. Ishikawa
 O. X. Li

W. M. Lundy
 T. F. Miskell
 A. R. Nywening
 R. D. Schueler, Jr.
 E. Uptis
 D. Kwon, *Delegate*
 O. Oldani, *Delegate*
 H. Lorenz, *Contributing Member*

Subgroup on Nonferrous Alloys (BPV II)

M. Katcher, *Chair*
 R. C. Sutherlin, *Secretary*
 W. R. Apblett, Jr.
 M. H. Gilkey
 J. F. Grubb
 A. Heino
 J. Kissell
 T. M. Malota
 S. Matsumoto

H. Matsuo
 J. A. McMaster
 D. W. Rahoï
 E. Shapiro
 M. H. Skillingberg
 D. Tyler
 R. Zawierucha
 H. D. Bushfield, *Contributing Member*

Subgroup on Physical Properties (BPV II)

J. F. Grubb, *Chair*
 H. D. Bushfield

P. Fallouey
 E. Shapiro

Subgroup on Strength, Ferrous Alloys (BPV II)

C. L. Hoffmann, *Chair*
 J. M. Tanzosh, *Secretary*
 F. Abe
 W. R. Apblett, Jr.
 D. A. Canonico
 A. Di Rienzo
 P. Fallouey
 J. R. Foulds
 M. Gold
 J. A. Hall
 J. F. Henry
 K. Kimura

F. Masuyama
 S. Matsumoto
 D. W. Rahoï
 B. W. Roberts
 M. S. Shelton
 J. P. Shingledecker
 M. J. Slater
 R. W. Swindeman
 T. P. Vassallo, Jr.
 H. Murakami, *Contributing Member*

Subgroup on Strength of Weldments (BPV II & BPV IX)

J. M. Tanzosh, *Chair*
 W. F. Newell, Jr., *Secretary*
 S. H. Bowes
 K. K. Coleman
 P. D. Flenner
 J. R. Foulds
 D. W. Gandy
 M. Gold

K. L. Hayes
 J. F. Henry
 D. W. Rahoï
 B. W. Roberts
 J. P. Shingledecker
 W. J. Sperko
 J. P. Swezy, Jr.

Special Working Group on Nonmetallic Materials (BPV II)

C. W. Rowley, *Chair*
 W. I. Adams
 F. L. Brown
 A. Crabtree
 S. R. Frost

M. Golliet
 P. S. Hill
 M. R. Kessler
 E. Lever
 F. Worth



COMMITTEE ON CONSTRUCTION OF NUCLEAR FACILITY COMPONENTS (BPV III)

R. W. Barnes, <i>Chair</i>	K. R. Wichman
J. R. Cole, <i>Vice Chair</i>	C. S. Withers
M. L. Vazquez, <i>Staff Secretary</i>	Y. H. Choi, <i>Delegate</i>
W. H. Borter	T. Ius, <i>Delegate</i>
M. N. Bressler	H.-T. Wang, <i>Delegate</i>
T. D. Burchell	C. C. Kim, <i>Contributing Member</i>
R. P. Deubler	E. B. Branch, <i>Honorary Member</i>
A. C. Eberhardt	P. Chilukuri, <i>Honorary Member</i>
B. A. Erler	G. D. Cooper, <i>Honorary Member</i>
G. M. Foster	W. D. Doty, <i>Honorary Member</i>
R. S. Hill III	D. F. Landers, <i>Honorary Member</i>
C. L. Hoffmann	R. A. Moen, <i>Honorary Member</i>
R. M. Jessee	C. J. Pieper, <i>Honorary Member</i>
V. Kostarev	
W. C. LaRoche	
K. A. Manoly	
W. N. McLean	
M. N. Mitchell	
D. K. Morton	
R. F. Reedy	
J. D. Stevenson	

Subgroup on Containment Systems for Spent Fuel and High-Level Waste Transport Packagings (BPV III)

G. M. Foster, <i>Chair</i>	C. G. May
G. J. Solovey, <i>Vice Chair</i>	P. E. McConnell
D. K. Morton, <i>Secretary</i>	I. D. McInnes
D. J. Ammerman	A. B. Meichler
W. G. Beach	R. E. Nickell
G. Bjorkman	E. L. Pleins
W. H. Borter	T. Saegusa
G. R. Cannell	H. P. Shrivastava
J. L. Gorczyca	N. M. Simpson
R. S. Hill III	R. H. Smith
S. Horowitz	J. D. Stevenson
D. W. Lewis	C. J. Temus

Subgroup on Component Design (BPV III)

R. S. Hill III, <i>Chair</i>	R. J. Masterson
T. M. Adams, <i>Vice Chair</i>	D. E. Matthews
A. N. Nguyen, <i>Secretary</i>	W. N. McLean
S. Asada	J. C. Minichiello
C. W. Bruny	T. Nagata
J. R. Cole	E. L. Pleins
R. E. Cornman, Jr.	I. Saito
A. A. Dermenjian	G. C. Slagis
R. P. Deubler	J. D. Stevenson
P. Hirschberg	J. P. Tucker
R. I. Jetter	K. R. Wichman
R. B. Keating	J. Yang
H. Kobayashi	T. Ius, <i>Delegate</i>
D. F. Landers	M. N. Bressler, <i>Contributing Member</i>
K. A. Manoly	

Working Group on Supports (SG-D) (BPV III)

R. J. Masterson, <i>Chair</i>	A. N. Nguyen
F. J. Birch, <i>Secretary</i>	I. Saito
K. Avrithi	J. R. Stinson
T. H. Baker	T. G. Terryah
U. S. Bandyopadhyay	G. Z. Tokarski
R. P. Deubler	C.-I. Wu
W. P. Golini	

Working Group on Core Support Structures (SG-D) (BPV III)

J. Yang, <i>Chair</i>	A. Tsirigotis
J. F. Kielb, <i>Secretary</i>	J. T. Land, <i>Contributing Member</i>
F. G. Al-Chammas	
H. S. Mehta	

Working Group on Design Methodology (SG-D) (BPV III)

R. B. Keating, <i>Chair</i>	D. H. Roarty
S. D. Snow, <i>Secretary</i>	E. A. Rodriguez
K. Avrithi	J. D. Stevenson
M. Basol	A. Tsirigotis
R. D. Blevins	T. M. Wiger
D. L. Caldwell	J. Yang
H. T. Harrison III	D. F. Landers, <i>Corresponding Member</i>
P. Hirschberg	M. K. Au-Yang, <i>Contributing Member</i>
H. Kobayashi	W. S. Lapay, <i>Contributing Member</i>
H. Lockert	
J. F. McCabe	
A. N. Nguyen	

Working Group on Design of Division 3 Containments (SG-D) (BPV III)

E. L. Pleins, <i>Chair</i>	H. P. Shrivastava
D. J. Ammerman	C. J. Temus
G. Bjorkman	I. D. McInnes, <i>Contributing Member</i>
S. Horowitz	R. E. Nickell, <i>Contributing Member</i>
D. W. Lewis	
J. C. Minichiello	
D. K. Morton	

Working Group on Piping (SG-D) (BPV III)

P. Hirschberg, <i>Chair</i>	I. K. Nam
G. Z. Tokarski, <i>Secretary</i>	E. R. Nelson
T. M. Adams	A. N. Nguyen
G. A. Antaki	N. J. Shah
C. Basavaraju	M. S. Sills
J. Catalano	G. C. Slagis
F. Claeys	N. C. Sutherland
J. R. Cole	E. A. Wais
M. A. Gray	C.-I. Wu
R. W. Haupt	D. F. Landers, <i>Corresponding Member</i>
J. Kawahata	R. D. Patel, <i>Contributing Member</i>
R. B. Keating	E. C. Rodabaugh, <i>Honorary Member</i>
V. Kostarev	
Y. Liu	
J. F. McCabe	
J. C. Minichiello	

Working Group on Probabilistic Methods in Design (SG-D) (BPV III)

R. S. Hill III, <i>Chair</i>	A. McNeill III
N. A. Palm, <i>Secretary</i>	M. Morishita
T. Asayama	P. J. O'Regan
K. Avrithi	I. Saito
B. M. Ayyub	M. E. Schmidt
A. A. Dermenjian	A. Tsirigotis
M. R. Graybeal	J. P. Tucker
D. O. Henry	R. M. Wilson
S. D. Kulat	



Working Group on Pumps (SG-D) (BPV III)

J. E. Cornman, Jr., <i>Chair</i>	R. A. Ladefian
P. W. Behnke	J. W. Leavitt
M. D. Eftychiou	R. A. Patrick
A. Fraser	R. Udo
R. Ghanbari	A. G. Washburn
M. Higuchi	

Working Group on Valves (SG-D) (BPV III)

J. P. Tucker, <i>Chair</i>	J. D. Page
J. O'Callaghan, <i>Secretary</i>	K. E. Reid II
G. A. Jolly	S. N. Shields
W. N. McLean	H. R. Sonderegger
T. A. McMahon	P. Vock
C. A. Mizer	

Working Group on Vessels (SG-D) (BPV III)

D. E. Matthews, <i>Chair</i>	R. B. Keating
R. M. Wilson, <i>Secretary</i>	O.-S. Kim
C. Basavaraju	K. Matsunaga
C. W. Bruny	P. K. Shah
J. V. Gregg, Jr.	C. Turylo
W. J. Heilker	D. Vlaicu
A. Kalnins	W. F. Weitze

Special Working Group on Environmental Effects (SG-D) (BPV III)

W. Z. Novak, <i>Chair</i>	C. L. Hoffmann
R. S. Hill III	Y. H. Choi, <i>Delegate</i>

Subgroup on General Requirements (BPV III & 3C)

W. C. LaRochelle, <i>Chair</i>	G. L. Hollinger
L. M. Plante, <i>Secretary</i>	R. P. McIntyre
A. Appleton	M. R. Minick
J. R. Berry	C. T. Smith
M. N. Bressler	W. K. Sowder, Jr.
J. V. Gardiner	D. M. Vickery
W. P. Golini	C. S. Withers
J. W. Highlands	H. Michael, <i>Delegate</i>

Working Group on Duties and Responsibilities (SG-GR) (BPV III)

J. V. Gardiner, <i>Chair</i>	K. A. Kavanagh
G. L. Hollinger, <i>Secretary</i>	M. A. Lockwood
J. R. Berry	L. M. Plante
Y. Diaz-Castillo	D. J. Roszman
G. Gratti	S. Scardigno
M. E. Jennings	

Working Group on Quality Assurance, Certification, and Stamping (SG-GR) (BPV III)

C. T. Smith, <i>Chair</i>	R. B. Patel
C. S. Withers, <i>Secretary</i>	E. C. Renaud
A. Appleton	S. J. Salvador
B. K. Bobo	W. K. Sowder, Jr.
S. M. Goodwin	J. F. Strunk
J. W. Highlands	M. F. Sullivan
R. P. McIntyre	G. E. Szabatura
M. R. Minick	D. M. Vickery

Subgroup on Materials, Fabrication, and Examination (BPV III)

C. L. Hoffmann, <i>Chair</i>	C. C. Kim
W. G. Beach	M. Lau
W. H. Borter	H. Murakami
G. R. Cannell	J. Ossmann
R. H. Davis	N. M. Simpson
G. M. Foster	W. J. Sperko
B. D. Frew	J. R. Stinson
G. B. Georgiev	J. F. Strunk
S. E. Gingrich	K. B. Stuckey
R. M. Jessee	H. Michael, <i>Delegate</i>

Subgroup on Pressure Relief (BPV III)

J. F. Ball, <i>Chair</i>	A. L. Szeplin
E. M. Petrosky	D. G. Thibault

Executive Committee on Strategy and Management (BPV III, Divisions 1 and 2)

J. R. Cole, <i>Chair</i>	R. M. Jessee
C. A. Sanna, <i>Staff Secretary</i>	K. A. Manoly
R. W. Barnes	D. K. Morton
B. K. Bobo	J. Ramirez
N. Broom	R. F. Reedy
B. A. Erler	C. T. Smith
C. M. Faidy	W. K. Sowder, Jr.
J. M. Helmey	Y. Urabe
R. S. Hill III	M. F. Sullivan, <i>Contributing Member</i>
E. V. Imbro	

China International Group (BPV III)

C. A. Sanna, <i>Staff Secretary</i>	J. Yan
Y. Chen	Z. Yan
G. Tang	Z. Zhong

Special Working Group for New Advanced Light Water Reactor Plant Construction Issues (BPV III)

C. A. Sanna, <i>Chair</i>	E. L. Pleins
A. Cardillo	J. A. Schulz
J. Honcharik	M. C. Scott
E. V. Imbro	R. R. Stevenson

Subgroup on Editing and Review (BPV III)

D. K. Morton, <i>Chair</i>	B. A. Erler
W. H. Borter	W. C. LaRochelle
M. N. Bressler	R. F. Reedy
R. P. Deubler	J. D. Stevenson

Subgroup on Management Resources (BPV III)

R. M. Jessee, <i>Chair</i>	J. McLean
V. Broz	B. S. Sandhu
I. I. Jeong	



Subgroup on Polyethylene Pipe (BPV III)

J. C. Minichiello, <i>Chair</i>	R. S. Hill III
T. M. Adams	P. Krishnaswamy
W. I. Adams	E. Lever
G. A. Antaki	E. W. McElroy
C. Basavaraju	D. P. Munson
S. J. Boros	T. M. Musto
D. Burwell	L. J. Petroff
A. Crabtree	C. W. Rowley
J. M. Craig	F. J. Schaaf, Jr.
R. R. Croft	C. T. Smith
E. L. Farrow	H. E. Svetlik
E. M. Focht	D. M. Vickery
M. Golliet	Z. J. Zhou
A. N. Haddad	

Working Group on Nuclear High-Temperature Gas-Cooled Reactors (BPV III)

N. Broom, <i>Chair</i>	Y. W. Kim
J. E. Nestell, <i>Secretary</i>	T. R. Lupold
T. D. Burchell	D. L. Marriott
R. S. Hill III	D. K. Morton
W. Hoffelner	T.-L. Sham
E. V. Imbro	Y. Tachibana
R. I. Jetter	T. Yuhara

Subgroup on Graphite Core Components (BPV III)

T. D. Burchell, <i>Chair</i>	G. O. Hayner
C. A. Sanna, <i>Staff Secretary</i>	M. P. Hindley
A. Appleton	Y. Katoh
R. L. Bratton	M. N. Mitchell
S.-H. Chi	N. N. Nemeth
M. W. Davies	T. Oku
S. W. Doms	J. Ossmann
S. F. Duffy	T. Shibata
B. D. Frew	M. Srinivasan
O. Gelineau	A. G. Steer
S. T. Gonczy	S. Yu

Subgroup on Industry Experience for New Plants (BPV III & BPV XI)

G. M. Foster, <i>Chair</i>	O.-S. Kim
J. T. Lindberg, <i>Chair</i>	K. Matsunaga
H. L. Gustin, <i>Secretary</i>	D. E. Matthews
V. L. Armentrout	R. E. McLaughlin
T. L. Chan	J. Ossmann
M. L. Coats	R. D. Patel
A. A. Dermenjian	J. C. Poehler
J. Fletcher	D. W. Sandusky
E. B. Gerlach	R. R. Schaefer
D. O. Henry	D. M. Swann
J. Honcharik	T. Tsuruta
E. V. Imbro	E. R. Willis
C. C. Kim	S. M. Yee

Subgroup on Fusion Energy Devices (BPV III)

W. K. Sowder, Jr., <i>Chair</i>	S. Lee
D. Andrei, <i>Staff Secretary</i>	G. Li
R. W. Barnes	X. Li
M. Higuchi	P. Mokaria
G. Holtmeier	D. J. Roszman
K. A. Kavanagh	S. J. Salvador
H.-J. Kim	

Subgroup on High-Temperature Reactors (BPV III)

M. Morishita, <i>Chair</i>	W. Hoffelner
R. I. Jetter, <i>Vice Chair</i>	G. H. Koo
T.-L. Sham, <i>Secretary</i>	D. K. Morton
N. Broom	J. E. Nestell
T. D. Burchell	N. N. Ray

Working Group on Liquid Metal Reactors (BPV III)

T.-L. Sham, <i>Chair</i>	R. I. Jetter
T. Asayama, <i>Secretary</i>	G. H. Koo
R. W. Barnes	M. Li
P. Carter	S. Majumdar
C. M. Faidy	M. Morishita
W. Hoffelner	J. E. Nestell

Subgroup on Design Analysis (BPV III)

G. L. Hollinger, <i>Chair</i>	W. J. Koves
W. F. Weitzel, <i>Secretary</i>	K. Matsunaga
S. A. Adams	G. A. Miller
M. R. Breach	W. D. Reinhardt
R. G. Brown	D. H. Roarty
T. M. Damiani	G. Sannazzaro
B. F. Hantz	T. G. Seipp
C. F. Heberling II	G. Taxacher
C. E. Hinnant	R. A. Whipple
D. P. Jones	K. Wright
A. Kalnins	

Subgroup on Elevated Temperature Design (BPV III)

R. I. Jetter, <i>Chair</i>	A. B. Hull
T.-L. Sham, <i>Secretary</i>	M. H. Jawad
J. J. Abou-Hanna	G. H. Koo
T. Asayama	W. J. Koves
C. Becht IV	M. Li
F. W. Brust	S. Majumdar
P. Carter	D. L. Marriott
J. F. Cervenka	T. E. McGreevy
B. Dogan	J. E. Nestell
D. S. Griffin	W. J. O'Donnell
B. F. Hantz	R. W. Swindeman
W. Hoffelner	

Subgroup on Fatigue Strength (BPV III)

W. J. O'Donnell, <i>Chair</i>	G. Kharshafdjian
S. A. Adams	S. Majumdar
G. S. Chakrabarti	S. N. Malik
T. M. Damiani	R. Nayal
P. R. Donavin	D. H. Roarty
R. J. Gurdal	M. S. Shelton
C. F. Heberling II	G. Taxacher
C. E. Hinnant	A. Tsigiritis
P. Hirschberg	K. Wright
D. P. Jones	H. H. Ziada



**JOINT ACI-ASME COMMITTEE ON
CONCRETE COMPONENTS FOR NUCLEAR SERVICE (BPV 3C)**

A. C. Eberhardt, <i>Chair</i>	B. B. Scott
C. T. Smith, <i>Vice Chair</i>	R. E. Shewmaker
M. L. Vazquez, <i>Staff Secretary</i>	J. D. Stevenson
N. Alchaar	M. L. Williams
J. F. Artuso	T. D. Al-Shawaf, <i>Contributing Member</i>
C. J. Bang	B. A. Erler, <i>Contributing Member</i>
F. Farzam	T. E. Johnson, <i>Contributing Member</i>
P. S. Ghosal	T. Muraki, <i>Contributing Member</i>
J. Gutierrez	M. R. Senecal, <i>Contributing Member</i>
J. K. Harrold	M. K. Thumm, <i>Contributing Member</i>
G. A. Harstead	
M. F. Hessheimer	
T. C. Inman	
O. Jovall	
N.-H. Lee	
J. Munshi	
N. Orbovic	

Working Group on Design (BPV 3C)

J. Munshi, <i>Chair</i>	M. F. Hessheimer
N. Alchaar	T. C. Inman
L. J. Colarusso	T. E. Johnson
A. C. Eberhardt	O. Jovall
F. Farzam	N.-H. Lee
P. S. Ghosal	J. D. Stevenson
J. K. Harrold	M. K. Thumm
G. A. Harstead	

**Working Group on Materials, Fabrication, and Examination
(BPV 3C)**

J. F. Artuso, <i>Chair</i>	J. Gutierrez
P. S. Ghosal, <i>Vice Chair</i>	B. B. Scott
M. L. Williams, <i>Secretary</i>	C. T. Smith
A. C. Eberhardt	J. F. Strunk

Working Group on Modernization (BPV 3C)

N. Alchaar, <i>Chair</i>	J. K. Harrold
O. Jovall, <i>Vice Chair</i>	N. Orbovic
C. T. Smith, <i>Secretary</i>	M. A. Ugalde
J. F. Artuso	

COMMITTEE ON HEATING BOILERS (BPV IV)

T. L. Bedeaux, <i>Chair</i>	J. L. Kleiss
J. A. Hall, <i>Vice Chair</i>	M. R. Klosterman
G. Moino, <i>Staff Secretary</i>	K. M. McTague
J. Calland	P. A. Molvie
J. P. Chicoine	B. W. Moore
C. M. Dove	R. E. Olson
B. G. French	T. M. Parks
W. L. Haag, Jr.	R. V. Wielgoszinski
A. Heino	H. Michael, <i>Delegate</i>
B. J. Iske	D. Picart, <i>Delegate</i>
D. J. Jenkins	E. A. Nordstrom, <i>Alternate</i>

Subgroup on Care and Operation of Heating Boilers (BPV IV)

P. A. Molvie

Subgroup on Cast Iron Boilers (BPV IV)

K. M. McTague, <i>Chair</i>	V. G. Kleffis
T. L. Bedeaux, <i>Vice Chair</i>	J. L. Kliess
J. P. Chicoine	E. A. Nordstrom
B. G. French	M. T. Roby, <i>Alternate</i>
J. A. Hall	

Subgroup on Materials (BPV IV)

J. A. Hall, <i>Chair</i>	A. Heino
M. Wadkinson, <i>Vice Chair</i>	B. J. Iske
J. Calland	J. L. Kliess

Subgroup on Water Heaters (BPV IV)

J. Calland, <i>Chair</i>	O. A. Missoum
J. P. Chicoine	R. E. Olson
B. G. French	F. J. Schreiner
T. D. Gantt	M. A. Taylor
B. J. Iske	T. E. Trant
K. M. McTague	M. T. Roby, <i>Alternate</i>

Subgroup on Welded Boilers (BPV IV)

J. Calland, <i>Chair</i>	M. Wadkinson
T. L. Bedeaux	R. V. Wielgoszinski
C. M. Dove	H. Michael, <i>Delegate</i>
B. G. French	J.-M. Andre, <i>Contributing Member</i>
E. A. Nordstrom	
R. E. Olson	

**COMMITTEE ON
NONDESTRUCTIVE EXAMINATION (BPV V)**

J. E. Batey, <i>Chair</i>	M. D. Moles
F. B. Kovacs, <i>Vice Chair</i>	A. B. Nagel
J. S. Brzuszkiewicz, <i>Staff Secretary</i>	T. L. Plasek
S. J. Akryn	F. J. Sattler
C. A. Anderson	G. M. Gatti, <i>Delegate</i>
J. E. Aycock	B. H. Clark, Jr., <i>Honorary Member</i>
A. S. Birks	H. C. Graber, <i>Honorary Member</i>
P. L. Brown	O. F. Hedden, <i>Honorary Member</i>
M. A. Burns	J. R. MacKay, <i>Honorary Member</i>
N. Y. Faransso	T. G. McCarty, <i>Honorary Member</i>
A. F. Garbolevsky	
G. W. Hembree	
R. W. Kruzic	
J. R. McGimpsey	

**Subgroup on General Requirements/
Personnel Qualifications and Inquiries (BPV V)**

F. B. Kovacs, <i>Chair</i>	N. Y. Faransso
C. A. Anderson	G. W. Hembree
J. E. Aycock	J. W. Houf
J. E. Batey	J. R. MacKay
A. S. Birks	J. P. Swezy, Jr.



Subgroup on Surface Examination Methods (BPV V)

J. E. Aycocock, *Chair*
 S. J. Akrin
 A. S. Birks
 P. L. Brown
 B. Caccamise
 N. Y. Faransso
 N. Farrenbaugh
 N. A. Finney
 G. W. Hembree
 R. W. Kruzic
 F. J. Sattler
 G. M. Gatti, *Delegate*

Subgroup on Volumetric Methods (BPV V)

G. W. Hembree, *Chair*
 S. J. Akrin
 J. E. Aycocock
 J. E. Batey
 P. L. Brown
 B. Caccamise
 N. Y. Faransso
 A. F. Garbolevsky
 J. F. Halley
 R. W. Hardy
 F. B. Kovacs
 R. W. Kruzic
 J. R. McGimpsey
 M. D. Moles
 A. B. Nagel
 T. L. Plasek
 F. J. Sattler
 G. M. Gatti, *Delegate*

Working Group on Acoustic Emissions (SG-VM) (BPV V)

N. Y. Faransso, *Chair*
 J. E. Aycocock
 J. E. Batey
 R. K. Miller

Working Group on Radiography (SG-VM) (BPV V)

F. B. Kovacs, *Chair*
 S. J. Akrin
 J. E. Aycocock
 J. E. Batey
 P. L. Brown
 B. Caccamise
 N. Y. Faransso
 A. F. Garbolevsky
 R. W. Hardy
 G. W. Hembree
 R. W. Kruzic
 J. R. McGimpsey
 R. J. Mills
 A. B. Nagel
 T. L. Plasek
 D. E. Williams

Working Group on Ultrasonics (SG-VM) (BPV V)

R. W. Kruzic, *Chair*
 J. E. Aycocock
 B. Caccamise
 K. J. Chizen
 N. Y. Faransso
 N. A. Finney
 J. F. Halley
 O. F. Hedden
 M. D. Moles
 A. B. Nagel
 F. J. Sattler

Working Group on Guided Wave Ultrasonic Testing (SG-VM) (BPV V)

N. Y. Faransso, *Chair*
 J. F. Halley
 M. D. Moles

COMMITTEE ON PRESSURE VESSELS (BPV VIII)

U. R. Miller, *Chair*
 R. J. Basile, *Vice Chair*
 S. J. Rossi, *Staff Secretary*
 T. Schellens, *Staff Secretary*
 V. Bogosian
 J. Cameron
 A. Chaudouet
 D. B. DeMichael
 J. P. Glaspie
 M. Gold
 J. F. Grubb
 L. E. Hayden, Jr.
 G. G. Karcher
 K. T. Lau
 J. S. Lee
 R. Mahadeen
 R. W. Mikitka
 K. Mokhtarian
 C. C. Neely
 T. W. Norton
 T. P. Pastor
 D. T. Peters
 M. J. Pischke
 M. D. Rana
 G. B. Rawls, Jr.
 S. C. Roberts
 C. D. Rodery
 A. Selz
 J. R. Sims, Jr.
 E. Soltow
 D. A. Swanson
 K. K. Tam
 S. Terada
 E. Uptis
 P. A. McGowan, *Delegate*
 H. Michael, *Delegate*
 K. Oyamada, *Delegate*
 M. E. Papponetti, *Delegate*
 D. Rui, *Delegate*
 T. Tahara, *Delegate*
 W. S. Jacobs, *Contributing Member*

Subgroup on Design (BPV VIII)

R. J. Basile, *Chair*
 M. D. Lower, *Secretary*
 O. A. Barsky
 F. L. Brown
 J. R. Farr
 C. E. Hinnant
 M. H. Jawad
 R. W. Mikitka
 U. R. Miller
 K. Mokhtarian
 T. P. Pastor
 M. D. Rana
 G. B. Rawls, Jr.
 S. C. Roberts
 C. D. Rodery
 A. Selz
 S. C. Shah
 J. C. Sowinski
 C. H. Sturgeon
 D. A. Swanson
 K. K. Tam
 J. Vattappilly
 R. A. Whipple
 A. A. Gibbs, *Delegate*
 K. Oyamada, *Delegate*
 M. E. Papponetti, *Delegate*
 W. S. Jacobs, *Corresponding Member*
 E. L. Thomas, Jr., *Honorary Member*

Subgroup on Fabrication and Inspection (BPV VIII)

C. D. Rodery, *Chair*
 J. P. Swezy, Jr., *Vice Chair*
 B. R. Morelock, *Secretary*
 J. L. Arnold
 W. J. Bees
 L. F. Campbell
 H. E. Gordon
 D. J. Kreft
 J. S. Lee
 D. I. Morris
 M. J. Pischke
 M. J. Rice
 B. F. Shelley
 P. L. Sturgill
 T. Tahara
 K. Oyamada, *Delegate*
 R. Uebel, *Delegate*
 W. S. Jacobs, *Contributing Member*

Subgroup on General Requirements (BPV VIII)

S. C. Roberts, *Chair*
 D. B. DeMichael, *Vice Chair*
 F. L. Richter, *Secretary*
 R. J. Basile
 V. Bogosian
 D. T. Davis
 J. P. Glaspie
 L. E. Hayden, Jr.
 K. T. Lau
 M. D. Lower
 C. C. Neely
 A. S. Olivares
 J. C. Sowinski
 D. B. Stewart
 D. A. Swanson
 K. K. Tam
 A. A. Gibbs, *Delegate*
 K. Oyamada, *Delegate*
 R. Uebel, *Delegate*

Subgroup on Heat Transfer Equipment (BPV VIII)

R. Mahadeen, *Chair*
 T. W. Norton, *Vice Chair*
 G. Auriolos, Sr., *Secretary*
 S. R. Babka
 J. H. Barbee
 O. A. Barsky
 I. G. Campbell
 A. Chaudouet
 M. D. Clark
 J. I. Gordon
 M. J. Holtz
 F. E. Jehrio
 G. G. Karcher
 D. L. Kurlé
 B. J. Lerch
 S. Mayeux
 U. R. Miller
 R. J. Stastny
 R. P. Wiberg
 K. Oyamada, *Delegate*
 F. Osweiller, *Corresponding Member*
 S. Yokell, *Corresponding Member*
 S. M. Caldwell, *Honorary Member*



Subgroup on High-Pressure Vessels (BPV VIII)

D. T. Peters, <i>Chair</i>	E. A. Rodriguez
A. P. Maslowski, <i>Staff Secretary</i>	E. D. Roll
L. P. Antalffy	J. R. Sims, Jr.
R. C. Biel	D. L. Stang
P. N. Chaku	F. W. Tatar
R. Cordes	S. Terada
R. D. Dixon	J. L. Traud
L. Fridlund	R. Wink
D. M. Fryer	K. Oyamada, <i>Delegate</i>
R. T. Hallman	R. M. Hoshman, <i>Contributing Member</i>
A. H. Honza	M. D. Mann, <i>Contributing Member</i>
M. M. James	G. J. Mraz, <i>Contributing Member</i>
P. Jansson	D. J. Burns, <i>Honorary Member</i>
J. A. Kapp	E. H. Perez, <i>Honorary Member</i>
J. Keltjens	
D. P. Kendall	
A. K. Khare	
S. C. Mordre	

Subgroup on Materials (BPV VIII)

J. F. Grubb, <i>Chair</i>	K. Oyamada, <i>Delegate</i>
J. Cameron, <i>Vice Chair</i>	E. E. Morgenegg, <i>Corresponding Member</i>
P. G. Wittenbach, <i>Secretary</i>	E. G. Nisbett, <i>Corresponding Member</i>
A. Di Rienzo	G. S. Dixit, <i>Contributing Member</i>
M. Gold	J. A. McMaster, <i>Contributing Member</i>
M. Katcher	
W. M. Lundy	
D. W. Rahoi	
R. C. Sutherlin	
E. Upitis	

Subgroup on Toughness (BPV II & BPV VIII)

D. A. Swanson, <i>Chair</i>	C. C. Neely
J. L. Arnold	M. D. Rana
R. J. Basile	F. L. Richter
J. Cameron	J. P. Swezy, Jr.
H. E. Gordon	E. Upitis
W. S. Jacobs	J. Vattappilly
D. L. Kurlle	K. Oyamada, <i>Delegate</i>
K. Mokhtarian	

Special Working Group on Graphite Pressure Equipment (BPV VIII)

E. Soltow, <i>Chair</i>	B. Lukasch
T. F. Bonn	S. Malone
F. L. Brown	M. R. Minick
R. W. Dickerson	A. A. Stupica

Special Working Group on Bolted Flanged Joints (BPV VIII)

R. W. Mikitka, <i>Chair</i>	W. J. Koves
G. D. Bibel	M. S. Shelton
W. Brown	

Task Group on Design (BPV VIII)

J. Keltjens, <i>Chair</i>	G. T. Nelson
R. C. Biel	E. H. Perez
D. J. Burns	D. T. Peters
R. Cordes	E. D. Roll
R. D. Dixon	J. R. Sims, Jr.
L. Fridlund	D. L. Stang
D. M. Fryer	S. Terada
R. T. Hallman	J. L. Traud
D. P. Kendall	R. Wink
S. C. Mordre	

Task Group on Materials (BPV VIII)

F. W. Tatar, <i>Chair</i>	M. M. James
L. P. Antalffy	J. A. Kapp
P. N. Chaku	A. K. Khare

Task Group on Impulsively Loaded Vessels (BPV VIII)

R. E. Nickell, <i>Chair</i>	D. Hilding
E. A. Rodriguez, <i>Vice Chair</i>	K. W. King
P. O. Leslie, <i>Secretary</i>	R. Kitamura
G. A. Antaki	R. A. Leishear
J. K. Asahina	F. Ohlson
D. D. Barker	C. Romero
D. W. Bowman	J. E. Shepherd
A. M. Clayton	Q. Dong, <i>Corresponding Member</i>
J. E. Didlake, Jr.	M. Yip, <i>Corresponding Member</i>
T. A. Duffey	C. R. Vaught, <i>Alternate</i>
B. L. Haroldsen	
H. L. Heaton	

COMMITTEE ON WELDING AND BRAZING (BPV IX)

W. J. Sperko, <i>Chair</i>	M. J. Pischke
D. A. Bowers, <i>Vice Chair</i>	M. J. Rice
S. J. Rossi, <i>Staff Secretary</i>	M. B. Sims
M. Bernasek	M. J. Stanko
R. K. Brown, Jr.	J. P. Swezy, Jr.
M. L. Carpenter	P. L. Van Fosson
J. G. Feldstein	R. R. Young
P. D. Flenner	S. A. Jones, <i>Contributing Member</i>
R. M. Jessee	S. Raghunathan, <i>Contributing Member</i>
J. S. Lee	W. D. Doty, <i>Honorary Member</i>
W. M. Lundy	S. D. Reynolds, Jr., <i>Honorary Member</i>
T. Melfi	
W. F. Newell, Jr.	
B. R. Newmark	
A. S. Olivares	

Subgroup on Brazing (BPV IX)

M. J. Pischke, <i>Chair</i>	M. L. Carpenter
E. W. Beckman	A. F. Garbolevsky
L. F. Campbell	J. P. Swezy, Jr.

Subgroup on General Requirements (BPV IX)

B. R. Newmark, <i>Chair</i>	H. B. Porter
E. W. Beckman	P. L. Sturgill
P. R. Evans	K. R. Willens
A. Howard	E. W. Woelfel
R. M. Jessee	E. Molina, <i>Delegate</i>
A. S. Olivares	



Subgroup on Materials (BPV IX)

M. L. Carpenter, <i>Chair</i>	S. D. Reynolds, Jr.
J. L. Arnold	C. E. Sainz
M. Bernasek	W. J. Sperko
S. E. Gingrich	M. J. Stanko
R. M. Jessee	P. L. Sturgill
C. C. Kim	R. R. Young
T. Melfi	V. G. V. Giunto, <i>Delegate</i>

Subgroup on Performance Qualification (BPV IX)

D. A. Bowers, <i>Chair</i>	K. L. Hayes
V. A. Bell	J. S. Lee
M. A. Boring	W. M. Lundy
R. B. Corbit	E. G. Reichelt
P. R. Evans	M. B. Sims
P. D. Flenner	

Subgroup on Procedure Qualification (BPV IX)

D. A. Bowers, <i>Chair</i>	M. B. Sims
M. J. Rice, <i>Secretary</i>	W. J. Sperko
M. Bernasek	S. A. Sprague
M. A. Boring	J. P. Swezy, Jr.
R. K. Brown, Jr.	P. L. Van Fosson
J. R. McGimpsey	T. C. Wiesner
W. F. Newell, Jr.	E. Molina, <i>Delegate</i>
A. S. Olivares	

COMMITTEE ON**FIBER-REINFORCED PLASTIC PRESSURE VESSELS (BPV X)**

D. Eisberg, <i>Chair</i>	B. M. Linnemann
P. D. Stumpf, <i>Staff Secretary</i>	N. L. Newhouse
F. L. Brown	D. J. Painter
J. L. Bustillos	G. Ramirez
T. W. Cowley	J. R. Richter
I. L. Dinovo	J. A. Rolston
T. J. Fowler	B. F. Shelley
M. R. Gorman	F. W. Van Name
D. H. Hodgkinson	D. O. Yancey, Jr.
L. E. Hunt	P. H. Ziehl
D. L. Keeler	

COMMITTEE ON**NUCLEAR INSERVICE INSPECTION (BPV XI)**

G. C. Park, <i>Chair</i>	R. K. Rhyne
R. W. Swayne, <i>Vice Chair</i>	D. A. Scarth
R. L. Crane, <i>Staff Secretary</i>	F. J. Schaaf, Jr.
V. L. Armentrout	J. C. Spanner, Jr.
W. H. Bamford, Jr.	K. B. Thomas
T. L. Chan	D. E. Waskey
R. C. Cipolla	R. A. West
D. D. Davis	C. J. Wirtz
G. H. DeBoo	R. A. Yonekawa
R. L. Dyle	T. Yuhara
E. L. Farrow	H. D. Chung, <i>Delegate</i>
J. Fletcher	J. T. Lindberg, <i>Alternate</i>
E. B. Gerlach	G. L. Stevens, <i>Alternate</i>
R. E. Gimple	L. J. Chockie, <i>Honorary Member</i>
T. J. Griesbach	C. D. Cowfer, <i>Honorary Member</i>
K. Hasegawa	F. E. Gregor, <i>Honorary Member</i>
D. O. Henry	O. F. Hedden, <i>Honorary Member</i>
R. D. Kerr	P. C. Riccardella, <i>Honorary Member</i>
S. D. Kulat	K. K. Yoon, <i>Honorary Member</i>
G. L. Lagleder	
D. W. Lamond	
G. A. Lofthus	
W. E. Norris	
J. E. O'Sullivan	
A. S. Reed	

Executive Committee (BPV XI)

R. W. Swayne, <i>Chair</i>	W. E. Norris
G. C. Park, <i>Vice Chair</i>	R. K. Rhyne
R. L. Crane, <i>Staff Secretary</i>	J. C. Spanner, Jr.
W. H. Bamford, Jr.	K. B. Thomas
R. L. Dyle	R. A. West
R. E. Gimple	R. A. Yonekawa
J. T. Lindberg	

Subgroup on Evaluation Standards (SG-ES) (BPV XI)

W. H. Bamford, Jr., <i>Chair</i>	K. Koyama
G. L. Stevens, <i>Secretary</i>	D. R. Lee
H. D. Chung	H. S. Mehta
R. C. Cipolla	J. G. Merkle
G. H. DeBoo	M. A. Mitchell
R. L. Dyle	K. Miyazaki
B. R. Ganta	S. Ranganath
T. J. Griesbach	D. A. Scarth
K. Hasegawa	T.-L. Sham
K. Hojo	T. V. Vo
D. N. Hopkins	K. R. Wichman
Y. Imamura	

Working Group on Flaw Evaluation (SG-ES) (BPV XI)

R. C. Cipolla, <i>Chair</i>	J. G. Merkle
G. H. DeBoo, <i>Secretary</i>	G. A. Miessi
W. H. Bamford, Jr.	K. Miyazaki
M. Basol	R. K. Qashu
B. Bezensek	S. Ranganath
H. D. Chung	D. L. Rudland
B. R. Ganta	P. J. Rush
R. G. Gilada	D. A. Scarth
H. L. Gustin	W. L. Server
F. D. Hayes	N. J. Shah
P. H. Hoang	T. V. Vo
K. Hojo	K. R. Wichman
D. N. Hopkins	G. M. Wilkowski
K. Koyama	S. X. Xu
D. R. Lee	K. K. Yoon
H. S. Mehta	V. A. Zilberstein

Working Group on Operating Plant Criteria (SG-ES) (BPV XI)

T. J. Griesbach, <i>Chair</i>	H. S. Mehta
D. V. Sommerville, <i>Secretary</i>	M. A. Mitchell
W. H. Bamford, Jr.	R. Pace
H. Behnke	N. A. Palm
T. L. Dickson	S. Ranganath
R. L. Dyle	W. L. Server
S. R. Gosselin	D. P. Weakland
M. Hayashi	

Working Group on Pipe Flaw Evaluation (SG-ES) (BPV XI)

D. A. Scarth, <i>Chair</i>	K. Hojo
G. M. Wilkowski, <i>Secretary</i>	D. N. Hopkins
T. A. Bacon	K. Kashima
W. H. Bamford, Jr.	R. O. McGill
B. Bezensek	H. S. Mehta
H. D. Chung	K. Miyazaki
R. C. Cipolla	D. L. Rudland
N. G. Cofie	P. J. Rush
J. M. Davis	T.-L. Sham
G. H. DeBoo	D. J. Shim
B. Dogan	T. V. Vo
B. R. Ganta	B. S. Wasiluk
L. F. Goyette	S. X. Xu
K. Hasegawa	K. K. Yoon
P. H. Hoang	V. A. Zilberstein



Subgroup on Nondestructive Examination (SG-NDE) (BPV XI)

J. C. Spanner, Jr., <i>Chair</i>	G. L. Lagleder
G. A. Lofthus, <i>Secretary</i>	J. T. Lindberg
C. A. Anderson	T. R. Lupold
T. L. Chan	G. R. Perkins
C. B. Cheezem	A. S. Reed
D. R. Cordes	S. A. Sabo
F. E. Dohmen	F. J. Schaaf, Jr.
M. E. Gothard	C. J. Wirtz
D. O. Henry	

Working Group on Design and Programs (SG-RRR) (BPV XI)

E. B. Gerlach, <i>Chair</i>	D. R. Graham
S. B. Brown, <i>Secretary</i>	G. F. Harttraft
O. Bhattay	T. E. Hiss
J. W. Collins	M. A. Pyne
R. R. Croft	R. R. Stevenson
G. G. Elder	R. W. Swayne
E. V. Farrell, Jr.	A. H. Taufique
S. K. Fisher	T. P. Vassallo, Jr.
J. M. Gamber	R. A. Yonekawa

Working Group on Personnel Qualification and Surface Visual and Eddy Current Examination (SG-NDE) (BPV XI)

A. S. Reed, <i>Chair</i>	J. T. Lindberg
D. R. Cordes, <i>Secretary</i>	D. R. Quattlebaum, Jr.
C. A. Anderson	D. Spake
B. L. Curtis	J. C. Spanner, Jr.
N. Farenbaugh	N. C. Weatherly
D. O. Henry	M. L. Whytsell
K. M. Hoffman	C. J. Wirtz
J. W. Houf	

Subgroup on Water-Cooled Systems (SG-WCS) (BPV XI)

K. B. Thomas, <i>Chair</i>	S. D. Kulat
N. A. Palm, <i>Secretary</i>	D. W. Lamond
J. M. Agold	A. McNeill III
V. L. Armentrout	T. Nomura
J. M. Boughman	W. E. Norris
S. T. Chesworth	G. C. Park
D. D. Davis	J. E. Staffiera
H. Q. Do	H. M. Stephens, Jr.
E. L. Farrow	R. A. West
M. J. Ferlisi	G. E. Whitman
O. F. Hedden	H. L. Graves III, <i>Alternate</i>
P. J. Hennessey	

Working Group on Procedure Qualification and Volumetric Examination (SG-NDE) (BPV XI)

M. E. Gothard, <i>Chair</i>	K. J. Hacker
G. R. Perkins, <i>Secretary</i>	G. A. Lofthus
M. T. Anderson	C. A. Nove
C. B. Cheezem	S. A. Sabo
A. D. Chockie	R. V. Swain
S. R. Doctor	B. A. Thigpen
F. E. Dohmen	S. J. Todd

Working Group on Containment (SG-WCS) (BPV XI)

J. E. Staffiera, <i>Chair</i>	H. T. Hill
H. M. Stephens, Jr., <i>Secretary</i>	R. D. Hough
S. G. Brown	C. N. Krishnaswamy
J. W. Crider	D. J. Naus
P. S. Ghosal	F. Poteet III
D. H. Goche	G. Thomas
H. L. Graves III	W. E. Norris, <i>Alternate</i>

Subgroup on Repair/Replacement Activities (SG-RRR) (BPV XI)

R. A. Yonekawa, <i>Chair</i>	K. J. Karwoski
E. V. Farrell, Jr., <i>Secretary</i>	R. D. Kerr
S. B. Brown	S. L. McCracken
R. E. Cantrell	B. R. Newton
P. D. Fisher	J. E. O'Sullivan
J. M. Gamber	R. R. Stevenson
E. B. Gerlach	R. W. Swayne
R. E. Gimple	D. E. Waskey
D. R. Graham	J. G. Weicks
R. A. Hermann	E. G. Reichelt, <i>Alternate</i>

Working Group on ISI Optimization (SG-WCS) (BPV XI)

D. R. Cordes, <i>Chair</i>	A. H. Mahindrakar
S. A. Norman, <i>Secretary</i>	E. L. McClain
W. H. Bamford, Jr.	F. Poteet III
J. M. Boughman	S. A. Sabo
J. W. Collins	K. B. Thomas
M. E. Gothard	G. E. Whitman
R. E. Hall	Y. Yuguchi

Working Group on Welding and Special Repair Processes (SG-RRR) (BPV XI)

D. E. Waskey, <i>Chair</i>	M. Lau
D. J. Tilly, <i>Secretary</i>	S. L. McCracken
R. E. Cantrell	D. B. Meredith
S. J. Findlan	B. R. Newton
P. D. Fisher	J. E. O'Sullivan
M. L. Hall	R. E. Smith
R. A. Hermann	J. G. Weicks
K. J. Karwoski	K. R. Willens
C. C. Kim	

Working Group on Implementation of Risk-Based Examination (SG-WCS) (BPV XI)

S. D. Kulat, <i>Chair</i>	K. M. Hoffman
S. T. Chesworth, <i>Secretary</i>	D. W. Lamond
J. M. Agold	J. T. Lewis
C. Cueto-Felgueroso	R. K. Mattu
H. Q. Do	A. McNeill III
R. Fougousse	P. J. O'Regan
M. R. Graybeal	N. A. Palm
R. Haessler	M. A. Pyne
J. Hakii	J. C. Younger
K. W. Hall	



**Working Group on Inspection of Systems and Components
(SG-WCS) (BPV XI)**

J. M. Agold, <i>Chair</i>	S. D. Kulat
V. L. Armentrout, <i>Secretary</i>	T. A. Meyer
C. Cueto-Felgueroso	D. G. Naujock
R. E. Day	T. Nomura
H. Q. Do	J. C. Nygaard
M. J. Ferlisi	C. M. Ross
R. Fougousse	K. B. Thomas
K. W. Hall	G. E. Whitman

Working Group on Pressure Testing (SG-WCS) (BPV XI)

D. W. Lamond, <i>Chair</i>	R. E. Hall
J. M. Boughman, <i>Secretary</i>	T. R. Lupold
Y.-K. Chung	J. K. McClanahan
J. J. Churchwell	B. L. Montgomery
T. Coste	P. N. Passalugo
J. A. Doughty	

Special Working Group on Editing and Review (BPV XI)

R. W. Swayne, <i>Chair</i>	J. E. Staffiera
C. E. Moyer	D. J. Tilly
K. R. Rao	C. J. Wirtz

**Special Working Group on Nuclear Plant Aging Management
(BPV XI)**

T. A. Meyer, <i>Chair</i>	A. B. Meichler
D. V. Burgess, <i>Secretary</i>	R. E. Nickell
S. Asada	K. Sakamoto
Y.-K. Chung	W. L. Server
B. Clark III	R. L. Turner
D. D. Davis	G. G. Young
A. L. Hiser, Jr.	C. E. Carpenter, <i>Alternate</i>

**Special Working Group on High-Temperature Gas-Cooled
Reactors (BPV XI)**

J. Fletcher, <i>Chair</i>	M. R. Graybeal
F. J. Schaaf, Jr., <i>Vice Chair</i>	A. B. Hull
M. A. Lockwood, <i>Secretary</i>	R. K. Miller
N. Broom	M. N. Mitchell
C. Cueto-Felgueroso	T. Roney
S. R. Doctor	R. W. Swayne

Working Group on General Requirements (BPV XI)

R. K. Rhyne, <i>Chair</i>	R. Fox
E. J. Maloney, <i>Secretary</i>	P. J. Hennessey
G. P. Alexander	R. K. Mattu
T. L. Chan	C. E. Moyer
M. L. Coats	R. L. Williams
E. L. Farrow	

COMMITTEE ON TRANSPORT TANKS (BPV XII)

M. D. Rana, <i>Chair</i>	M. D. Pham
S. Staniszewski, <i>Vice Chair</i>	M. Pitts
D. R. Sharp, <i>Staff Secretary</i>	T. A. Rogers
A. N. Antoniou	A. Selz
C. H. Hochman	A. P. Varghese
G. G. Karcher	M. R. Ward
N. J. Paulick	

Subgroup on Design and Materials (BPV XII)

A. P. Varghese, <i>Chair</i>	N. J. Paulick
R. C. Sallash, <i>Secretary</i>	M. D. Pham
D. K. Chandiramani	M. D. Rana
P. Chilukuri	T. A. Rogers
T. Hitchcock	A. Selz
G. G. Karcher	M. R. Ward
T. P. Lokey	K. Xu
S. L. McWilliams	

**Subgroup on Fabrication, Inspection, and Continued Service
(BPV XII)**

M. Pitts, <i>Chair</i>	T. P. Lokey
P. Chilukuri, <i>Secretary</i>	A. S. Olivares
J. A. Byers	R. C. Sallash
W. L. Garfield	S. Staniszewski
D. J. Kreft	L. H. Strouse

Subgroup on General Requirements (BPV XII)

C. H. Hochman, <i>Chair</i>	B. F. Pittel
A. N. Antoniou, <i>Secretary</i>	M. Pitts
T. W. Alexander	T. Rummel
S. E. Benet	R. C. Sallash
J. L. Freiler	S. Staniszewski
W. L. Garfield	L. H. Strouse
K. L. Gilmore	

Subgroup on Nonmandatory Appendices (BPV XII)

T. A. Rogers, <i>Chair</i>	D. D. Brusewitz, <i>Contributing Member</i>
S. Staniszewski, <i>Secretary</i>	J. L. Conley, <i>Contributing Member</i>
S. E. Benet	T. Eubanks, <i>Contributing Member</i>
P. Chilukuri	T. Hitchcock, <i>Contributing Member</i>
S. L. McWilliams	N. J. Paulick, <i>Contributing Member</i>
M. Pitts	
A. Selz	
D. G. Shelton	
A. P. Varghese	
M. R. Ward	

**COMMITTEE ON BOILER AND
PRESSURE VESSEL CONFORMITY ASSESSMENT (CBPVCA)**

W. C. LaRochelle, <i>Chair</i>	V. Bogosian, <i>Alternate</i>
P. D. Edwards, <i>Vice Chair</i>	D. C. Cook, <i>Alternate</i>
K. I. Baron, <i>Staff Secretary</i>	R. D. Danzy, <i>Alternate</i>
W. J. Bees	M. A. DeVries, <i>Alternate</i>
S. W. Cameron	G. L. Hollinger, <i>Alternate</i>
T. E. Hansen	D. W. King, <i>Alternate</i>
D. J. Jenkins	B. L. Krasium, <i>Alternate</i>
K. T. Lau	P. F. Martin, <i>Alternate</i>
L. E. McDonald	K. McPhie, <i>Alternate</i>
K. M. McTague	G. P. Milley, <i>Alternate</i>
D. Miller	M. R. Minick, <i>Alternate</i>
B. R. Morelock	T. W. Norton, <i>Alternate</i>
J. D. O'Leary	F. J. Pavlovicz, <i>Alternate</i>
T. M. Parks	M. T. Roby, <i>Alternate</i>
B. C. Turczynski	J. A. West, <i>Alternate</i>
D. E. Tuttle	R. V. Wielgoszinski, <i>Alternate</i>
E. A. Whittle	A. J. Spencer, <i>Honorary Member</i>
S. F. Harrison, Jr., <i>Contributing Member</i>	



COMMITTEE ON NUCLEAR CERTIFICATION (CNC)

R. R. Stevenson, <i>Chair</i>	V. Bogosian, <i>Alternate</i>
W. C. LaRochelle, <i>Vice Chair</i>	P. D. Edwards, <i>Alternate</i>
P. Camurati, <i>Staff Secretary</i>	D. P. Gobbi, <i>Alternate</i>
M. N. Bressler	J. W. Highlands, <i>Alternate</i>
G. Deily	K. M. Hottle, <i>Alternate</i>
S. M. Goodwin	K. A. Kavanagh, <i>Alternate</i>
K. A. Huber	B. G. Kovarik, <i>Alternate</i>
M. Kotb	B. L. Krasiun, <i>Alternate</i>
J. C. Krane	M. A. Lockwood, <i>Alternate</i>
R. P. McIntyre	R. J. Luymes, <i>Alternate</i>
M. R. Minick	L. M. Plante, <i>Alternate</i>
H. B. Prasse	D. W. Stepp, <i>Alternate</i>
T. E. Quaka	E. A. Whittle, <i>Alternate</i>
D. M. Vickery	H. L. Wiger, <i>Alternate</i>
C. S. Withers	
M. F. Sullivan, <i>Contributing Member</i>	

COMMITTEE ON SAFETY VALVE REQUIREMENTS (BPV-SVR)

J. A. West, <i>Chair</i>	S. F. Harrison, Jr.
D. B. DeMichael, <i>Vice Chair</i>	W. F. Hart
C. E. O'Brien, <i>Staff Secretary</i>	D. Miller
J. F. Ball	D. K. Parrish
S. Cammeresi	T. Patel
J. A. Cox	D. J. Scallan
R. D. Danzy	T. R. Tarbay
R. J. Doelling	Z. Wang
J. P. Glaspie	

Subgroup on Design (BPV-SVR)

R. D. Danzy, <i>Chair</i>	D. Miller
C. E. Bear	T. Patel
J. A. Conley	T. R. Tarbay
R. J. Doelling	J. A. West

Subgroup on General Requirements (BPV-SVR)

D. B. DeMichael, <i>Chair</i>	B. F. Pittel
J. F. Ball	J. W. Ramsey
G. Brazier	J. W. Richardson
J. P. Glaspie	D. E. Tuttle
D. K. Parrish	S. T. French, <i>Alternate</i>

Subgroup on Testing (BPV-SVR)

J. A. Cox, <i>Chair</i>	B. K. Nutter
J. E. Britt	D. J. Scallan
S. Cammeresi	C. Sharpe
G. D. Goodson	Z. Wang
W. F. Hart	

U.S. Technical Advisory Group ISO/TC 185 Safety Relief Valves

T. J. Bevilacqua, <i>Chair</i>	D. B. DeMichael
C. E. O'Brien, <i>Staff Secretary</i>	D. Miller
J. F. Ball	B. K. Nutter
G. Brazier	J. A. West



SUMMARY OF CHANGES

The 2011 Code, which includes Addenda changes, is being issued in its entirety. While the pages of the Code are printed in loose-leaf format for the users' convenience, it is advisable that the existing 2010 pages be retained for reference. The next Edition of the Code will be published in 2013.

A Special Notice may be posted on the ASME Web site in advance of the next edition of the Boiler and Pressure Vessel Code to provide approved revisions to Code requirements. Such revisions may be used on the date posted and will become mandatory 6 months after the date of issuance in the next edition. A Special Notice may also include a revision to a Code Case. The superseded version of the Code Case shall not be used.

Errata to the BPV Code may be posted on the ASME Web site to provide corrections to incorrectly published items, or to correct typographical or grammatical errors in BPV Codes. Such errata shall be used on the date posted.

Information regarding Special Notices and Errata is published on the ASME Web site under the Boiler and Pressure Vessel Code Resources Page at <http://www.asme.org/kb/standards/publications/bpvc-resources/>.

Changes in this Addenda, given below, are identified on the pages by a margin note, **(a)**, placed next to the affected area, except that in stress tables, changes affecting the table, columns, or a large number of lines are identified by †. Revisions to the 2010 Edition are indicated by **(10)** or **#**. For the listing below, the *Page* references the affected area. A margin note, **(a)** or †, placed next to the heading indicates *Location*. Revisions are listed under *Change*.

The Record Numbers listed below are explained in more detail in "List of Changes in Record Number Order" following the Summary of Changes.

<i>Page</i>	<i>Location</i>	<i>Change (Record Number)</i>
x, xi	Foreword	Tenth and fourteenth paragraphs revised
xii	Statement of Policy on the Use of the Certification Mark and Code Authorization in Advertising	Revised
	Statement of Policy on the Use of ASME Marking to Identify Manufactured Items	Revised
xiii, xiv	Submittal of Technical Inquiries to the Boiler and Pressure Vessel Committee — Mandatory	Moved from Mandatory Appendix 4 and revised
xv–xxvii	Personnel	Updated
3	2.3	Revised (10-63)
14–17	Table 1A, Line 20	For Section I and Section VIII, Division 1, Carbon steel SA/AS 1548 7-430A deleted (08-1531)
	Table 1A, Line 21	For I and VIII-1, for SA/AS 1548 PT430N, Grade and Group No. revised (08-1531)



<i>Page</i>	<i>Location</i>	<i>Change (Record Number)</i>
	Table 1A, Line 22	For I and VIII-1, for SA/AS 1548 PT430NR, Grade, Condition, Size/Thickness, and Group No. revised (08-1531)
	Table 1A, Line 38	For I and VIII-1, SA/AS 1548 7-460A deleted (08-1531)
	Table 1A, Line 39	For I and VIII-1, for SA/AS 1548 PT460N, Grade and Group No. revised (08-1531)
	Table 1A, Line 40	For I and VIII-1, for SA/AS 1548 PT460NR, Grade, Condition, Size/Thickness, and Group No. revised (08-1531)
18–21	Table 1A, Line 34	For VIII-1 and Section XII, for SA-537 Class 3, Note G21 deleted (10-825)
	Table 1A, Lines 42 & 43	For Sections III, VIII-1, and XII, for SA-537 Class 2 and SA-738 C, Note 21 deleted (10-825)
22–25	Table 1A, Line 5	For VIII-1, SA-841 A added (09-1349)
	Table 1A, Lines 6–8	For I and VIII-1, SA/AS 1548 7-490A, 7-490N, and 7-490R deleted (08-1531)
	Table 1A, Line 26	For III, VIII-1, and XII, for SA-738 C, Note G21 deleted (10-825)
	Table 1A, Line 36	For VIII-1, SA-841 B added (09-1349)
	Table 1A, Line 39	For III, VIII-1, and XII, for SA-738 B, Note G20 deleted (10-825)
26–29	Table 1A, Line 1	For III, VIII-1, and XII, for C–Mn–Si–Cb SA-737 B, Note G19 deleted (10-825)
	Table 1A, Line 2	For I, SA/AS 1548 5-490A deleted (08-1531)
	Table 1A, Line 3	(1) For I, for SA/AS 1548 PT490N, Grade revised (08-1531) (2) For VIII-1, SA/AS 1548 PT490N added (08-1531)
	Table 1A, Line 4	For I and VIII-1, SA/AS 1548 PT490NR added (08-1531)
	Table 1A, Line 5	For III, VIII-1, and XII, for C–Mn–Si–V SA-737 C, Note G20 deleted (10-825)
46–49	Table 1A, Line 21	For VIII-1, for 17Cr–4Ni–3Cu SA-747 CB7Cu-1, External Pressure Chart No. revised (09-935)
	Table 1A, Line 22	For III and VIII-1, for 17Cr–4Ni–4Cu SA-564 630 H1150, External Pressure Chart No. revised (09-935)
	Table 1A, Lines 23 & 24	For III, for SA-693 630 H1150 and SA-705 630 H1150, External Pressure Chart No. revised (09-935)
	Table 1A, Line 25	For III and VIII-1, for SA-564 630 H1100, External Pressure Chart No. revised (09-935)
	Table 1A, Lines 26–30	For III, for SA-693 630 H1100 and H1075, SA-705 630 H1100 and H1075, and SA-564 630 H1075, External Pressure Chart No. revised (09-935)
70–73	Table 1A, Lines 14 & 17	For VIII-1, 16Cr–12Ni–2Mo SA-451 CPF3M and CPF8M added (10-387)
102–105	Table 1A, Lines 12–15	For VIII-1, 18Cr–10Ni–Cb SA-213 TP347LN and SA-312 TP347LN added (10-794)
146	Table 1A	Notes G19, G20, and G21 deleted (10-825)
178–181	Table 1B, Line 23	For III and VIII-1, for C12200 H55 SB-359, Min. Tensile Strength, Min. Yield Strength, External Pressure Chart No., Notes, and stress values revised (10-478)



<i>Page</i>	<i>Location</i>	<i>Change (Record Number)</i>
	Table 1B, Line 42	For I, III, VIII-1, and XII, for C23000 H58 SB-43, Note G7 deleted (10-827)
	Table 1B, Line 44	For III, VIII-1, and XII, for O60 SB-135, Note G7 deleted (10-827)
182–185	Table 1B, Line 1	For I, III, VIII-1, and XII, for O61 SB-43, Note G7 deleted (10-827)
	Table 1B, Lines 2 & 3	For III, VIII-1, and XII, for O61 SB-111 and SB-395, Note G7 deleted (10-827)
268–322	Table 2A	Title revised (10-63)
276–278	Table 2A, Line 14	Carbon steel SA-738 B added (10-63)
288–290	Table 2A, Lines 11–19	For 17Cr–4Ni–4Cu SA-564 630, SA-693 630, and SA-705 630, External Pressure Chart No. revised (09-935)
380–383	Table 5A, Lines 20 & 34	Carbon steel SA-841 A and B added (09-1349)
462, 463	Table U, Line 40	For Carbon steel SA/AS 1548 PT430, Grade revised (08-1531)
464, 465	Table U, Line 10	For SA/AS 1548 PT460, Grade revised (08-1531)
466, 467	Table U, Line 9	SA-841 A added (09-1349)
	Table U, Line 10	SA/AS 1548 7-490 deleted (08-1531)
	Table U, Line 38	SA-841 B added (09-1349)
468, 469	Table U, Line 11	For C–Mn–Si–Cb SA/AS 1548 PT490, Grade revised (08-1531)
496, 497	Table U, Lines 29 & 30	18Cr–10Ni–Cb SA-213 TP347LN and SA-312 TP347LN added (10-794)
510, 511	Table U, Line 23	For C12200 H55 SB-359, Min. Tensile Strength and tensile strength values revised (10-478)
540–543	Table Y-1, Lines 43–46	For Carbon steel SA/AS 1548 PT430, Grade revised (08-1531)
544–547	Table Y-1, Lines 16, 17, 20 & 22	For SA/AS 1548 PT460, Grade revised (08-1531)
548–551	Table Y-1, Line 22	SA-841 A added (09-1349)
	Table Y-1, Lines 23–26	SA/AS 1548 7-490 deleted (08-1531)
552–555	Table Y-1, Line 10	SA-841 B added (09-1349)
	Table Y-1, Lines 39–42	For C–Mn–Si–Cb SA/AS 1548 PT490, Grade revised (08-1531)
620–623	Table Y-1, Lines 6 & 7	18Cr–10Ni–Cb SA-213 TP347LN and SA-312 TP347LN added (10-794)
652–655	Table Y-1, Line 33	For C12200 H55 SB-359, Min. Tensile Strength, Min. Yield Strength, and yield strength values revised (10-478)
770	Fig. NFC-7	(1) Values for E deleted (07-1193) (2) General Note (b) added (07-1193)
814	Table NFC-7	Three values added for B = 0.100 +04 (07-1193)
852	Mandatory Appendix 4	Moved to the front matter and revised



LIST OF CHANGES IN RECORD NUMBER ORDER

Record Number	Change
07-1193	<ul style="list-style-type: none"> -Deleted E (modulus) from Fig. NFC-7. -Added General Note (b) to Fig. NFC-7.
08-1531	<ul style="list-style-type: none"> -Added tabular values for A to Table NFC-7 where B = 1,000 psi. -Deleted Grade 7-490 for SA/AS 1548. -Deleted all other grades with "A" designation. -Corrected Group No. for Grades PT430 and PT460, to be consistent with Section IX, Table QW/QB-422. -Increased the maximum thickness for normalized rolled (NR) plates to 6 in. from 1½ in. for as-rolled plates. -Changed Applicability column for Grade PT490N from NP to 1000°F for Section VIII, Division 1 use. -Added Grade PT490NR for Sections I and VIII, Division 1 use.
09-935	EPC reassigned from HA-7 to HT-1 for UNS S17400 in Tables 1A and 2A.
09-1349	Added SA-841, Grade A Class 1 and Grade B Class 2 to Tables 1A, 5A, U, and Y-1.
10-63	<ul style="list-style-type: none"> -Added SA-738 Grade B to Table 2A. -Added the designation "MC" to the title of Table 2A.
10-387	Incorporation of SA-451 J92800 (CPF3M) and J92900 (CPF8M) from Code Case 2456.
10-478	<ul style="list-style-type: none"> -In Table 1B, revised minimum tensile strength from 30 ksi to 36 ksi and minimum yield strength from 9 ksi to 30 ksi, to be consistent with H55 temper values listed in SB-359. -Revised allowable stress values to be the same as those listed for H55 SB-111 seamless tube. -Revised the EPC to NFC-6. -Corrected the Notes in Table 1B. -Tensile and yield strength values corrected in Tables U and Y-1.
10-794	Revised Tables 1A, U, and Y-1 to incorporate SA-213 TP347LN and SA-312 TP347LN, S34751.
10-825	Deleted Notes G19, G20, and G21 from Table 1A.
10-827	Deleted references to Note G7 in Table 1B for five C23000 stress lines.

