

AMERICAN NATIONAL STANDARD

SAMPLING PROCEDURES AND TABLES FOR INSPECTION BY VARIABLES FOR PERCENT NONCONFORMING



AMERICAN SOCIETY FOR QUALITY
600 NORTH PLANKINTON AVENUE
MILWAUKEE, WISCONSIN 53201

AMERICAN NATIONAL STANDARD

SAMPLING PROCEDURES AND TABLES FOR INSPECTION BY VARIABLES FOR PERCENT NONCONFORMING

PREPARED BY
ACCREDITED STANDARDS COMMITTEE
Z1 SUBCOMMITTEE ON STATISTICS

SPONSOR AND SECRETARIAT
AMERICAN SOCIETY FOR QUALITY

ABSTRACT

Sampling Procedures and Tables for Inspection by Variables for Percent Nonconforming is an acceptance sampling system to be used on a continuing stream of lots for AQL specified. It provides tightened, normal, and reduced plans to be used on measurements which are normally distributed. Variation may be measured by sample standard deviation, sample range, or known standard deviation. It is applicable only when the normality of the measurements is assured.

AMERICAN NATIONAL STANDARD: An American National Standard implies a consensus of those substantially concerned with its scope and provisions. An American National Standard is intended as a guide to aid the manufacturer, the consumer, and the general public. The existence of an American National Standard does not in any respect preclude anyone, whether he has approved the standard or not, from manufacturing, marketing, purchasing, or using products, processes, or procedures not conforming to the standard. American National Standards are subject to periodic review and users are cautioned to obtain the latest edition.

CAUTION NOTICE: This American National Standard may be revised or withdrawn at any time. The procedures of the American National Standards Institute require that action be taken to reaffirm, revise, or withdraw this standard no later than five years from the date of publication. Purchasers of American National Standards may receive current information on all standards by calling or writing the American National Standards Institute.

©2003 by ASQ

Copyright protection notice for the ANSI/ASQ Z1.9-2003 Standard.

This Standard is subject to copyright claims of ANSI, and ASQ. Not for resale. No part of this publication may be reproduced in any form, including an electronic retrieval system, without the prior written permission of ASQ. All requests pertaining to the ANSI/ASQ Z1.9-2003 Standard should be submitted to ASQ.

ASQ will consider requests for change and information on the submittal of such requests regarding this Standard. All requests should be in writing to the attention of the Standards Administrator at the address below.

ASQ Mission: The American Society for Quality advances individual and organizational performance excellence worldwide by providing opportunities for learning, quality improvement, and knowledge exchange.

Published by:



Quality Press
600 N. Plankinton Avenue
Milwaukee, Wisconsin 53203
Call toll free 800-248-1946
Fax 414-272-1734
www.asq.org
<http://qualitypress.asq.org>
<http://standardsgroup.asq.org>
E-mail: authors@asq.org

FOREWORD

(This foreword is not a part of Draft American National Standard—Sampling Procedures and Tables for Inspection by Variables for Percent Nonconforming, ANSI/ASQ Z1.9-2003)

This revision of ANSI/ASQC Z1.9-1993, “Sampling Procedures and Tables for Inspection by Variables for Percent Nonconforming” was undertaken to allow for aligning the terminology of the standard with the terms of ANSI/ISO/ASQ A3534-2-2004 (to be published), change the term Acceptable Quality Level (AQL) to Acceptance Quality Limit (AQL), change the definition and explanation of AQL, change the Discontinuation of Inspection Rule, and to correct typographical and computational errors within the standard.

The present revision ANSI/ASQ Z1.9-2003 continues to allow complete interchangeability of the tabulated plans with ISO 3951-1, which provided a graphical means for implementation of the plans. ANSI/ASQ Z1.9-2003 is also roughly matched to ANSI/ASQ Z1.4-2003, which corresponds directly to the old military standard MIL-STD-105E. The matching is sufficient to allow inspection under either standard for stated AQLs and inspection levels with reasonably equivalent protection. Tables are given in Section E—Appendix that show differences in protection between ANSI/ASQ Z1.9-2003 and ANSI/ASQ Z1.4-2003. These are for use in critical applications to determine whether moving from one standard to the other is appropriate.

Committee members serving as writers and editors of this standard were:

Herbert C. Monnich, Jr., Chairperson
William C. Davis
Rudolf G. Kittlitz, Jr.
Paul Roediger
Edward G. Schilling

(This page intentionally left blank)

CONTENTS

	Page
INTRODUCTION	vii
SECTION A GENERAL DESCRIPTION OF SAMPLING PLANS	1
Tables:	
Table A-1 AQL Conversion Table	5
Table A-2 Sample Size Code Letters	6
Table A-3 Operating Characteristic Curves for Sampling Plans of Sections B, C, and D (Graphs for Sample Size Code Letters B through P)	6
SECTION B VARIABILITY UNKNOWN—STANDARD DEVIATION METHOD	32
Part I SINGLE SPECIFICATION LIMIT	32
Examples:	
Example B-1 Example of Calculations: Single Specification Limit—Form 1	34
Example B-2 Example of Calculations: Single Specification Limit—Form 2	35
Tables:	
Table B-1 Master Table for Normal and Tightened Inspection (Single Specification Limit—Form 1)	36
Table B-2 Master Table for Reduced Inspection (Single Specification Limit—Form 1)	37
Part II DOUBLE SPECIFICATION LIMIT	38
Examples:	
Example B-3 Example of Calculations: Double Specification Limit—One AQL Value for Both Upper and Lower Specification Limit Combined	40
Example B-4 Example of Calculations: Double Specification Limit— Different AQL Values for Upper and Lower Specification Limits	41
Tables:	
Table B-3 Master Table for Normal and Tightened Inspection (Double Specification Limit and Form 2—Single Specification Limit)	42
Table B-4 Master Table for Reduced Inspection (Double Specification Limit and Form 2—Single Specification Limit)	43
Table B-5 Table for Estimating the Lot Percent Nonconforming	44
Table B-6 Values of F for Maximum Standard Deviation (MSD)	53
Appendix B Definitions	54
SECTION C VARIABILITY UNKNOWN—RANGE METHOD	55
Part I SINGLE SPECIFICATION LIMIT	55
Examples:	
Example C-1 Example of Calculations: Single Specification Limit—Form I	58
Example C-2 Example of Calculations: Single Specification Limit—Form 2	59
Tables:	
Table C-1 Master Table for Normal and Tightened Inspection (Single Specification Limit—Form I)	60
Table C-2 Master Table for Reduced Inspection (Single Specification Limit—Form I)	61
Part II DOUBLE SPECIFICATION LIMIT	62

	Page
Examples:	
Example C-3	Example of Calculations: Double Specification Limit—One AQL Value for Both Upper and Lower Specification Limit Combined. 65
Example C-4	Example of Calculations: Double Specification Limit—Different AQL Value for Upper and Lower Specification Limits. 66
Tables:	
Table C-3	Master Table for Normal and Tightened Inspection (Double Specification Limit and Form 2—Single Specification Limit) 67
Table C-4	Master Table for Reduced Inspection (Double Specification Limit and Form 2—Single Specification Limit) 68
Table C-5	Table for Estimating the Lot Percent Nonconforming 69
Table C-6	Values of <i>f</i> for Maximum Average Range (MAR) 78
Appendix C	Definitions 79
SECTION D	VARIABILITY KNOWN. 80
Part I	SINGLE SPECIFICATION LIMIT. 80
Examples:	
Example D-1	Example of Calculations: Single Specification Limit—Form 1 82
Example D-2	Example of Calculations: Single Specification Limit—Form 2 83
Tables:	
Table D- 1	Master Table for Normal and Tightened Inspection (Single Specification Limit—Form 1) 84
Table D-2	Master Table for Reduced Inspection (Single Specification Limit—Form 1) 86
Part II	DOUBLE SPECIFICATION LIMIT. 88
Examples:	
Example D-3A	Example of Calculations: Double Specification Limit—One AQL Value for Both Upper and Lower Specification Limit Combined. 90
Example D-3B	Example of Calculations: Double Specification Limit—One AQL Value for Both Upper and Lower Specification Limit Combined. 91
Example D-4	Example of Calculations: Double Specification Limit—Different AQL Values for Upper and Lower Specification Limits. 92
Tables:	
Table D-3	Master Table for Normal and Tightened Inspection (Double Specification Limit and Form 2—Single Specification Limit) 93
Table D-4	Master Table for Reduced Inspection (Double Specification Limit and Form 2—Single Specification Limit) 95
Table D-5	Table for Estimating the Lot Percentage Nonconforming 97
Table D-6	Value of <i>F</i> σ for Maximum Process Standard Deviation 98
Appendix D	Definitions 99
SECTION E	APPENDIX—MATCH WITH ANSI/ASQ Z1.4-2003 100
Tables:	
1	Matching Code Letters and ANSI/ASQC Z1.9-2003 Sample Size. 101
2	ANSI/ASQC Z1.9-2003 Percentage Points in Terms of Percent Nonconforming 102
3	ANSI/ASQ Z1.4-2003 (MIL-STD-105) Percentage Points in Terms of Percent Nonconforming 103
4	Difference in Percentage Points—ANSI/ASQC Z1.9-2003 Minus ANSI/ASQ Z1.4-2003 (MIL-STD-105) 104

INTRODUCTION

This standard was prepared to meet a need for the use of standard sampling plans for inspection by variables in procurement, supply and storage, and maintenance inspection operations. The variables sampling plans apply to a single quality characteristic which can be measured on a continuous scale, and for which quality is expressed in terms of percent nonconforming. The theory underlying the development of the variables sampling plans, including the operating characteristic curves, assumes that measurements of the quality characteristics are independent, identically normally distributed random variables.

It is important to note that variables sampling plans are not to be used indiscriminately, simply because it is possible to obtain variables measurement data. The users are advised to consult their technical agency to determine the feasibility of application in considering applications where the normality or independence assumptions may be questioned.

In comparison with attributes sampling plans, variables sampling plans have the advantage of usually resulting in considerable savings in sample size for comparable assurance as to the correctness of decisions in judging a single quality characteristic, or for the same sample size, greater assurance is obtained using variables plans. Attributes sampling plans have the advantage of greater simplicity, of being applicable to either single or multiple quality characteristics, and of requiring no knowledge about the distribution of the continuous measurements of any of the quality characteristics.

This standard is divided into four sections. Section A describes general procedures of the sampling plans. Sections B and C describe specific procedures and applications of the sampling plans when variability is unknown. In Section B the standard deviation is used as the basis for an estimate of the unknown variability, and in Section C the average range of the sample is used. Section D describes the plans when variability is known.

Each of Sections B, C, and D is divided into two parts: (I) Sampling Plans for the Single Specification Limit Case, and (II) Sampling Plans for the Double Specification Limit Case. For the single specification limit case, the acceptability criterion is given in two forms: Form 1 and Form 2. Either of the forms may be used, since they are identical as to sample size and decision for lot acceptability or rejectability. In deciding whether to use Form 1 or Form 2, the following points should be borne in mind. Form 1 provides the lot acceptability criterion without estimating lot percent nonconforming. The Form 2 lot acceptability criterion requires estimates of lot percent nonconforming.

Operating characteristic curves in Table A-3 are for the Normal Inspection sampling plans and show the relationship between quality and percent of lots expected to be accepted for the quality characteristic inspected. As stated, these operating characteristic curves are based on the assumption that measurements are selected at random from a normal distribution.

The corresponding sampling plans in Sections B, C, and D were matched as closely as possible under a system of fixed sample size with respect to their operating characteristic curves. Operating characteristic curves in Table A-3 have been computed for the sampling plans based on the standard deviation estimate of unknown variability. They are equally applicable for sampling plans based on the average range of the sample and those based on known variability.

Certain characteristics concerning the sampling plans in Section B and C and those in Section D should be noted. Plans based on the estimate of unknown variability require fewer sample units for comparable assurance when the standard deviation is used than when the average range of the sample is used. On the other hand, plans using the average range of the sample require simpler computations and may be better understood by operating personnel. Plans using known variability require considerably fewer sample units for comparable assurance than either of the plans of unknown variability; however, the requirement of known variability is a stringent one. The user is well advised to consult a statistician before applying sampling plans using known variability.

Table B-6 provides values of the factor F to compute the maximum standard deviation: MSD. The MSD serves as a guide for the maximum allowable magnitude of the estimate of lot standard deviation when using plans for the double specification limit case, based on the standard deviation. Similarly Table C-6 provides values of the factor f to compute the maximum average range: MAR. The MAR serves as a guide for the maximum allowable magnitude of the average range of the sample when using plans for the double specification limit case, based on the average range. The estimate of lot standard deviation or average range of the sample, if it is less than the MSD or MAR, respectively, helps to ensure, but does not guarantee, lot acceptability.

All symbols and their definitions are given in the appendix of the applicable section. An illustration of the computations and procedures used in the sampling plans is given in the examples in Parts I and II of the applicable section. The computations involve simple arithmetic operations such as addition, subtraction, multiplication, and division of numbers, or at most, the taking of a square root of a number. The user should become familiar with the general procedures of Section A, and refer to the applicable section for detailed instructions regarding specific procedures, computations, and tables for the sampling plans.

Section E—Appendix provides information about the match between this variables standard, ANSI/ASQ Z1.9-2003, and the corresponding attributes standard, ANSI/ASQ Z1.4-2003.

The flowchart in Figure 1 shows the basic procedure for using the standard.

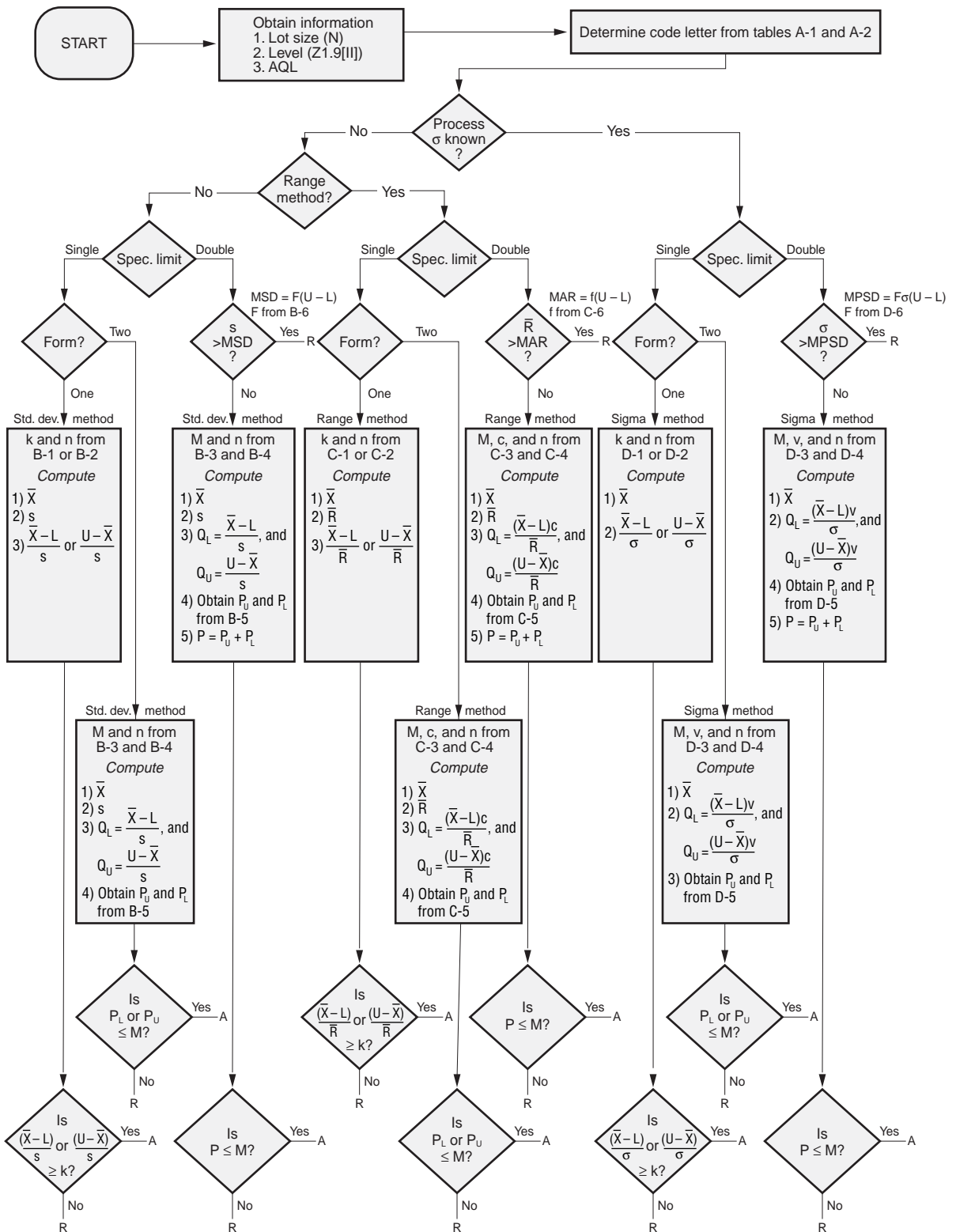


Figure 1 Flowchart for use of ANSI/ASQ Z1.9-2003.

(This page intentionally left blank)

SECTION A

GENERAL DESCRIPTION OF SAMPLING PLANS

A1. SCOPE

A1.1 Purpose. This standard establishes sampling plans and procedures for inspection by variables for use in procurement, supply and storage, and maintenance inspection operations. When applicable this standard shall be referenced in the specification, contract, or inspection instructions, and the provisions set forth herein shall govern.

These acceptance sampling plans for variables are given in terms of the percent or proportion of product in a lot or batch that depart from some requirement. The general terminology used within the document will be given in terms of percent of nonconforming units or number of nonconformities, since these terms are likely to constitute the most widely used criteria for acceptance sampling.

A2. DEFINITIONS AND TERMINOLOGY

For the purpose of this American National Standard, the definitions given in ANSI/ISO/ASQ A3534-2-2004 (to be published) and the following definitions apply. The definitions and terminology employed in this standard are in accord with ANSI/ISO/ASQ A3534-2-2004 (to be published) *Statistics—Vocabulary and symbols—Part 2: Applied Statistics*. Definitions quoted from ANSI/ISO/ASQ A3534-2-2004 (to be published) reference the clause number of that standard.

A2.1 Acceptance Quality Limit (AQL): The AQL is the quality level that is the worst tolerable product average when a continuing series of lots is submitted for acceptance sampling.

NOTE

The use of the abbreviation AQL to mean Acceptable Quality Level is no longer recommended.

A2.2 Defect: Nonfulfillment of a requirement related to an intended or specified use [ISO 9000]. (See ANSI/ISO/ASQ A3534-2-2004 [to be published] 1.3.1.12)

NOTE 1

The distinction between the concepts defect and nonconformity is important as it has legal connotations, particularly those associated with product liability issues. Consequently the term defect should be used with extreme caution.

NOTE 2

The intended use by the customer can be affected by the nature of the information, such as operating or maintenance instructions, provided by the customer.

A2.3 Inspection by Variables: Inspection by measuring the magnitude(s) of the characteristic(s) of an item. (See ANSI/ISO/ASQ A3534-2-2004 [to be published] 1.4.1.4)

A2.4 Lot Size: The number of items in a lot.

A2.5 Mixed Variables-Attributes Inspection: Mixed variables-attributes inspection is inspection of a sample by attributes, in addition to inspection by variables already made of a previous sample from the lot, before a decision as to acceptability or rejectability of a lot can be made.

A2.6 Nonconformity: Nonfulfillment of a requirement [ISO 9000]. (See ANSI/ISO/ASQ A3534-2-2004 [to be published] 1.3.1.11)

NOTE

See notes to defect (A2.2)

A2.7 Sampling Plan: A specific plan which states the sample size(s) to be used and the associated criteria for accepting the lot.

NOTE

The sampling plan does not contain the rules on how to take the sample.

A2.8 Sampling Scheme: A combination of sampling plans with rules for changing from one plan to another.