

AN INTERNATIONAL CODE

2007 ASME Boiler & Pressure Vessel Code

2007 Edition

July 1, 2007

II

Part A

Ferrous Material Specifications (Beginning to SA-450)

MATERIALS

ASME Boiler and Pressure Vessel Committee
Subcommittee on Materials



The American Society of
Mechanical Engineers



Date of Issuance: July 1, 2007
(Includes all Addenda dated July 2006 and earlier)

This international code or standard was developed under procedures accredited as meeting the criteria for American National Standards and it is an American National Standard. The Standards Committee that approved the code or standard was balanced to assure that individuals from competent and concerned interests have had an opportunity to participate. The proposed code or standard was made available for public review and comment that provides an opportunity for additional public input from industry, academia, regulatory agencies, and the public-at-large.

ASME does not “approve,” “rate,” or “endorse” any item, construction, proprietary device, or activity.

ASME does not take any position with respect to the validity of any patent rights asserted in connection with any items mentioned in this document, and does not undertake to insure anyone utilizing a standard against liability for infringement of any applicable letters patent, nor assume any such liability. Users of a code or standard are expressly advised that determination of the validity of any such patent rights, and the risk of infringement of such rights, is entirely their own responsibility.

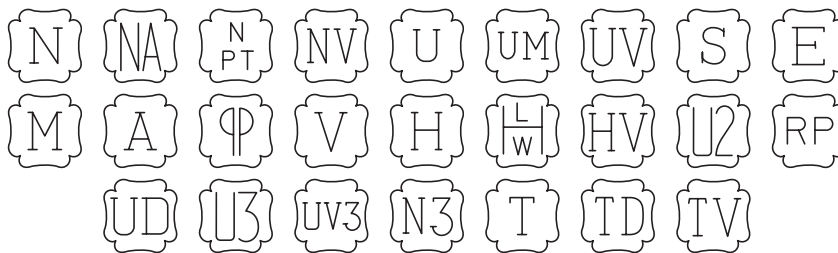
Participation by federal agency representative(s) or person(s) affiliated with industry is not to be interpreted as government or industry endorsement of this code or standard.

ASME accepts responsibility for only those interpretations of this document issued in accordance with the established ASME procedures and policies, which precludes the issuance of interpretations by individuals.

The footnotes in this document are part of this American National Standard.



ASME collective membership mark



The above ASME symbols are registered in the U.S. Patent Office.

“ASME” is the trademark of the American Society of Mechanical Engineers.

The Specifications published and copyrighted by the American Society for Testing and Materials are reproduced with the Society’s permission.

No part of this document may be reproduced in any form, in an electronic retrieval system or otherwise, without the prior written permission of the publisher.

Library of Congress Catalog Card Number: 56-3934
Printed in the United States of America

Adopted by the Council of the American Society of Mechanical Engineers, 1914.
Revised 1940, 1941, 1943, 1946, 1949, 1952, 1953, 1956, 1959, 1962, 1965, 1968, 1971, 1974, 1977, 1980, 1983, 1986, 1989, 1992, 1995, 1998, 2001, 2004, 2007

The American Society of Mechanical Engineers
Three Park Avenue, New York, NY 10016-5990

Copyright © 2007 by
THE AMERICAN SOCIETY OF MECHANICAL ENGINEERS
All Rights Reserved

2007 ASME

BOILER AND PRESSURE VESSEL CODE

SECTIONS

- I Rules for Construction of Power Boilers
- II Materials
 - Part A — Ferrous Material Specifications
 - Part B — Nonferrous Material Specifications
 - Part C — Specifications for Welding Rods, Electrodes, and Filler Metals
 - Part D — Properties (Customary)
 - Part D — Properties (Metric)
- III Rules for Construction of Nuclear Facility Components
 - Subsection NCA — General Requirements for Division 1 and Division 2
 - Division 1
 - Subsection NB — Class 1 Components
 - Subsection NC — Class 2 Components
 - Subsection ND — Class 3 Components
 - Subsection NE — Class MC Components
 - Subsection NF — Supports
 - Subsection NG — Core Support Structures
 - Subsection NH — Class 1 Components in Elevated Temperature Service
 - Appendices
 - Division 2 — Code for Concrete Containments
 - Division 3 — Containments for Transportation and Storage of Spent Nuclear Fuel and High Level Radioactive Material and Waste
- IV Rules for Construction of Heating Boilers
- V Nondestructive Examination
- VI Recommended Rules for the Care and Operation of Heating Boilers
- VII Recommended Guidelines for the Care of Power Boilers
- VIII Rules for Construction of Pressure Vessels
 - Division 1
 - Division 2 — Alternative Rules
 - Division 3 — Alternative Rules for Construction of High Pressure Vessels
- IX Welding and Brazing Qualifications
- X Fiber-Reinforced Plastic Pressure Vessels
- XI Rules for Inservice Inspection of Nuclear Power Plant Components
- XII Rules for Construction and Continued Service of Transport Tanks

ADDENDA

Colored-sheet Addenda, which include additions and revisions to individual Sections of the Code, are published annually and will be sent automatically to purchasers of the applicable Sections up to the publication of the 2010 Code. The 2007 Code is available only in the loose-leaf format; accordingly, the Addenda will be issued in the loose-leaf, replacement-page format.

INTERPRETATIONS

ASME issues written replies to inquiries concerning interpretation of technical aspects of the Code. The Interpretations for each individual Section will be published separately and will be included as part of the update service to that Section. Interpretations of Section III, Divisions 1 and 2, will be included with the update service to Subsection NCA.

Interpretations of the Code are distributed annually in July with the issuance of the edition and subsequent addenda. Interpretations posted in January at www.cstools.asme.org/interpretations are included in the July distribution.

CODE CASES

The Boiler and Pressure Vessel Committee meets regularly to consider proposed additions and revisions to the Code and to formulate Cases to clarify the intent of existing requirements or provide, when the need is urgent, rules for materials or constructions not covered by existing Code rules. Those Cases that have been adopted will appear in the appropriate 2007 Code Cases book: “Boilers and Pressure Vessels” and “Nuclear Components.” Supplements will be sent automatically to the purchasers of the Code Cases books up to the publication of the 2010 Code.

CONTENTS

| | |
|---|-------|
| Foreword | ix |
| Statements of Policy | xiii |
| Personnel | xv |
| ASTM Personnel | xxvii |
| Preface | xxix |
| Specifications Listed by Materials | xxxi |
| Specification Removal | xxxix |
| Guidelines on Submittal of Technical Inquiries to the Boiler and Pressure Vessel Committee | xli |
| Guideline on the Approval of New Materials Under the ASME Boiler and Pressure Vessel Code | xliii |
| Guideline on Acceptable ASTM Editions | xlvii |
| Guideline on Acceptable Non-ASTM Editions | lvii |
| Guidelines on Multiple Marking of Materials | lix |
| Summary of Changes | lxi |
| List of Changes in BC Order | lxii |

Specifications

| | | |
|----------------|---|-----|
| SA-6/SA-6M | General Requirements for Rolled Structural Steel Bars, Plates, Shapes, and Sheet Piling | 1 |
| SA-20/SA-20M | General Requirements for Steel Plates for Pressure Vessels | 83 |
| SA-29/SA-29M | General Requirements for Steel Bars, Carbon and Alloy, Hot-Wrought and Cold-Finished | 127 |
| SA-31 | Steel Rivets and Bars for Rivets, Pressure Vessels | 153 |
| SA-36/SA-36M | Carbon Structural Steel | 157 |
| SA-47/SA-47M | Ferritic Malleable Iron Castings | 163 |
| SA-53/SA-53M | Pipe, Steel, Black and Hot-Dipped, Zinc-Coated, Welded and Seamless | 171 |
| SA-105/SA-105M | Carbon Steel Forgings for Piping Applications | 199 |
| SA-106 | Seamless Carbon Steel Pipe for High-Temperature Service | 205 |
| SA-134 | Pipe, Steel, Electric-Fusion (Arc)-Welded (Sizes NPS 16 and Over) | 221 |
| SA-135 | Electric-Resistance-Welded Steel Pipe | 227 |
| SA-178/SA-178M | Electric-Resistance-Welded Carbon Steel and Carbon-Manganese Steel Boiler and Superheater Tubes | 237 |
| SA-179/SA-179M | Seamless Cold-Drawn Low-Carbon Steel Heat Exchanger and Condenser Tubes | 243 |
| SA-181/SA-181M | Carbon Steel Forgings, for General-Purpose Piping | 247 |
| SA-182/SA-182M | Forged or Rolled Alloy and Stainless Steel Pipe Flanges, Forged Fittings, and Valves and Parts for High-Temperature Service | 251 |
| SA-192/SA-192M | Seamless Carbon Steel Boiler Tubes for High-Pressure Service | 271 |
| SA-193/SA-193M | Alloy Steel and Stainless Steel Bolting Materials for High-Temperature Service | 275 |
| SA-194/SA-194M | Carbon and Alloy Steel Nuts for Bolts for High-Pressure or High-Temperature Service, or Both | 293 |
| SA-202/SA-202M | Pressure Vessel Plates, Alloy Steel, Chromium-Manganese-Silicon | 311 |
| SA-203/SA-203M | Pressure Vessel Plates, Alloy Steel, Nickel | 315 |
| SA-204/SA-204M | Pressure Vessel Plates, Alloy Steel, Molybdenum | 319 |

| | | |
|----------------|--|-----|
| SA-209/SA-209M | Seamless Carbon-Molybdenum Alloy-Steel Boiler and Superheater Tubes | 323 |
| SA-210/SA-210M | Seamless Medium-Carbon Steel Boiler and Superheater Tubes | 329 |
| SA-213/SA-213M | Seamless Ferritic and Austenitic Alloy-Steel Boiler, Superheater, and Heat-Exchanger Tubes | 333 |
| SA-214/SA-214M | Electric-Resistance-Welded Carbon Steel Heat-Exchanger and Condenser Tubes | 345 |
| SA-216/SA-216M | Steel Castings, Carbon, Suitable for Fusion Welding for High-Temperature Service | 347 |
| SA-217/SA-217M | Steel Castings, Martensitic Stainless and Alloy, for Pressure-Containing Parts Suitable for High-Temperature Service | 351 |
| SA-225/SA-225M | Pressure Vessel Plates, Alloy Steel, Manganese-Vanadium-Nickel | 357 |
| SA-231/SA-231M | Chromium-Vanadium Alloy Steel Spring Wire | 361 |
| SA-232/SA-232M | Chromium-Vanadium Alloy Steel Valve Spring Quality Wire | 367 |
| SA-234/SA-234M | Piping Fittings of Wrought Carbon Steel and Alloy Steel for Moderate and High-Temperature Service | 371 |
| SA-240/SA-240M | Chromium and Chromium-Nickel Stainless Steel Plate, Sheet, and Strip for Pressure Vessels and for General Applications | 381 |
| SA-249/SA-249M | Welded Austenitic Steel Boiler, Superheater, Heat-Exchanger, and Condenser Tubes | 393 |
| SA-250/SA-250M | Electric-Resistance-Welded Ferritic Alloy-Steel Boiler and Superheater Tubes | 403 |
| SA-263 | Stainless Chromium Steel-Clad Plate | 409 |
| SA-264 | Stainless Chromium-Nickel Steel-Clad Plate | 417 |
| SA-265 | Nickel and Nickel-Base Alloy-Clad Steel Plate | 425 |
| SA-266/SA-266M | Carbon Steel Forgings, for Pressure Vessel Components | 433 |
| SA-268/SA-268M | Seamless and Welded Ferritic and Martensitic Stainless Steel Tubing for General Service | 439 |
| SA-275/SA-275M | Magnetic Particle Examination of Steel Forgings | 449 |
| SA-276 | Stainless Steel Bars and Shapes | 457 |
| SA-278 | Gray Iron Castings for Pressure-Containing Parts for Temperature Up to 650°F | 467 |
| SA-283/SA-283M | Low- and Intermediate Tensile Strength Carbon Steel Plates | 473 |
| SA-285/SA-285M | Pressure Vessel Plates, Carbon Steel, Low- and Intermediate-Tensile Strength | 477 |
| SA-299/SA-299M | Pressure Vessel Plates, Carbon Steel, Manganese-Silicon | 481 |
| SA-302/SA-302M | Pressure Vessel Plates, Alloy Steel, Manganese-Molybdenum and Manganese-Molybdenum-Nickel | 485 |
| SA-307 | Carbon Steel Bolts and Studs, 60 000 psi Tensile Strength | 489 |
| SA-311/SA-311M | Cold-Drawn, Stress-Relieved Carbon Steel Bars Subject to Mechanical Property Requirements | 497 |
| SA-312/SA-312M | Seamless and Welded Austenitic Stainless Steel Pipes | 503 |
| SA-320/SA-320M | Alloy Steel Bolting Materials for Low-Temperature Service | 515 |
| SA-325 | Structural Bolts, Steel, Heat Treated, 120/105 ksi Minimum Tensile Strength | 527 |
| SA-333/SA-333M | Seamless and Welded Steel Pipe for Low-Temperature Service | 539 |
| SA-334/SA-334M | Seamless and Welded Carbon and Alloy Steel Tubes for Low-Temperature Service | 551 |
| SA-335/SA-335M | Seamless Ferritic Alloy-Steel Pipe for High-Temperature Service | 561 |
| SA-336/SA-336M | Alloy Steel Forgings for Pressure and High-Temperature Parts | 575 |
| SA-350/SA-350M | Carbon and Low-Alloy Steel Forgings, Requiring Notch Toughness Testing for Piping Components | 585 |
| SA-351/SA-351M | Castings, Austenitic, Austenitic-Ferritic (Duplex), for Pressure-Containing Parts | 597 |

| | | |
|----------------|--|-----|
| SA-352/SA-352M | Steel Castings, Ferritic and Martensitic, for Pressure Containing Parts, Suitable for Low Temperature Service..... | 605 |
| SA-353/SA-353M | Pressure Vessel Plates, Alloy Steel, 9 Percent Nickel, Double-Normalized and Tempered..... | 613 |
| SA-354 | Quenched and Tempered Alloy Steel Bolts, Studs, and Other Externally Threaded Fasteners..... | 619 |
| SA-358/SA-358M | Electric-Fusion-Welded Austenitic Chromium-Nickel Alloy Steel Pipe for High-Temperature Service..... | 627 |
| SA-369/SA-369M | Carbon and Ferritic Alloy Steel Forged and Bored Pipe for High-Temperature Service..... | 637 |
| SA-370 | Test Methods and Definitions for Mechanical Testing of Steel Products.... | 643 |
| SA-372/SA-372M | Carbon and Alloy Steel Forgings for Thin-Walled Pressure Vessels..... | 701 |
| SA-376/SA-376M | Seamless Austenitic Steel Pipe for High-Temperature Central-Station Service..... | 707 |
| SA-387/SA-387M | Pressure Vessel Plates, Alloy Steel, Chromium-Molybdenum..... | 717 |
| SA-388/SA-388M | Ultrasonic Examination of Heavy Steel Forgings..... | 725 |
| SA-395 | Ferritic Ductile Iron Pressure-Retaining Castings for Use at Elevated Temperatures..... | 735 |
| SA-403/SA-403M | Wrought Austenitic Stainless Steel Piping Fittings..... | 747 |
| SA-409/SA-409M | Welded Large Diameter Austenitic Steel Pipe for Corrosive or High-Temperature Service..... | 759 |
| SA-414/SA-414M | Steel, Sheet, Carbon, for Pressure Vessels..... | 769 |
| SA-420/SA-420M | Piping Fittings of Wrought Carbon Steel and Alloy Steel for Low-Temperature Service..... | 773 |
| SA-423/SA-423M | Seamless and Electric-Welded Low-Alloy Steel Tubes..... | 783 |
| SA-426 | Centrifugally Cast Ferritic Alloy Steel Pipe for High-Temperature Service..... | 789 |
| SA-435/SA-435M | Straight-Beam Ultrasonic Examination of Steel Plates..... | 795 |
| SA-437/SA-437M | Alloy Steel Turbine-Type Bolting Material Specially Heat Treated for High-Temperature Service..... | 799 |
| SA-449 | Quenched and Tempered Steel Bolts and Studs..... | 805 |
| SA-450/SA-450M | General Requirements for Carbon, Ferritic Alloy, and Austenitic Alloy Steel Tubes..... | 813 |
| SA-451 | Centrifugally Cast Austenitic Steel Pipe for High-Temperature Service..... | 825 |
| SA-453/SA-453M | High-Temperature Bolting Materials, With Expansion Coefficients Comparable to Austenitic Steels..... | 831 |
| SA-455/SA-455M | Pressure Vessel Plates, Carbon Steel, High-Strength Manganese..... | 841 |
| SA-476/SA-476M | Ductile Iron Castings for Paper Mill Dryer Rolls..... | 845 |
| SA-479/SA-479M | Stainless Steel Bars and Shapes for Use in Boilers and Other Pressure Vessels..... | 851 |
| SA-480/SA-480M | General Requirements for Flat-Rolled Stainless and Heat-Resisting Steel Plate, Sheet, and Strip..... | 863 |
| SA-484/SA-484M | General Requirements for Stainless Steel Bars, Billets, and Forgings..... | 891 |
| SA-487/SA-487M | Steel Castings Suitable for Pressure Service..... | 907 |
| SA-494/SA-494M | Castings, Nickel and Nickel Alloy..... | 915 |
| SA-508/SA-508M | Quenched and Tempered Vacuum-Treated Carbon and Alloy Steel Forgings for Pressure Vessels..... | 917 |
| SA-513 | Electric-Resistance-Welded Carbon and Alloy Steel Mechanical Tubing.... | 927 |
| SA-515/SA-515M | Pressure Vessel Plates, Carbon Steel, for Intermediate- and Higher-Temperature Service..... | 953 |
| SA-516/SA-516M | Pressure Vessel Plates, Carbon Steel, for Moderate- and Lower-Temperature Service..... | 957 |
| SA-517/SA-517M | Pressure Vessel Plates, Alloy Steel, High Strength, Quenched and Tempered..... | 963 |

| | | |
|----------------|---|------|
| SA-522/SA-522M | Forged or Rolled 8 and 9% Nickel Alloy Steel Flanges, Fittings, Valves, and Parts for Low-Temperature Service | 967 |
| SA-524 | Seamless Carbon Steel Pipe for Atmospheric and Lower Temperatures | 973 |
| SA-530/SA-530M | General Requirements for Specialized Carbon and Alloy Steel Pipe. | 983 |
| SA-533/SA-533M | Pressure Vessel Plates, Alloy Steel, Quenched and Tempered, Manganese-Molybdenum and Manganese-Molybdenum-Nickel. | 993 |
| SA-537/SA-537M | Pressure Vessel Plates, Heat-Treated, Carbon-Manganese-Silicon Steel. . . . | 999 |
| SA-540/SA-540M | Alloy Steel Bolting Materials for Special Applications | 1005 |
| SA-541/SA-541M | Quenched and Tempered Carbon and Alloy Steel Forgings for Pressure Vessel Components. | 1015 |
| SA-542/SA-542M | Pressure Vessel Plates, Alloy Steel, Quenched-and-Tempered, Chromium-Molybdenum and Chromium-Molybdenum-Vanadium | 1023 |
| SA-543/SA-543M | Pressure Vessel Plates, Alloy Steel, Quenched and Tempered, Nickel- Chromium-Molybdenum | 1029 |
| SA-553/SA-553M | Pressure Vessel Plates, Alloy Steel, Quenched and Tempered 8 and 9 Percent Nickel | 1033 |
| SA-556/SA-556M | Seamless Cold-Drawn Carbon Steel Feedwater Heater Tubes | 1039 |
| SA-557/SA-557M | Electric-Resistance-Welded Carbon Steel Feedwater Heater Tubes. | 1045 |
| SA-562/SA-562M | Pressure Vessel Plates, Carbon Steel, Manganese-Titanium for Glass or Diffused Metallic Coatings | 1051 |
| SA-563 | Carbon and Alloy Steel Nuts | 1055 |
| SA-564/SA-564M | Hot-Rolled and Cold-Finished Age-Hardening Stainless Steel Bars and Shapes | 1067 |
| SA-568/SA-568M | Steel, Sheet, Carbon and High-Strength, Low-Alloy, Hot-Rolled and Cold-Rolled, General Requirements for | 1077 |
| SA-572/SA-572M | High-Strength Low-Alloy Columbium-Vanadium Structural Steel. | 1111 |
| SA-574 | Alloy Steel Socket-Head Cap Screws | 1117 |
| SA-577/SA-577M | Ultrasonic Angle-Beam Examination of Steel Plates. | 1125 |
| SA-578/SA-578M | Straight-Beam Ultrasonic Examination of Plain and Clad Steel Plates for Special Applications | 1129 |
| SA-587 | Electric-Resistance-Welded Low-Carbon Steel Pipe for the Chemical Industry | 1135 |
| SA-592/SA-592M | High-Strength Quenched and Tempered Low-Alloy Steel Forged Fittings and Parts for Pressure Vessels. | 1143 |
| SA-609/SA-609M | Castings, Carbon, Low-Alloy, and Martensitic Stainless Steel, Ultrasonic Examination Thereof. | 1147 |
| SA-612/SA-612M | Pressure Vessel Plates, Carbon Steel, High Strength, for Moderate and Lower Temperature Service | 1159 |
| SA-638/SA-638M | Precipitation Hardening Iron Base Superalloy Bars, Forgings, and Forging Stock for High-Temperature Service. | 1163 |
| SA-645/SA-645M | Pressure Vessel Plates, Five Percent Nickel Alloy Steel, Specially Heat Treated. | 1167 |
| SA-649/SA-649M | Forged Steel Rolls, Used for Corrugating Paper Machinery | 1173 |
| SA-660 | Centrifugally Cast Carbon Steel Pipe for High-Temperature Service | 1179 |
| SA-662/SA-662M | Pressure Vessel Plates, Carbon-Manganese-Silicon Steel, for Moderate and Lower Temperature Service | 1185 |
| SA-666 | Annealed or Cold-Worked Austenitic Stainless Steel, Sheet, Strip, Plate, and Flat Bar. | 1191 |
| SA-667/SA-667M | Centrifugally Cast Dual Metal (Gray and White Cast Iron) Cylinders | 1201 |
| SA-671 | Electric-Fusion-Welded Steel Pipe for Atmospheric and Lower Temperatures | 1203 |
| SA-672 | Electric-Fusion-Welded Steel Pipe for High-Pressure Service at Moderate Temperatures | 1213 |

| | | |
|----------------|---|------|
| SA-675/SA-675M | Steel Bars, Carbon, Hot-Wrought, Special Quality, Mechanical Properties | 1221 |
| SA-688/SA-688M | Welded Austenitic Stainless Steel Feedwater Heater Tubes | 1227 |
| SA-691 | Carbon and Alloy Steel Pipe, Electric-Fusion-Welded for High-Pressure Service at High Temperatures | 1237 |
| SA-693 | Precipitation-Hardening Stainless and Heat-Resisting Steel Plate, Sheet, and Strip | 1245 |
| SA-695 | Steel Bars, Carbon, Hot-Wrought, Special Quality, for Fluid Power Applications | 1253 |
| SA-696 | Steel Bars, Carbon, Hot-Wrought or Cold-Finished, Special Quality, for Pressure Piping Components | 1257 |
| SA-703/SA-703M | Steel Castings, General Requirements, for Pressure-Containing Parts | 1261 |
| SA-705/SA-705M | Age-Hardening Stainless Steel Forgings | 1281 |
| SA-723/SA-723M | Alloy Steel Forgings for High-Strength Pressure Component Application | 1289 |
| SA-724/SA-724M | Pressure Vessel Plates, Carbon-Manganese-Silicon Steel, Quenched and Tempered, for Welded Layered Pressure Vessels | 1295 |
| SA-727/SA-727M | Forgings, Carbon Steel, for Piping Components With Inherent Notch Toughness | 1299 |
| SA-731/SA-731M | Seamless, Welded Ferritic, and Martensitic Stainless Steel Pipe | 1305 |
| SA-736/SA-736M | Pressure Vessel Plates, Low-Carbon Age-Hardening Nickel-Copper-Chromium-Molybdenum-Columbium and Nickel-Copper-Manganese-Molybdenum-Columbium Alloy Steel | 1311 |
| SA-737/SA-737M | Pressure Vessel Plates, High-Strength, Low-Alloy Steel | 1317 |
| SA-738/SA-738M | Pressure Vessel Plates, Heat-Treated, Carbon-Manganese-Silicon Steel, for Moderate and Lower Temperature Service | 1321 |
| SA-739 | Steel Bars, Alloy, Hot-Wrought, for Elevated Temperature or Pressure-Containing Parts, or Both | 1327 |
| SA-745/SA-745M | Ultrasonic Examination of Austenitic Steel Forgings | 1331 |
| SA-747/SA-747M | Steel Castings, Stainless, Precipitation Hardening | 1337 |
| SA-748/SA-748M | Statically Cast Chilled White Iron-Gray Iron Dual Metal Rolls for Pressure Vessel Use | 1343 |
| SA-749/SA-749M | Steel, Strip, Carbon and High-Strength Low-Alloy, Hot-Rolled, General Requirements for | 1345 |
| SA-751 | Test Methods, Practices, and Terminology for Chemical Analysis of Steel Products | 1355 |
| SA-765/SA-765M | Carbon Steel and Low-Alloy Steel Pressure-Vessel-Component Forgings With Mandatory Toughness Requirements | 1363 |
| SA-770/SA-770M | Through-Thickness Tension Testing of Steel Plates for Special Applications | 1371 |
| SA-781/SA-781M | Castings, Steel and Alloy, Common Requirements, for General Industrial Use | 1379 |
| SA-788/SA-788M | Steel Forgings, General Requirements | 1397 |
| SA-789/SA-789M | Seamless and Welded Ferritic/Austenitic Stainless Steel Tubing for General Service | 1413 |
| SA-790/SA-790M | Seamless and Welded Ferritic/Austenitic Stainless Steel Pipe | 1421 |
| SA-803/SA-803M | Welded Ferritic Stainless Steel Feedwater Heater Tubes | 1433 |
| SA-813/SA-813M | Single- or Double-Welded Austenitic Stainless Steel Pipe | 1445 |
| SA-814/SA-814M | Cold-Worked Welded Austenitic Stainless Steel Pipe | 1455 |
| SA-815/SA-815M | Wrought Ferritic, Ferritic/Austenitic, and Martensitic Stainless Steel Piping Fittings | 1463 |
| SA-832/SA-832M | Pressure Vessel Plates, Alloy Steel, Chromium-Molybdenum-Vanadium | 1473 |
| SA-834 | Common Requirements for Iron Castings for General Industrial Use | 1479 |

| | | |
|------------------|---|------|
| SA-836/SA-836M | Forgings, Titanium-Stabilized Carbon Steel, for Glass-Lined Piping and Pressure Vessel Service | 1483 |
| SA-841/SA-841M | Steel Plates for Pressure Vessels, Produced by the Thermo-Mechanical Control Process (TMCP) | 1487 |
| SA-905 | Steel Wire, Pressure Vessel Winding | 1497 |
| SA-941 | Terminology Relating to Steel, Stainless Steel, Related Alloys, and Ferroalloys. | 1503 |
| SA-960 | Common Requirements for Wrought Steel Piping Fittings | 1511 |
| SA-961 | Common Requirements for Steel Flanges, Forged Fittings, Valves and Parts for Piping Applications | 1523 |
| SA-962/SA-962M | Common Requirements for Steel Fasteners or Fastener Materials, or Both, Intended for Use at Any Temperature from Cryogenic to the Creep Range | 1535 |
| SA-965/SA-965M | Steel Forgings, Austenitic, for Pressure and High Temperature Parts | 1545 |
| SA-985/SA-985M | Steel Investment Castings General Requirements, for Pressure-Containing Parts | 1553 |
| SA-995 | Castings, Austenitic-Ferritic (Duplex) Stainless Steel, for Pressure-Containing Parts. | 1575 |
| SA-999/SA-999M | General Requirements for Alloy and Stainless Steel Pipe | 1579 |
| SA-1008/SA-1008M | Steel, Sheet, Cold-Rolled, Carbon, Structural, High-Strength Low-Alloy and High-Strength Low-Alloy With Improved Formability. | 1593 |
| SA-1010/SA-1010M | Higher-Strength Martensitic Stainless Steel Plate, Sheet, and Strip. | 1603 |
| SA-1011/SA-1011M | Steel, Sheet and Strip, Hot-Rolled, Carbon, Structural, High-Strength Low-Alloy and High-Strength Low-Alloy With Improved Formability | 1607 |
| SA-1016/SA-1016M | General Requirements for Ferritic Alloy Steel, Austenitic Alloy Steel, and Stainless Steel Tubes | 1617 |
| SA-1017/SA-1017M | Pressure Vessel Plates, Alloy-Steel Chromium-Molybdenum-Tungsten | 1633 |
| SF-568M | Carbon and Alloy Steel Externally Threaded Metric Fasteners. | 1637 |
| SA/AS 1548 | Steel Plates for Pressure Equipment | 1649 |
| SA/CSA-G40.21 | Structural Quality Steels. | 1651 |
| SA/EN 10028-2 | Flat Products Made of Steels for Pressure Purposes | 1653 |
| SA/EN 10028-3 | Flat Products Made of Steels for Pressure Purposes Part 3: Weldable Fine Grain Steels, Normalized | 1655 |
| SA/JIS G3118 | Carbon Steel Plates for Pressure Vessels for Intermediate and Moderate Temperature Service. | 1657 |

MANDATORY APPENDIX

| | | |
|---|--|------|
| I | Standard Units for Use in Equations. | 1659 |
|---|--|------|

NONMANDATORY APPENDIX

| | | |
|---|-------------------------------|------|
| A | Sources of Standards. | 1661 |
|---|-------------------------------|------|

FOREWORD

The American Society of Mechanical Engineers set up a committee in 1911 for the purpose of formulating standard rules for the construction of steam boilers and other pressure vessels. This committee is now called the Boiler and Pressure Vessel Committee.

The Committee's function is to establish rules of safety, relating only to pressure integrity, governing the construction¹ of boilers, pressure vessels, transport tanks and nuclear components, and inservice inspection for pressure integrity of nuclear components and transport tanks, and to interpret these rules when questions arise regarding their intent. This code does not address other safety issues relating to the construction of boilers, pressure vessels, transport tanks and nuclear components, and the inservice inspection of nuclear components and transport tanks. The user of the Code should refer to other pertinent codes, standards, laws, regulations, or other relevant documents. With few exceptions, the rules do not, of practical necessity, reflect the likelihood and consequences of deterioration in service related to specific service fluids or external operating environments. Recognizing this, the Committee has approved a wide variety of construction rules in this Section to allow the user or his designee to select those which will provide a pressure vessel having a margin for deterioration in service so as to give a reasonably long, safe period of usefulness. Accordingly, it is not intended that this Section be used as a design handbook; rather, engineering judgment must be employed in the selection of those sets of Code rules suitable to any specific service or need.

This Code contains mandatory requirements, specific prohibitions, and nonmandatory guidance for construction activities. The Code does not address all aspects of these activities and those aspects which are not specifically addressed should not be considered prohibited. The Code is not a handbook and cannot replace education, experience, and the use of engineering judgment. The phrase *engineering judgment* refers to technical judgments made by knowledgeable designers experienced in the application of the Code. Engineering judgments must be consistent with Code philosophy and such judgments must never be used to overrule mandatory requirements or specific prohibitions of the Code.

¹ *Construction*, as used in this Foreword, is an all-inclusive term comprising materials, design, fabrication, examination, inspection, testing, certification, and pressure relief.

The Committee recognizes that tools and techniques used for design and analysis change as technology progresses and expects engineers to use good judgment in the application of these tools. The designer is responsible for complying with Code rules and demonstrating compliance with Code equations when such equations are mandatory. The Code neither requires nor prohibits the use of computers for the design or analysis of components constructed to the requirements of the Code. However, designers and engineers using computer programs for design or analysis are cautioned that they are responsible for all technical assumptions inherent in the programs they use and they are responsible for the application of these programs to their design.

The Code does not fully address tolerances. When dimensions, sizes, or other parameters are not specified with tolerances, the values of these parameters are considered nominal and allowable tolerances or local variances may be considered acceptable when based on engineering judgment and standard practices as determined by the designer.

The Boiler and Pressure Vessel Committee deals with the care and inspection of boilers and pressure vessels in service only to the extent of providing suggested rules of good practice as an aid to owners and their inspectors.

The rules established by the Committee are not to be interpreted as approving, recommending, or endorsing any proprietary or specific design or as limiting in any way the manufacturer's freedom to choose any method of design or any form of construction that conforms to the Code rules.

The Boiler and Pressure Vessel Committee meets regularly to consider revisions of the rules, new rules as dictated by technological development, Code Cases, and requests for interpretations. Only the Boiler and Pressure Vessel Committee has the authority to provide official interpretations of this Code. Requests for revisions, new rules, Code Cases, or interpretations shall be addressed to the Secretary in writing and shall give full particulars in order to receive consideration and action (see Mandatory Appendix covering preparation of technical inquiries). Proposed revisions to the Code resulting from inquiries will be presented to the Main Committee for appropriate action. The action of the Main Committee becomes effective only after confirmation by letter ballot of the Committee and approval by ASME.

Proposed revisions to the Code approved by the Committee are submitted to the American National Standards Institute and published at <http://cstools.asme.org/csconnect/public/index.cfm?PublicReview=Revisions> to invite comments from all interested persons. After the allotted time for public review and final approval by ASME, revisions are published annually in Addenda to the Code.

Code Cases may be used in the construction of components to be stamped with the ASME Code symbol beginning with the date of their approval by ASME.

After Code revisions are approved by ASME, they may be used beginning with the date of issuance shown on the Addenda. Revisions, except for revisions to material specifications in Section II, Parts A and B, become mandatory six months after such date of issuance, except for boilers or pressure vessels contracted for prior to the end of the six-month period. Revisions to material specifications are originated by the American Society for Testing and Materials (ASTM) and other recognized national or international organizations, and are usually adopted by ASME. However, those revisions may or may not have any effect on the suitability of material, produced to earlier editions of specifications, for use in ASME construction. ASME material specifications approved for use in each construction Code are listed in the Guidelines for Acceptable ASTM Editions in Section II, Parts A and B. These Guidelines list, for each specification, the latest edition adopted by ASME, and earlier and later editions considered by ASME to be identical for ASME construction.

The Boiler and Pressure Vessel Committee in the formulation of its rules and in the establishment of maximum design and operating pressures considers materials, construction, methods of fabrication, inspection, and safety devices.

The Code Committee does not rule on whether a component shall or shall not be constructed to the provisions of the Code. The Scope of each Section has been established to identify the components and parameters considered by the Committee in formulating the Code rules.

Questions or issues regarding compliance of a specific component with the Code rules are to be directed to the ASME Certificate Holder (Manufacturer). Inquiries concerning the interpretation of the Code are to be directed to the ASME Boiler and Pressure Vessel Committee.

ASME is to be notified should questions arise concerning improper use of an ASME Code symbol.

The specifications for materials given in Section II are identical with or similar to those of specifications published by ASTM, AWS, and other recognized national or international organizations. When reference is made in an ASME material specification to a non-ASME specification for which a companion ASME specification exists, the reference shall be interpreted as applying to the ASME material specification. Not all materials included in the material specifications in Section II have been adopted for Code use. Usage is limited to those materials and grades adopted by at least one of the other Sections of the Code for application under rules of that Section. All materials allowed by these various Sections and used for construction within the scope of their rules shall be furnished in accordance with material specifications contained in Section II or referenced in the Guidelines for Acceptable ASTM Editions in Section II, Parts A and B, except where otherwise provided in Code Cases or in the applicable Section of the Code. Materials covered by these specifications are acceptable for use in items covered by the Code Sections only to the degree indicated in the applicable Section. Materials for Code use should preferably be ordered, produced, and documented on this basis; Guideline for Acceptable ASTM Editions in Section II, Part A and Guideline for Acceptable ASTM Editions in Section II, Part B list editions of ASME and year dates of specifications that meet ASME requirements and which may be used in Code construction. Material produced to an acceptable specification with requirements different from the requirements of the corresponding specifications listed in the Guideline for Acceptable ASTM Editions in Part A or Part B may also be used in accordance with the above, provided the material manufacturer or vessel manufacturer certifies with evidence acceptable to the Authorized Inspector that the corresponding requirements of specifications listed in the Guideline for Acceptable ASTM Editions in Part A or Part B have been met. Material produced to an acceptable material specification is not limited as to country of origin.

When required by context in this Section, the singular shall be interpreted as the plural, and vice-versa; and the feminine, masculine, or neuter gender shall be treated as such other gender as appropriate.

STATEMENT OF POLICY ON THE USE OF CODE SYMBOLS AND CODE AUTHORIZATION IN ADVERTISING

ASME has established procedures to authorize qualified organizations to perform various activities in accordance with the requirements of the ASME Boiler and Pressure Vessel Code. It is the aim of the Society to provide recognition of organizations so authorized. An organization holding authorization to perform various activities in accordance with the requirements of the Code may state this capability in its advertising literature.

Organizations that are authorized to use Code Symbols for marking items or constructions that have been constructed and inspected in compliance with the ASME Boiler and Pressure Vessel Code are issued Certificates of Authorization. It is the aim of the Society to maintain the standing of the Code Symbols for the benefit of the users, the enforcement jurisdictions, and the holders of the symbols who comply with all requirements.

Based on these objectives, the following policy has been established on the usage in advertising of facsimiles of the symbols, Certificates of Authorization, and reference to Code construction. The American Society of Mechanical Engineers does not “approve,” “certify,” “rate,” or

“endorse” any item, construction, or activity and there shall be no statements or implications that might so indicate. An organization holding a Code Symbol and/or a Certificate of Authorization may state in advertising literature that items, constructions, or activities “are built (produced or performed) or activities conducted in accordance with the requirements of the ASME Boiler and Pressure Vessel Code,” or “meet the requirements of the ASME Boiler and Pressure Vessel Code.”

The ASME Symbol shall be used only for stamping and nameplates as specifically provided in the Code. However, facsimiles may be used for the purpose of fostering the use of such construction. Such usage may be by an association or a society, or by a holder of a Code Symbol who may also use the facsimile in advertising to show that clearly specified items will carry the symbol. General usage is permitted only when all of a manufacturer’s items are constructed under the rules.

The ASME logo, which is the cloverleaf with the letters ASME within, shall not be used by any organization other than ASME.

STATEMENT OF POLICY ON THE USE OF ASME MARKING TO IDENTIFY MANUFACTURED ITEMS

The ASME Boiler and Pressure Vessel Code provides rules for the construction of boilers, pressure vessels, and nuclear components. This includes requirements for materials, design, fabrication, examination, inspection, and stamping. Items constructed in accordance with all of the applicable rules of the Code are identified with the official Code Symbol Stamp described in the governing Section of the Code.

Markings such as “ASME,” “ASME Standard,” or any other marking including “ASME” or the various Code

Symbols shall not be used on any item that is not constructed in accordance with all of the applicable requirements of the Code.

Items shall not be described on ASME Data Report Forms nor on similar forms referring to ASME that tend to imply that all Code requirements have been met when, in fact, they have not been. Data Report Forms covering items not fully complying with ASME requirements should not refer to ASME or they should clearly identify all exceptions to the ASME requirements.

Page intentionally blank

PERSONNEL

ASME Boiler and Pressure Vessel Committee

Subcommittees, Subgroups, and Working Groups

As of January 1, 2007

MAIN COMMITTEE

| | |
|---------------------------------------|------------------------------------|
| G. G. Karcher, <i>Chair</i> | U. R. Miller |
| J. G. Feldstein, <i>Vice Chair</i> | P. A. Molvie |
| J. S. Brzuszkiewicz, <i>Secretary</i> | C. C. Neely |
| R. W. Barnes | W. E. Norris |
| R. J. Basile | G. C. Park |
| J. E. Batey | T. P. Pastor |
| D. L. Berger | M. D. Rana |
| M. N. Bressler | B. W. Roberts |
| D. A. Canonico | F. J. Schaaf, Jr. |
| R. P. Deubler | A. Selz |
| D. A. Douin | R. W. Swayne |
| R. E. Gimble | D. E. Tanner |
| M. Gold | S. V. Voorhees |
| T. E. Hansen | F. B. Kovacs, <i>Alternate</i> |
| C. L. Hoffmann | R. A. Moen, <i>Honorary Member</i> |
| D. F. Landers | T. Tahara, <i>Delegate</i> |
| W. M. Lundy | |
| J. R. MacKay | |

HONORS AND AWARDS COMMITTEE

| | |
|----------------------------|---------------------|
| J. R. MacKay, <i>Chair</i> | W. L. Haag, Jr. |
| M. Gold, <i>Vice Chair</i> | S. F. Harrison, Jr. |
| G. Moino, <i>Secretary</i> | R. M. Jessee |
| R. J. Basile | W. C. Larochele |
| J. E. Batey | T. P. Pastor |
| D. L. Berger | A. Selz |
| J. G. Feldstein | R. R. Stevenson |
| F. E. Gregor | |

MARINE CONFERENCE GROUP

| | |
|---------------------------|-------------|
| H. N. Patel, <i>Chair</i> | R. J. Petow |
| L. W. Douthwaite | |

CONFERENCE COMMITTEE

| | |
|---|---|
| D. A. Douin — Illinois (<i>Chair</i>) | D. C. Cook — California |
| R. D. Reetz — North Dakota (<i>Vice Chair</i>) | R. A. Coomes — Kentucky |
| D. E. Tanner — Ohio (<i>Secretary</i>) | D. Eastman — Newfoundland and Labrador, Canada |
| R. J. Aben, Jr. — Michigan | G. L. Ebeyer — Louisiana |
| J. S. Aclaro — California | E. Everett — Georgia |
| A. E. Adkins — West Virginia | J. M. Given, Jr. — North Carolina |
| J. T. Amato — Minnesota | P. Hackford — Utah |
| E. A. Anderson — Illinois | R. J. Handy — Kentucky |
| F. R. Andrus — Oregon | J. B. Harlan — Delaware |
| B. P. Anthony — Rhode Island | M. L. Holloway — Oklahoma |
| R. D. Austin — Colorado | K. Hynes — Prince Edward Island, Canada |
| E. W. Bachellier — Nunavut, Canada | D. T. Jagger — Ohio |
| M. M. Barber — Michigan | D. J. Jenkins — Kansas |
| R. W. Bartlett — Arizona | S. Katz — British Columbia, Canada |
| F. P. Barton — Virginia | M. Kotb — Quebec, Canada |
| M. Bishop — British Columbia, Canada | K. T. Lau — Alberta, Canada |
| W. K. Brigham — New Hampshire | M. A. Malek — Florida |
| D. E. Burns — Nebraska | G. F. Mankel — Nevada |
| J. H. Burpee — Maine | R. D. Marvin II — Washington |
| C. J. Castle — Nova Scotia, Canada | I. W. Mault — Manitoba, Canada |
| P. A. Conklin — New York | H. T. McEwen — Mississippi |

EXECUTIVE COMMITTEE (MAIN COMMITTEE)

| | |
|---------------------------------------|--|
| J. G. Feldstein, <i>Chair</i> | T. P. Pastor |
| G. G. Karcher, <i>Vice Chair</i> | A. Selz |
| J. S. Brzuszkiewicz, <i>Secretary</i> | D. E. Tanner |
| R. W. Barnes | D. A. Canonico, <i>Ex-Officio Member</i> |
| D. L. Berger | M. Kotb, <i>Ex-Officio Member</i> |
| M. Gold | |
| G. C. Park | |

HONORARY MEMBERS (MAIN COMMITTEE)

| | |
|---------------|-----------------|
| F. P. Barton | M. H. Jawad |
| R. D. Bonner | A. J. Justin |
| R. J. Bosnak | E. L. Kemmler |
| R. J. Cepluch | W. G. Knecht |
| L. J. Chockie | J. LeCoff |
| T. M. Cullen | T. G. McCarty |
| W. D. Doty | G. C. Millman |
| J. R. Farr | R. F. Reedy |
| G. E. Feigel | W. E. Somers |
| R. C. Griffin | K. K. Tam |
| O. F. Hedden | L. P. Zick, Jr. |
| E. J. Hemzy | |

CONFERENCE COMMITTEE (CONT'D)

| | |
|--|---------------------------------------|
| R. D. Mile — Ontario, Canada | R. S. Pucek — Wisconsin |
| M. F. Mooney — Massachusetts | D. E. Ross — New Brunswick, Canada |
| G. R. Myrick — Arkansas | N. Surtees — Saskatchewan, Canada |
| Y. Nagpaul — Hawaii | M. R. Toth — Tennessee |
| W. R. Owens — Louisiana | M. J. Verhagen — Wisconsin |
| T. M. Parks — Texas | M. Washington — New Jersey |
| R. P. Pate — Alabama | R. B. West — Iowa |
| J. D. Payton — Pennsylvania | M. J. Wheel — Vermont |
| M. R. Peterson — Alaska | D. J. Willis — Indiana |
| H. D. Pfaff — South Dakota | E. Zarate — Arizona |
| J. L. Pratt — Missouri | |
| D. C. Price — Yukon Territory, Canada | |

BPV PROJECT TEAM ON HYDROGEN TANKS

| | |
|--|---|
| M. D. Rana, <i>Chair</i> | R. C. Biel, <i>Corresponding Member</i> |
| G. M. Eisenberg, <i>Secretary</i> | J. Cameron, <i>Corresponding Member</i> |
| F. L. Brown | M. Duncan, <i>Corresponding Member</i> |
| D. A. Canonico | D. R. Frikken, <i>Corresponding Member</i> |
| D. C. Cook | L. E. Hayden, Jr., <i>Corresponding Member</i> |
| J. W. Felbaum | K. T. Lau, <i>Corresponding Member</i> |
| T. Joseph | K. Oyamada, <i>Corresponding Member</i> |
| J. M. Lacy | C. H. Rivkin, <i>Corresponding Member</i> |
| N. L. Newhouse | C. San Marchi, <i>Corresponding Member</i> |
| G. B. Rawls, Jr. | B. Somerday, <i>Corresponding Member</i> |
| J. R. Sims, Jr. | |
| N. Sirosh | |
| J. H. Smith | |
| S. Staniszewski | |
| T. Tahara | |
| D. W. Treadwell | |
| E. Uptis | |
| C. T. L. Webster | |
| H. Barthelemy, <i>Corresponding Member</i> | |

INTERNATIONAL INTEREST REVIEW GROUP

| | |
|-------------|-------------------------|
| V. Felix | Y. Park |
| S. H. Leong | P. Williamson |
| W. Lin | Y. Kim, <i>Delegate</i> |
| C. Minu | |

SUBCOMMITTEE ON POWER BOILERS (SC I)

| | |
|----------------------------------|---------------------|
| D. L. Berger, <i>Chair</i> | W. L. Lowry |
| B. W. Roberts, <i>Vice Chair</i> | J. R. MacKay |
| U. D'Urso, <i>Secretary</i> | T. C. McGough |
| D. A. Canonico | R. E. McLaughlin |
| K. K. Coleman | P. A. Molvie |
| P. D. Edwards | Y. Oishi |
| J. G. Feldstein | J. T. Pillow |
| J. Hainsworth | R. D. Schueler, Jr. |
| T. E. Hansen | J. P. Swezy, Jr. |
| J. S. Hunter | J. M. Tanzosh |
| C. F. Jeerings | R. V. Wielgoszinski |
| J. P. Libbrecht | D. J. Willis |

Honorary Members (SC I)

| | |
|--------------|----------------|
| D. N. French | R. L. Williams |
| W. E. Somers | |

Subgroup on Design (SC I)

| | |
|-------------------------------|---------------------|
| P. A. Molvie, <i>Chair</i> | J. P. Libbrecht |
| G. L. Hiler, <i>Secretary</i> | J. C. Light |
| M. L. Coats | B. W. Moore |
| J. D. Fishburn | R. D. Schueler, Jr. |
| J. P. Glaspie | J. L. Seigle |
| C. F. Jeerings | J. P. Swezy, Jr. |
| G. B. Komora | S. V. Torkildson |

Subgroup on Fabrication and Examination (SC I)

| | |
|----------------------------|---------------------|
| J. T. Pillow, <i>Chair</i> | T. E. Hansen |
| J. L. Arnold | T. C. McGough |
| D. L. Berger | R. E. McLaughlin |
| S. W. Cameron | Y. Oishi |
| G. W. Galanes | R. V. Wielgoszinski |
| J. Hainsworth | |

Subgroup on General Requirements (SC I)

| | |
|---------------------------------|---------------------|
| R. E. McLaughlin, <i>Chair</i> | T. C. McGough |
| J. Hainsworth, <i>Secretary</i> | J. T. Pillow |
| G. Cook | D. Tompkins |
| P. D. Edwards | S. V. Torkildson |
| T. E. Hansen | R. V. Wielgoszinski |
| W. L. Lowry | D. J. Willis |
| F. Massi | |

Subgroup on Materials (SC I)

| | |
|--------------------------------|-----------------|
| B. W. Roberts, <i>Chair</i> | J. F. Henry |
| J. S. Hunter, <i>Secretary</i> | J. P. Libbrecht |
| D. A. Canonico | J. R. MacKay |
| K. K. Coleman | F. Masuyama |
| G. W. Galanes | J. M. Tanzosh |
| K. L. Hayes | |

Subgroup on Piping (SC I)

| | |
|----------------------------|---------------|
| T. E. Hansen, <i>Chair</i> | F. Massi |
| D. L. Berger | T. C. McGough |
| P. D. Edwards | D. Tompkins |
| G. W. Galanes | E. A. Whittle |
| W. L. Lowry | |

Heat Recovery Steam Generators Task Group (SC I)

| | |
|--------------------------------|----------------------|
| T. E. Hansen, <i>Chair</i> | B. W. Moore |
| E. M. Ortman, <i>Secretary</i> | A. L. Plumley |
| R. W. Anderson | R. D. Schueler, Jr. |
| J. P. Bell | J. C. Steverman, Jr. |
| L. R. Douglas | S. R. Timko |
| J. D. Fishburn | D. Tompkins |
| G. B. Komora | S. V. Torkildson |
| J. P. Libbrecht | B. C. Turczynski |
| D. L. Marriott | E. A. Turhan |

SUBCOMMITTEE ON MATERIALS (SC II)

| | |
|----------------------------|------------------------------------|
| J. F. Henry, <i>Chair</i> | C. L. Hoffmann |
| M. Gold, <i>Vice Chair</i> | P. A. Larkin |
| N. Lobo, <i>Secretary</i> | F. Masuyama |
| F. Abe | R. K. Nanstad |
| D. C. Agarwal | M. L. Nayyar |
| W. R. Apblett, Jr. | E. G. Nisbett |
| A. Appleton | D. W. Rahoi |
| M. N. Bressler | B. W. Roberts |
| H. D. Bushfield | E. Shapiro |
| J. Cameron | R. C. Sutherlin |
| D. A. Canonico | R. W. Swindeman |
| A. Chaudouet | J. M. Tanzosh |
| P. Fallouey | B. E. Thurgood |
| D. W. Gandy | R. A. Moen, <i>Honorary Member</i> |
| M. H. Gilkey | D. Kwon, <i>Delegate</i> |
| J. F. Grubb | |

Honorary Members (SC II)

| | |
|---------------|--------------------|
| A. P. Ahrendt | J. J. Heger |
| T. M. Cullen | G. C. Hsu |
| R. Dirscherl | R. A. Moen |
| W. D. Doty | C. E. Spaeder, Jr. |
| W. D. Edsall | A. W. Zeuthen |

Subgroup on External Pressure (SC II & SC-D)

| | |
|-----------------------------------|------------------|
| R. W. Mikitka, <i>Chair</i> | M. Katcher |
| J. A. A. Morrow, <i>Secretary</i> | D. L. Kurlle |
| L. F. Campbell | E. Michalopoulos |
| D. S. Griffin | D. Nadel |
| J. F. Grubb | C. H. Sturgeon |

Subgroup on Ferrous Specifications (SC II)

| | |
|--------------------------------|---------------|
| E. G. Nisbett, <i>Chair</i> | D. C. Krouse |
| A. Appleton, <i>Vice Chair</i> | L. J. Lavezzi |
| R. M. Davison | W. C. Mack |
| B. M. Dingman | J. K. Mahaney |
| M. J. Dosdourian | A. S. Melilli |
| T. Graham | K. E. Orié |
| J. F. Grubb | E. Uptis |
| K. M. Hottle | R. Zawierucha |
| D. S. Janikowski | A. W. Zeuthen |

Subgroup on International Material Specifications (SC II)

| | |
|---------------------------------|--------------------------|
| W. M. Lundy, <i>Chair</i> | D. O. Henry |
| A. Chaudouet, <i>Vice Chair</i> | M. Higuchi |
| J. P. Glaspie, <i>Secretary</i> | H. Lorenz |
| D. C. Agarwal | A. R. Nywening |
| H. D. Bushfield | R. D. Schueler, Jr. |
| D. A. Canonico | E. A. Steen |
| P. Fallouey | E. Uptis |
| A. F. Garbolevsky | D. Kwon, <i>Delegate</i> |

Subgroup on Nonferrous Alloys (SC II)

| | |
|------------------------------|-------------------|
| D. W. Rahoi, <i>Chair</i> | A. G. Kireta, Jr. |
| M. Katcher, <i>Secretary</i> | J. Kissell |
| D. C. Agarwal | P. A. Larkin |
| W. R. Apblett, Jr. | H. Matsuo |
| H. D. Bushfield | J. A. McMaster |
| L. G. Coffee | D. T. Peters |
| M. H. Gilkey | E. Shapiro |
| J. F. Grubb | R. C. Sutherlin |
| E. L. Hibner | R. Zawierucha |
| G. C. Hsu | |

Subgroup on Strength, Ferrous Alloys (SC II)

| | |
|---------------------------------|---------------------|
| C. L. Hoffmann, <i>Chair</i> | F. Masuyama |
| J. M. Tanzosh, <i>Secretary</i> | H. Matsuo |
| F. Abe | H. Murakami |
| W. R. Apblett, Jr. | D. W. Rahoi |
| D. A. Canonico | B. W. Roberts |
| K. K. Coleman | M. S. Shelton |
| P. Fallouey | R. W. Swindeman |
| M. Gold | B. E. Thurgood |
| J. F. Henry | T. P. Vassallo, Jr. |
| E. L. Hibner | |

Subgroup on Physical Properties (SC II)

| | |
|---------------------------|-------------|
| J. F. Grubb, <i>Chair</i> | P. Fallouey |
| D. C. Agarwal | E. Shapiro |
| H. D. Bushfield | |

Subgroup on Strength of Weldments (SC II & SC IX)

| | |
|-------------------------------------|----------------|
| J. M. Tanzosh, <i>Chair</i> | J. F. Henry |
| W. F. Newell, Jr., <i>Secretary</i> | D. W. Rahoi |
| K. K. Coleman | B. W. Roberts |
| P. D. Flenner | W. J. Sperko |
| D. W. Gandy | B. E. Thurgood |
| K. L. Hayes | |

Subgroup on Toughness (SC II & SC VIII)

| | |
|----------------------------|----------------|
| W. S. Jacobs, <i>Chair</i> | K. Mokhtarian |
| J. L. Arnold | C. C. Neely |
| R. J. Basile | T. T. Phillips |
| J. Cameron | M. D. Rana |
| H. E. Gordon | D. A. Swanson |
| D. C. Lamb | E. Uptis |

Special Working Group on Nonmetallic Materials (SC II)

| | |
|----------------------------|---------------|
| C. W. Rowley, <i>Chair</i> | M. R. Kessler |
| F. L. Brown | R. H. Walker |
| S. R. Frost | J. W. Wegner |
| P. S. Hill | F. Worth |

SUBCOMMITTEE ON NUCLEAR POWER (SC III)

| | |
|---------------------------------|-----------------------------|
| R. W. Barnes, <i>Chair</i> | V. Kostarev |
| R. M. Jessee, <i>Vice Chair</i> | D. F. Landers |
| C. A. Sanna, <i>Secretary</i> | W. C. LaRochelle |
| W. H. Borter | K. A. Manoly |
| M. N. Bressler | E. A. Mayhew |
| J. R. Cole | W. N. McLean |
| R. E. Cornman, Jr. | D. K. Morton |
| R. P. Deubler | O. O. Oyamada |
| B. A. Erler | R. F. Reedy |
| G. M. Foster | B. B. Scott |
| R. S. Hill III | J. D. Stevenson |
| C. L. Hoffmann | K. R. Wichman |
| C. C. Kim | Y. H. Choi, <i>Delegate</i> |

Honorary Members (SC III)

| | |
|--------------|--------------|
| R. J. Bosnak | F. R. Drahos |
| E. B. Branch | R. A. Moen |
| W. D. Doty | C. J. Pieper |

**Subgroup on Containment Systems for Spent Fuel
and High-Level Waste Transport Packagings (SC III)**

| | |
|----------------------------------|-------------------|
| G. M. Foster, <i>Chair</i> | A. B. Meichler |
| G. J. Solovey, <i>Vice Chair</i> | R. E. Nickell |
| D. K. Morton, <i>Secretary</i> | E. L. Pleins |
| W. H. Borter | T. Saegusa |
| G. R. Cannell | H. P. Shrivastava |
| E. L. Farrow | N. M. Simpson |
| R. S. Hill III | R. H. Smith |
| D. W. Lewis | J. D. Stevenson |
| C. G. May | C. J. Temus |
| P. E. McConnell | P. Turula |
| I. D. McInnes | A. D. Watkins |

Subgroup on Design (SC III)

| | |
|-----------------------------------|-------------------|
| R. P. Deubler, <i>Chair</i> | D. F. Landers |
| R. S. Hill III, <i>Vice Chair</i> | K. A. Manoly |
| A. N. Nguyen, <i>Secretary</i> | R. J. Masterson |
| T. M. Adams | W. N. McLean |
| M. N. Bressler | J. C. Minichiello |
| C. W. Bruny | M. Morishita |
| D. L. Caldwell | F. F. Naguib |
| J. R. Cole | T. Nakamura |
| R. E. Cornman, Jr. | W. Z. Novak |
| A. A. Dermenjian | E. L. Pleins |
| P. Hirschberg | I. Saito |
| R. I. Jetter | G. C. Slagis |
| R. B. Keating | J. D. Stevenson |
| J. F. Kielb | J. P. Tucker |
| H. Kobayashi | K. R. Wichman |

Working Group on Supports (SG-D) (SC III)

| | |
|-------------------------------|---------------|
| R. J. Masterson, <i>Chair</i> | I. Saito |
| F. J. Birch, <i>Secretary</i> | J. R. Stinson |
| U. S. Bandyopadhyay | T. G. Terryah |
| R. P. Deubler | D. V. Walshe |
| W. P. Golini | C.-I. Wu |
| A. N. Nguyen | |

Working Group on Core Support Structures (SG-D) (SC III)

| | |
|---------------------------|----------------|
| J. F. Kielb, <i>Chair</i> | J. F. Mullooly |
| J. T. Land | |

Working Group on Design Methodology (SG-D)

| | |
|----------------------------------|-----------------|
| R. B. Keating, <i>Chair</i> | D. F. Landers |
| P. L. Anderson, <i>Secretary</i> | W. S. Lapay |
| T. M. Adams | H. Lockert |
| M. K. Au-Yang | J. F. McCabe |
| R. D. Blevins | P. R. Olson |
| D. L. Caldwell | J. D. Stevenson |
| M. Hartzman | J. Yang |
| H. Kobayashi | |

**Working Group on Design of Division 3 Containments
(SG-D) (SC III)**

| | |
|----------------------------|-------------------|
| E. L. Pleins, <i>Chair</i> | D. K. Morton |
| T. M. Adams | R. E. Nickell |
| G. Bjorkman | H. P. Shrivastava |
| D. W. Lewis | C. J. Temus |
| I. D. McInnes | P. Turula |
| J. C. Minichiello | |

Working Group on Piping (SG-D) (SC III)

| | |
|------------------------------|-------------------|
| P. Hirschberg, <i>Chair</i> | D. F. Landers |
| R. C. Fung, <i>Secretary</i> | J. F. McCabe |
| T. M. Adams | J. C. Minichiello |
| C. Basavaraju | A. N. Nguyen |
| J. Catalano | O. O. Oyamada |
| J. R. Cole | R. D. Patel |
| R. J. Gurdal | E. C. Rodabaugh |
| R. W. Haupt | M. S. Sills |
| J. Kawahata | G. C. Slagis |
| R. B. Keating | E. A. Wais |
| V. Kostarev | C.-I. Wu |

**Working Group on Probabilistic Methods in Design
(SG-D) (SC III)**

| | |
|------------------------------|----------------|
| R. S. Hill III, <i>Chair</i> | S. D. Kulat |
| T. M. Adams | A. McNeill III |
| T. Asayama | P. J. O'Regan |
| B. M. Ayyub | N. A. Palm |
| T. A. Bacon | I. Saito |
| A. A. Dermenjian | M. E. Schmidt |
| M. R. Graybeal | J. P. Tucker |
| D. O. Henry | R. M. Wilson |
| E. V. Imbro | |

Working Group on Pumps (SG-D) (SC III)

| | |
|----------------------------------|------------------|
| R. E. Cornman, Jr., <i>Chair</i> | J. W. Leavitt |
| M. D. Eftychiou | J. E. Livingston |
| A. A. Fraser | J. R. Rajan |
| M. Higuchi | A. G. Washburn |
| G. R. Jones | |

Working Group on Valves (SG-D) (SC III)

| | |
|----------------------------|-------------------|
| J. P. Tucker, <i>Chair</i> | J. D. Page |
| R. R. Brodin | S. N. Shields |
| G. A. Jolly | H. R. Sonderegger |
| W. N. McLean | J. C. Tsacoyeanes |
| T. A. McMahan | R. G. Visalli |

Working Group on Vessels (SG-D) (SC III)

| | |
|--------------------------------|----------------|
| F. F. Naguib, <i>Chair</i> | A. Kalnins |
| G. K. Miller, <i>Secretary</i> | R. B. Keating |
| C. W. Bruny | K. Matsunaga |
| G. D. Cooper | D. E. Matthews |
| M. Hartzman | M. Nakahira |
| W. J. Heilker | R. M. Wilson |

Special Working Group on Environmental Effects (SG-D) (SC III)

| | |
|---------------------------|-----------------------------|
| W. Z. Novak, <i>Chair</i> | S. Yukawa |
| R. S. Hill III | Y. H. Choi, <i>Delegate</i> |
| C. L. Hoffmann | |

Subgroup on General Requirements (SC III & SC 3C)

| | |
|---------------------------------|---------------|
| W. C. LaRochelle, <i>Chair</i> | R. D. Mile |
| C. A. Lizotte, <i>Secretary</i> | M. R. Minick |
| A. Appleton | B. B. Scott |
| J. R. Berry | H. K. Sharma |
| W. P. Golini | W. K. Sowder |
| E. A. Mayhew | D. M. Vickery |
| R. P. McIntyre | D. V. Walshe |

Subgroup on Materials, Fabrication, and Examination (SC III)

| | |
|--------------------------------|---------------|
| C. L. Hoffmann, <i>Chair</i> | H. Murakami |
| G. P. Milley, <i>Secretary</i> | M. Nakahira |
| W. H. Borter | C. J. Pieper |
| D. M. Doyle | N. M. Simpson |
| G. M. Foster | W. J. Sperko |
| G. B. Georgiev | J. R. Stinson |
| R. M. Jessee | K. B. Stuckey |
| C. C. Kim | A. D. Watkins |
| M. Lau | S. Yukawa |

Subgroup on Pressure Relief (SC III)

| | |
|-----------------------------------|----------------|
| S. F. Harrison, Jr., <i>Chair</i> | A. L. Szeglin |
| E. M. Petrosky | D. G. Thibault |

Subgroup on Strategy and Management (SC III, Divisions 1 and 2)

| | |
|------------------------------|------------------|
| R. W. Barnes, <i>Chair</i> | M. F. Hessheimer |
| J. R. Cole, <i>Secretary</i> | R. S. Hill III |
| B. K. Bobo | E. V. Imbro |
| N. Broom | R. M. Jessee |
| B. A. Erler | R. F. Reedy |
| C. M. Faidy | Y. Urabe |
| J. M. Helmey | |

Special Working Group on Editing and Review (SC III)

| | |
|---------------------------|------------------|
| R. F. Reedy, <i>Chair</i> | R. P. Deubler |
| W. H. Borter | B. A. Erler |
| M. N. Bressler | W. C. LaRochelle |
| D. L. Caldwell | J. D. Stevenson |

Subgroup on Graphite Core Components (SC III)

| | |
|-------------------------------|----------------|
| T. D. Burchell, <i>Chair</i> | O. Gelineau |
| C. A. Sanna, <i>Secretary</i> | M. N. Mitchell |
| R. L. Bratton | N. N. Nemeth |
| M. W. Davies | T. Oku |
| S. W. Doms | M. Srinivasan |
| S. F. Duffy | |

JOINT ACI-ASME COMMITTEE ON CONCRETE COMPONENTS FOR NUCLEAR SERVICE (SC 3C)

| | |
|------------------------------------|----------------------------------|
| T. C. Inman, <i>Chair</i> | J. Gutierrez |
| A. C. Eberhardt, <i>Vice Chair</i> | J. K. Harrold |
| C. A. Sanna, <i>Secretary</i> | M. F. Hessheimer |
| N. Alchaar | T. E. Johnson |
| T. D. Al-Shawaf | N.-H. Lee |
| J. F. Artuso | B. B. Scott |
| H. G. Ashar | R. E. Shewmaker |
| M. Elgohary | J. D. Stevenson |
| B. A. Erler | A. Y. C. Wong |
| F. Farzam | T. Watson, <i>Liaison Member</i> |

SUBCOMMITTEE ON HEATING BOILERS (SC IV)

| | |
|-----------------------------------|--------------------------------------|
| P. A. Molvie, <i>Chair</i> | K. M. McTague |
| S. V. Voorhees, <i>Vice Chair</i> | B. W. Moore |
| G. Moino, <i>Secretary</i> | E. A. Nordstrom |
| T. L. Bedeaux | T. M. Parks |
| D. C. Bixby | J. L. Seigle |
| G. Bynog | R. V. Wielgoszinski |
| J. Calland | F. P. Barton, <i>Honorary Member</i> |
| J. P. Chicoine | R. B. Duggan, <i>Honorary Member</i> |
| C. M. Dove | W. L. Haag, Jr. |
| W. L. Haag, Jr. | J. A. Hall |
| J. A. Hall | J. D. Hoh |
| J. D. Hoh | D. J. Jenkins |
| D. J. Jenkins | W. D. Lemos |
| W. D. Lemos | |

Subgroup on Care and Operation of Heating Boilers (SC IV)

| | |
|------------------------------|---------------|
| S. V. Voorhees, <i>Chair</i> | K. M. McTague |
| T. L. Bedeaux | P. A. Molvie |
| K. J. Hoey | |

Subgroup on Cast Iron Boilers (SC IV)

| | |
|-----------------------------|-----------------|
| K. M. McTague, <i>Chair</i> | P. A. Larkin |
| T. L. Bedeaux | W. D. Lemos |
| J. P. Chicoine | C. P. McQuiggan |
| J. A. Hall | |

Subgroup on Materials (SC IV)

| | |
|----------------------------|--------------|
| P. A. Larkin, <i>Chair</i> | W. D. Lemos |
| J. A. Hall | J. L. Seigle |

Subgroup on Water Heaters (SC IV)

| | |
|-------------------------------|-----------------|
| W. L. Haag, Jr., <i>Chair</i> | K. M. McTague |
| J. Calland | F. J. Schreiner |
| T. D. Gantt | M. A. Taylor |
| W. D. Lemos | T. E. Trant |

Subgroup on Welded Boilers (SC IV)

| | |
|-----------------------------|---------------------|
| T. L. Bedeaux, <i>Chair</i> | E. A. Nordstrom |
| J. Calland | J. L. Seigle |
| C. M. Dove | R. V. Wielgoszinski |
| W. D. Lemos | |

SUBCOMMITTEE ON NONDESTRUCTIVE EXAMINATION (SC V)

| | |
|---------------------------------|--|
| J. E. Batey, <i>Chair</i> | D. R. Quattlebaum, Jr. |
| F. B. Kovacs, <i>Vice Chair</i> | F. J. Sattler |
| S. Vasquez, <i>Secretary</i> | B. H. Clark, Jr., <i>Honorary Member</i> |
| S. J. Akrin | H. C. Graber, <i>Honorary Member</i> |
| J. E. Aycok | O. F. Hedden, <i>Honorary Member</i> |
| A. S. Birks | J. R. MacKay, <i>Honorary Member</i> |
| P. L. Brown | T. G. McCarty, <i>Honorary Member</i> |
| N. Y. Faransso | |
| A. F. Garbolevsky | |
| G. W. Hembree | |
| R. W. Kruzic | |
| J. F. Manning | |
| R. D. McGuire | |

**Subgroup on General Requirements/
Personnel Qualifications and Inquiries (SC V)**

R. D. McGuire, *Chair*
J. E. Batey
A. S. Birks
N. Y. Faransso
G. W. Hembree
J. W. Houf
J. R. MacKay
J. P. Swezy, Jr.

Subgroup on Surface Examination Methods (SC V)

A. S. Birks, *Chair*
S. J. Akrin
P. L. Brown
N. Y. Faransso
G. W. Hembree
R. W. Kruzic
D. R. Quattlebaum, Jr.
F. J. Sattler
M. J. Wheel

Subgroup on Volumetric Methods (SC V)

G. W. Hembree, *Chair*
S. J. Akrin
J. E. Aycock
J. E. Batey
P. L. Brown
N. Y. Faransso
A. F. Garbolevsky
R. W. Hardy
R. A. Kellerhall
F. B. Kovacs
R. W. Kruzic
J. F. Manning
F. J. Sattler

Working Group on Acoustic Emissions (SG-VM) (SC V)

N. Y. Faransso, *Chair*
J. E. Aycock
J. E. Batey
J. F. Manning

Working Group on Radiography (SG-VM) (SC V)

F. B. Kovacs, *Chair*
S. J. Akrin
J. E. Aycock
J. E. Batey
P. L. Brown
N. Y. Faransso
A. F. Garbolevsky
R. W. Hardy
G. W. Hembree
R. W. Kruzic
T. L. Plasek

Working Group on Ultrasonics (SG-VM) (SC V)

R. W. Kruzic, *Chair*
J. E. Aycock
N. Y. Faransso
O. F. Hedden
R. A. Kellerhall
J. F. Manning
M. D. Moles
F. J. Sattler

SUBCOMMITTEE ON PRESSURE VESSELS (SC VIII)

T. P. Pastor, *Chair*
K. Mokhtarian, *Vice Chair*
S. J. Rossi, *Secretary*
R. J. Basile
J. Cameron
D. B. Demichael
J. P. Glaspie
M. Gold
W. S. Jacobs
G. G. Karcher
K. T. Lau
J. S. Lee
R. Mahadeen
S. Malone
R. W. Mikitka
U. R. Miller
C. C. Neely
D. T. Peters
M. J. Pischke
M. D. Rana
G. B. Rawls, Jr.
S. C. Roberts
C. D. Rodery
K. J. Schneider
A. Selz
J. R. Sims, Jr.
E. A. Steen
K. K. Tam
E. Uptis
E. L. Thomas, Jr., *Honorary Member*

Subgroup on Design (SC VIII)

U. R. Miller, *Chair*
R. E. Knoblock, *Secretary*
O. A. Barsky
R. J. Basile
M. R. Breach
F. L. Brown
J. R. Farr
J. P. Glaspie
C. E. Hinnant
W. S. Jacobs
M. D. Lower
R. W. Mikitka
K. Mokhtarian
T. P. Pastor
M. D. Rana
G. B. Rawls, Jr.
S. C. Roberts
C. D. Rodery
A. Selz
S. C. Shah
J. C. Sowinski
C. H. Sturgeon
D. A. Swanson
K. K. Tam
E. L. Thomas, Jr.
R. A. Whipple

Subgroup on Fabrication and Inspection (SC VIII)

C. D. Rodery, *Chair*
E. A. Steen, *Vice Chair*
J. L. Arnold
L. F. Campbell
H. E. Gordon
W. S. Jacobs
D. J. Kreft
C. D. Lamb
J. S. Lee
B. R. Morelock
M. J. Pischke
M. J. Rice
B. F. Shelley
J. P. Swezy, Jr.

Subgroup on General Requirements (SC VIII)

S. C. Roberts, *Chair*
D. B. Demichael, *Secretary*
R. J. Basile
J. P. Glaspie
K. T. Lau
M. D. Lower
C. C. Neely
A. S. Olivares
F. L. Richter
K. J. Schneider
D. B. Stewart
D. A. Swanson
K. K. Tam

Subgroup on Heat Transfer Equipment (SC VIII)

R. Mahadeen, *Chair*
G. Auriolles, *Secretary*
S. R. Babka
J. H. Barbee
O. A. Barsky
I. G. Campbell
M. D. Clark
J. I. Gordon
M. J. Holtz
F. E. Jehrio
B. J. Lerch
S. Mayeux
U. R. Miller
T. W. Norton
F. Osweiler
R. J. Stastny
S. Yokell
R. P. Zoldak
S. M. Caldwell, *Honorary Member*

Subgroup on High-Pressure Vessels (SC VIII)

J. R. Sims, Jr., *Chair*
S. Vasquez, *Secretary*
L. P. Antalffy
R. C. Biel
D. J. Burns
P. N. Chaku
R. D. Dixon
M. E. Dupre
D. M. Fryer
W. Hiller
A. H. Honza
M. M. James
P. Jansson
J. A. Kapp
J. Keltjens
D. P. Kendall
A. K. Khare
M. D. Mann
S. C. Mordre
G. J. Mraz
E. H. Perez
D. T. Peters
E. D. Roll
F. W. Tatar
S. Terada

Subgroup on Materials (SC VIII)

J. Cameron, *Chair*
E. E. Morgenegg, *Secretary*
D. C. Agarwal
J. F. Grubb
E. L. Hibner
M. Katcher

W. M. Lundy
E. G. Nisbett
D. W. Raho
R. C. Sutherlin
E. Uptis

Special Working Group on Graphite Pressure Equipment (SC VIII)

S. Malone, *Chair*
U. D'Urso, *Secretary*
F. L. Brown

M. R. Minick
E. Soltow
A. A. Stupica

Special Working Group on High-Pressure Vessels (SC VIII)

S. Vasquez, *Secretary*

Task Group on Impulsively Loaded Vessels (SC VIII)

R. E. Nickell, *Chair*
G. A. Antaki
D. D. Barker
R. C. Biel
D. W. Bowman
D. L. Caldwell
A. M. Clayton

J. E. Didlake, Jr.
T. A. Duffey
R. Forgan
B. L. Haroldsen
H. L. Heaton
E. A. Rodriguez
J. R. Sims, Jr.

SUBCOMMITTEE ON WELDING (SC IX)

J. G. Feldstein, *Chair*
W. J. Sperko, *Vice Chair*
J. D. Wendler, *Secretary*
D. A. Bowers
R. K. Brown, Jr.
M. L. Carpenter
L. P. Connor
P. D. Flenner
J. M. Given, Jr.
J. S. Lee
W. M. Lundy

R. D. McGuire
B. R. Newmark
A. S. Olivares
M. J. Pischke
S. D. Reynolds, Jr.
M. J. Rice
M. B. Sims
G. W. Spohn III
M. J. Stanko
P. L. Van Fosson
R. R. Young

Subgroup on Brazing (SC IX)

M. J. Pischke, *Chair*
E. W. Beckman
L. F. Campbell
M. L. Carpenter

A. F. Garbolevsky
C. F. Jeerings
J. P. Swezy, Jr.

Subgroup on General Requirements (SC IX)

B. R. Newmark, *Chair*
P. R. Evans
R. M. Jessee
A. S. Olivares

H. B. Porter
P. L. Sturgill
K. R. Willens

Subgroup on Materials (SC IX)

M. L. Carpenter, *Chair*
J. L. Arnold
M. Bernasek
L. P. Connor
R. M. Jessee
C. C. Kim

T. Melfi
S. D. Reynolds, Jr.
C. E. Sainz
W. J. Sperko
M. J. Stanko
R. R. Young

Subgroup on Performance Qualification (SC IX)

D. A. Bowers, *Chair*
V. A. Bell
L. P. Connor
R. B. Corbit
P. R. Evans
P. D. Flenner
J. M. Given, Jr.

K. L. Hayes
J. S. Lee
W. M. Lundy
R. D. McGuire
M. B. Sims
G. W. Spohn III

Subgroup on Procedure Qualification (SC IX)

D. A. Bowers, *Chair*
M. J. Rice, *Secretary*
M. Bernasek
R. K. Brown, Jr.
A. S. Olivares
S. D. Reynolds, Jr.

M. B. Sims
W. J. Sperko
S. A. Sprague
J. P. Swezy, Jr.
P. L. Van Fosson
T. C. Wiesner

Honorary Member (SC IX)

W. K. Scattergood

SUBCOMMITTEE ON FIBER-REINFORCED PLASTIC PRESSURE VESSELS (SC X)

D. Eisberg, *Chair*
P. J. Conlisk, *Vice Chair*
S. Vasquez, *Secretary*
F. L. Brown
J. L. Bustillos
T. W. Cowley
T. J. Fowler
D. H. Hodgkinson
L. E. Hunt
D. L. Keeler
B. M. Linnemann

J. C. Murphy
D. J. Painter
D. J. Pinell
G. Ramirez
J. R. Richter
J. A. Rolston
B. F. Shelley
F. W. Van Name
D. O. Yancey, Jr.
P. H. Ziehl

SUBCOMMITTEE ON NUCLEAR INSERVICE INSPECTION (SC XI)

G. C. Park, *Chair*
R. W. Swayne, *Vice Chair*
R. L. Crane, *Secretary*
W. H. Bamford, Jr.
R. C. Cipolla
D. D. Davis
R. L. Dyle
E. L. Farrow
R. E. Gimple
F. E. Gregor
K. Hasegawa
D. O. Henry
R. D. Kerr
S. D. Kulat
G. L. Lagleder
D. W. Lamond
J. T. Lindberg
B. R. Newton

W. E. Norris
K. Rhyne
W. R. Rogers III
D. A. Scarth
F. J. Schaaf, Jr.
J. C. Spanner, Jr.
J. E. Staffiera
G. L. Stevens
E. W. Throckmorton III
D. E. Waskey
R. A. West
C. J. Wirtz
C. S. Withers
R. A. Yonekawa
K. K. Yoon
T. Yuhara
Y.-S. Chang, *Delegate*

Executive Committee (SC XI)

| | |
|-------------------------------|------------------------|
| R. W. Swayne, <i>Chair</i> | O. F. Hedden |
| G. C. Park, <i>Vice Chair</i> | C. G. McCargar |
| R. L. Crane, <i>Secretary</i> | W. E. Norris |
| W. H. Bamford, Jr. | K. Rhyne |
| D. D. Davis | F. J. Schaaf, Jr. |
| R. L. Dyle | J. C. Spanner, Jr. |
| R. E. Gimple | E. W. Throckmorton III |
| F. E. Gregor | R. A. Yonekawa |

Honorary Members (SC XI)

| | |
|---------------|-------------------|
| L. J. Chockie | J. P. Houstrup |
| C. D. Cowfer | L. R. Katz |
| O. F. Hedden | P. C. Riccardella |

Subgroup on Evaluation Standards (SC XI)

| | |
|----------------------------------|------------------------------|
| W. H. Bamford, Jr., <i>Chair</i> | K. Koyama |
| G. L. Stevens, <i>Secretary</i> | D. R. Lee |
| R. C. Cipolla | H. S. Mehta |
| S. Coffin | J. G. Merkle |
| G. H. De Boo | S. Ranganath |
| B. R. Ganta | D. A. Scarth |
| T. J. Griesbach | K. R. Wichman |
| K. Hasegawa | K. K. Yoon |
| D. N. Hopkins | Y.-S. Chang, <i>Delegate</i> |
| Y. Imamura | |

Working Group on Flaw Evaluation (SG-ES) (SC XI)

| | |
|--------------------------------|-------------------|
| R. C. Cipolla, <i>Chair</i> | J. G. Merkle |
| G. H. De Boo, <i>Secretary</i> | M. A. Mitchell |
| W. H. Bamford, Jr. | K. Miyazaki |
| M. Basol | R. K. Qashu |
| J. M. Bloom | S. Ranganath |
| B. R. Ganta | P. J. Rush |
| T. J. Griesbach | D. A. Scarth |
| H. L. Gustin | T. S. Schurman |
| F. D. Hayes | W. L. Server |
| P. H. Hoang | F. A. Simonen |
| D. N. Hopkins | K. R. Wichman |
| Y. Imamura | G. M. Wilkowski |
| K. Koyama | K. K. Yoon |
| D. R. Lee | S. Yukawa |
| H. S. Mehta | V. A. Zilberstein |

Working Group on Operating Plant Criteria (SG-ES) (SC XI)

| | |
|-------------------------------|----------------|
| T. J. Griesbach, <i>Chair</i> | R. Pace |
| K. R. Baker | S. Ranganath |
| W. H. Bamford, Jr. | W. L. Server |
| H. Behnke | E. A. Siegel |
| B. A. Bishop | F. A. Simonen |
| T. L. Dickson | G. L. Stevens |
| S. R. Gosselin | D. P. Weakland |
| S. N. Malik | K. K. Yoon |
| H. S. Mehta | |

Working Group on Pipe Flaw Evaluation (SG-ES) (SC XI)

| | |
|-----------------------------------|-------------------|
| D. A. Scarth, <i>Chair</i> | K. Hasegawa |
| G. M. Wilkowski, <i>Secretary</i> | P. H. Hoang |
| T. A. Bacon | D. N. Hopkins |
| W. H. Bamford, Jr. | K. Kashima |
| R. C. Cipolla | H. S. Mehta |
| N. G. Cofie | K. Miyazaki |
| S. K. Daftuar | J. S. Panesar |
| G. H. De Boo | P. J. Rush |
| E. Friedman | K. K. Yoon |
| B. R. Ganta | V. A. Zilberstein |
| L. F. Goyette | |

Subgroup on Liquid-Metal-Cooled Systems (SC XI)

| | |
|------------------------------|-------------|
| C. G. McCargar, <i>Chair</i> | W. L. Chase |
|------------------------------|-------------|

Subgroup on Nondestructive Examination (SC XI)

| | |
|----------------------------------|-------------------|
| J. C. Spanner, Jr., <i>Chair</i> | D. O. Henry |
| G. A. Lofthus, <i>Secretary</i> | M. R. Hum |
| N. R. Bentley | G. L. Lagleder |
| T. L. Chan | J. T. Lindberg |
| C. B. Cheezem | G. R. Perkins |
| D. R. Cordes | A. S. Reed |
| F. J. Dodd | F. J. Schaaf, Jr. |
| F. E. Dohmen | C. J. Wirtz |
| M. E. Gothard | |

Working Group on Personnel Qualification and Surface, Visual, and Eddy Current Examination (SG-NDE) (SC XI)

| | |
|--------------------------------|------------------------|
| D. R. Cordes, <i>Secretary</i> | D. R. Quattlebaum, Jr. |
| B. L. Curtis | A. S. Reed |
| N. Farenbaugh | D. Spake |
| G. B. Georgiev | J. C. Spanner, Jr. |
| D. O. Henry | C. J. Wirtz |
| J. T. Lindberg | |

Working Group on Pressure Testing (SG-WCS) (SC XI)

| | |
|----------------------------------|---------------------|
| D. W. Lamond, <i>Chair</i> | R. E. Hall |
| J. M. Boughman, <i>Secretary</i> | J. K. McClanahan |
| J. J. Churchwell | A. McNeill III |
| G. L. Fechter | B. L. Montgomery |
| K. W. Hall | E. J. Sullivan, Jr. |

Working Group on Procedure Qualification and Volumetric Examination (SG-NDE) (SC XI)

| | |
|---------------------------------|----------------|
| M. E. Gothard, <i>Chair</i> | R. Kellerhall |
| G. R. Perkins, <i>Secretary</i> | D. Kurek |
| C. B. Cheezem | G. L. Lagleder |
| A. D. Chockie | G. A. Lofthus |
| S. R. Doctor | C. E. Moyer |
| F. J. Dodd | S. A. Sabo |
| F. E. Dohmen | R. V. Swain |
| K. J. Hacker | |

Subgroup on Repair/Replacement Activities (SG-RRR)(SC XI)

| | |
|--------------------------------------|------------------|
| R. A. Yonekawa, <i>Chair</i> | R. D. Kerr |
| E. V. Farrell, Jr., <i>Secretary</i> | S. L. McCracken |
| S. B. Brown | B. R. Newton |
| R. E. Cantrell | J. E. O'Sullivan |
| P. D. Fisher | W. R. Rogers III |
| E. B. Gerlach | R. R. Stevenson |
| R. E. Gimple | R. W. Swayne |
| D. R. Graham | D. E. Waskey |
| R. A. Hermann | J. G. Weicks |
| E. V. Imbro | C. S. Withers |

Working Group on Design and Programs (SG-RRR) (SC XI)

| | |
|-------------------------------|---------------------|
| E. B. Gerlach, <i>Chair</i> | D. R. Graham |
| S. B. Brown, <i>Secretary</i> | G. F. Harttraft |
| A. V. Du Bouchet | R. R. Stevenson |
| G. G. Elder | R. W. Swayne |
| E. V. Farrell, Jr. | A. H. Taufique |
| S. K. Fisher | T. P. Vassallo, Jr. |
| J. M. Gamber | R. A. Yonekawa |

Working Group on Welding and Special Repair Process (SG-RRR) (SC XI)

| | |
|----------------------------------|------------------|
| D. E. Waskey, <i>Chair</i> | R. D. Kerr |
| R. E. Cantrell, <i>Secretary</i> | C. C. Kim |
| S. J. Findlan | M. Lau |
| P. D. Fisher | S. L. McCracken |
| K. A. Gruss | B. R. Newton |
| M. L. Hall | J. E. O'Sullivan |
| R. A. Hermann | J. G. Weicks |
| R. P. Indap | K. R. Willens |

Subgroup on Water-Cooled Systems (SC XI)

| | |
|--------------------------------------|------------------------------------|
| E. W. Throckmorton III, <i>Chair</i> | S. D. Kulat |
| J. M. Agold, <i>Secretary</i> | D. W. Lamond |
| G. L. Belew | A. McNeill III |
| J. M. Boughman | W. E. Norris |
| D. D. Davis | D. Song |
| H. Q. Do | J. E. Staffiera |
| J. D. Ellis | H. M. Stephens, Jr. |
| E. L. Farrow | K. B. Thomas |
| M. J. Ferlisi | R. A. West |
| O. F. Hedden | G. E. Whitman |
| M. L. Herrera | H. L. Graves III, <i>Alternate</i> |

Working Group on Containment (SG-WCS) (SC XI)

| | |
|-------------------------------|--------------------------------|
| J. E. Staffiera, <i>Chair</i> | H. T. Hill |
| H. Ashar | R. D. Hough |
| S. G. Brown | C. N. Krishnaswamy |
| K. K. N. Chao | D. Naus |
| R. C. Cox | S. C. Petitgout |
| J. W. Crider | H. M. Stephens, Jr. |
| M. J. Ferlisi | W. E. Norris, <i>Alternate</i> |
| H. L. Graves III | |

Working Group on ISI Optimization (SG-WCS) (SC XI)

| | |
|--------------------------------|-------------------|
| E. A. Siegel, <i>Chair</i> | A. H. Mahindrakar |
| D. R. Cordes, <i>Secretary</i> | D. G. Naujock |
| R. L. Turner, <i>Secretary</i> | K. B. Thomas |
| W. H. Bamford, Jr. | G. E. Whitman |
| J. M. Boughman | Y. Yuguchi |
| R. E. Hall | |

Working Group on Implementation of Risk-Based Examination (SG-WCS) (SC XI)

| | |
|----------------------------------|------------------------------|
| S. D. Kulat, <i>Chair</i> | K. W. Hall |
| A. McNeill III, <i>Secretary</i> | D. W. Lamond |
| J. M. Agold | J. T. Lindberg |
| S. A. Ali | R. K. Mattu |
| B. A. Bishop | P. J. O'Regan |
| S. T. Chesworth | N. A. Palm |
| C. Cueto-Felgueroso | M. A. Pyne |
| H. Q. Do | F. A. Simonen |
| R. Fougerousse | R. A. West |
| M. R. Graybeal | J. C. Younger |
| J. Hakii | A. T. Keim, <i>Alternate</i> |

Working Group on Inspection of Systems and Components (SG-WCS) (SC XI)

| | |
|----------------------------|---------------|
| K. B. Thomas, <i>Chair</i> | S. D. Kulat |
| D. Song, <i>Secretary</i> | D. G. Naujock |
| V. L. Armentrout | T. Nomura |
| G. L. Belew | C. M. Ross |
| C. Cueto-Felgueroso | R. L. Turner |
| H. Q. Do | R. A. West |
| R. Fougerousse | G. E. Whitman |
| M. R. Hum | |

Working Group on General Requirements (SC XI)

| | |
|---------------------------------|---------------|
| K. Rhyne, <i>Chair</i> | E. L. Farrow |
| E. J. Maloney, <i>Secretary</i> | R. K. Mattu |
| T. L. Chan | S. R. Scott |
| J. D. Ellis | C. S. Withers |

Special Working Group on Editing and Review (SC XI)

| | |
|----------------------------|-----------------|
| R. W. Swayne, <i>Chair</i> | J. E. Staffiera |
| C. E. Moyer | C. J. Wirtz |

Special Working Group on Plant Life Extension (SC XI)

| | |
|---------------------------------|--------------|
| T. A. Meyer, <i>Chair</i> | P.-T. Kuo |
| D. V. Burgess, <i>Secretary</i> | R. L. Turner |
| D. D. Davis | G. G. Young |
| F. E. Gregor | |

Special Working Group on High-Temperature, Gas-Cooled Reactors (SC XI)

| | |
|----------------------------------|-------------------|
| J. Fletcher, <i>Chair</i> | B. J. Kruse |
| M. A. Lockwood, <i>Secretary</i> | M. N. Mitchell |
| N. Broom | F. J. Schaaf, Jr. |
| K. N. Fleming | R. W. Swayne |
| W. A. O. Kriel | |

SUBCOMMITTEE ON TRANSPORT TANKS (SC XII)

| | |
|--------------------------------|-----------------|
| A. Selz, <i>Chair</i> | G. McRae |
| L. Plano, <i>Secretary</i> | M. R. Minick |
| P. D. Stumpf, <i>Secretary</i> | M. D. Pham |
| A. N. Antoniou | M. D. Rana |
| C. Becht IV | S. Staniszewski |
| M. L. Coats | M. R. Toth |
| M. A. Garrett | A. P. Varghese |
| C. H. Hochman | S. V. Voorhees |
| G. G. Karcher | |

Subgroup on Design and Materials (SC XII)

| | |
|--------------------------|----------------|
| M. D. Rana, <i>Chair</i> | T. A. Rogers |
| G. G. Karcher | A. P. Varghese |
| S. L. McWilliams | M. R. Ward |
| N. J. Paulick | E. A. Whittle |
| M. D. Pham | |

Subgroup on Fabrication and Inspection (SC XII)

| | |
|------------------------------|----------------|
| S. V. Voorhees, <i>Chair</i> | D. J. Krefit |
| J. A. Byers | G. McRae |
| B. L. Gehl | M. R. Minick |
| L. D. Holsinger | A. S. Olivares |

Subgroup on General Requirements (SC XII)

| | |
|-----------------------------|------------------|
| C. H. Hochman, <i>Chair</i> | M. A. Garrett |
| T. W. Alexander | K. L. Gilmore |
| D. M. Allbritten | J. L. Rademacher |
| C. A. Betts | T. Rummel |
| J. F. Cannon | M. R. Toth |
| J. L. Freiler | L. Wolpert |
| W. L. Garfield | |

SUBCOMMITTEE ON BOILER AND PRESSURE VESSEL ACCREDITATION (SC-BPVA)

| | |
|----------------------------------|---------------------------------------|
| W. C. LaRochelle, <i>Chair</i> | M. A. DeVries, <i>Alternate</i> |
| P. D. Edwards, <i>Vice Chair</i> | C. E. Ford, <i>Alternate</i> |
| K. I. Baron, <i>Secretary</i> | T. E. Hansen, <i>Alternate</i> |
| M. B. Doherty | G. L. Hollinger, <i>Alternate</i> |
| P. Hackford | D. J. Jenkins, <i>Alternate</i> |
| K. T. Lau | B. B. MacDonald, <i>Alternate</i> |
| L. E. McDonald | R. D. Mile, <i>Alternate</i> |
| K. M. McTague | G. P. Milley, <i>Alternate</i> |
| B. R. Morelock | T. W. Norton, <i>Alternate</i> |
| J. D. O'Leary | H. R. Staehr, <i>Alternate</i> |
| D. E. Tanner | J. A. West, <i>Alternate</i> |
| B. C. Turczynski | R. V. Wielgoszinski, <i>Alternate</i> |
| D. E. Tuttle | O. E. Trapp, <i>Senior Consultant</i> |
| E. A. Whittle | A. J. Spencer, <i>Honorary Member</i> |
| G. Bynog, <i>Alternate</i> | |

SUBCOMMITTEE ON NUCLEAR ACCREDITATION (SC-NA)

| | |
|-------------------------------------|---------------------------------------|
| R. R. Stevenson, <i>Chair</i> | D. E. Tanner |
| W. C. LaRochelle, <i>Vice Chair</i> | D. M. Vickery |
| J. Pang, <i>Secretary</i> | G. Bynog, <i>Alternate</i> |
| M. N. Bressler | G. Deily, <i>Alternate</i> |
| S. M. Goodwin | P. D. Edwards, <i>Alternate</i> |
| K. A. Huber | J. W. Highlands, <i>Alternate</i> |
| M. Kotb | K. M. Hottle, <i>Alternate</i> |
| J. C. Krane | B. G. Kovarik, <i>Alternate</i> |
| C. A. Lizotte | P. F. Prescott, <i>Alternate</i> |
| R. P. McIntyre | S. Toledo, <i>Alternate</i> |
| M. R. Minick | E. A. Whittle, <i>Alternate</i> |
| H. B. Prasse | R. V. Wielgoszinski, <i>Alternate</i> |
| T. E. Quaka | H. L. Wiger, <i>Alternate</i> |
| A. T. Roberts III | O. E. Trapp, <i>Senior Consultant</i> |

SUBCOMMITTEE ON DESIGN (SC-D)

| | |
|----------------------------|---------------------|
| R. J. Basile, <i>Chair</i> | D. P. Jones |
| R. W. Barnes | R. W. Mikitka |
| M. R. Breach | U. R. Miller |
| R. P. Deubler | W. J. O'Donnell |
| G. G. Graven | R. D. Schueler, Jr. |
| G. L. Hollinger | A. Selz |
| R. I. Jetter | |

Subgroup on Design Analysis (SC-D)

| | |
|-------------------------------|-------------------|
| G. L. Hollinger, <i>Chair</i> | K. Matsunaga |
| S. A. Adams | G. A. Miller |
| M. R. Breach | W. D. Reinhardt |
| R. G. Brown | D. H. Roarty |
| R. J. Gurdal | G. Sannazzaro |
| C. F. Heberling II | T. G. Seipp |
| C. E. Hinnant | D. A. Swanson |
| P. Hirschberg | G. Taxacher |
| D. P. Jones | E. L. Thomas, Jr. |
| A. Kalnins | R. A. Whipple |
| W. J. Koves | |

Subgroup on Elevated Temperature Design (SC-D)

| | |
|----------------------------|-----------------|
| R. I. Jetter, <i>Chair</i> | T. E. McGreevy |
| T. Asayama | K. A. Moore |
| C. Becht IV | W. J. O'Donnell |
| J. F. Cervenka | D. A. Osage |
| D. S. Griffin | J. S. Porowski |
| B. F. Hantz | B. Riou |
| M. H. Jawad | T.-L. Sham |
| W. J. Koves | M. S. Shelton |
| S. Majumdar | R. W. Swindeman |
| D. L. Marriott | |

Subgroup on Fatigue Strength (SC-D)

| | |
|-------------------------------|------------------|
| W. J. O'Donnell, <i>Chair</i> | D. P. Jones |
| S. A. Adams | G. Kharshafdjian |
| P. R. Donavin | S. Majumdar |
| R. J. Gurdal | T. Nakamura |
| C. F. Heberling II | D. H. Roarty |
| P. Hirschberg | G. Taxacher |
| P. Hsu | H. H. Ziada |

Subgroup on Openings (SC-D)

| | |
|---------------------------------|-----------------|
| M. R. Breach, <i>Chair</i> | J. P. Madden |
| R. W. Mikitka, <i>Secretary</i> | D. R. Palmer |
| G. G. Graven | J. A. Pfeifer |
| V. T. Hwang | M. D. Rana |
| J. C. Light | E. C. Rodabaugh |
| R. B. Luney | |

Special Working Group on Bolted Flanged Joints (SC-D)

| | |
|-----------------------------|---------------------|
| R. W. Mikitka, <i>Chair</i> | J. R. Payne |
| G. D. Bibel | P. G. Scheckermann |
| H. A. Bouzid | R. W. Schneider |
| A. Chaudouet | R. D. Schueler, Jr. |
| E. Michalopoulos | A. Selz |
| S. N. Pagay | M. S. Shelton |

**SUBCOMMITTEE ON
SAFETY VALVE REQUIREMENTS (SC-SVR)**

| | |
|-----------------------------------|-----------------|
| S. F. Harrison, Jr., <i>Chair</i> | J. P. Glaspie |
| J. A. West, <i>Vice Chair</i> | H. I. Gregg |
| S. J. Rossi, <i>Secretary</i> | W. F. Hart |
| J. F. Ball | C. A. Neumann |
| S. Cammeresi | T. M. Parks |
| A. Cox | D. K. Parrish |
| R. D. Danzy | D. J. Scallan |
| D. B. Demichael | J. C. Standfast |
| R. J. Doelling | Z. Wang |

Subgroup on Design (SC-SVR)

| | |
|--------------------------|--------------|
| J. A. West, <i>Chair</i> | H. I. Gregg |
| C. E. Bear | D. Miller |
| R. D. Danzy | T. Patel |
| R. J. Doelling | T. R. Tarbay |

Subgroup on General Requirements (SC-SVR)

| | |
|-------------------------------|------------------|
| D. B. Demichael, <i>Chair</i> | T. M. Parks |
| J. F. Ball | D. K. Parrish |
| G. Brazier | J. W. Ramsey |
| J. P. Glaspie | J. W. Richardson |
| C. A. Neumann | J. C. Standfast |

Subgroup on Testing (SC-SVR)

| | |
|----------------------|---------------|
| A. Cox, <i>Chair</i> | W. F. Hart |
| J. E. Britt | K. G. Roth |
| S. Cammeresi | D. J. Scallan |
| G. D. Goodson | Z. Wang |

**U.S. Technical Advisory Group ISO/TC 185
Safety Relief Valves**

| | |
|--------------------------------|------------|
| T. J. Bevilacqua, <i>Chair</i> | Y.-S. Lai |
| S. J. Rossi, <i>Secretary</i> | D. Miller |
| S. F. Harrison, Jr. | J. A. West |

Page intentionally blank

PERSONNEL

Officers of ASTM Committees

(Cooperating in the Development of the Specifications Herein)

As of February 28, 2006

A1 COMMITTEE ON STEEL, STAINLESS STEEL, AND RELATED ALLOYS

J. K. Mahaney, Jr., *Chair*
F. M. Christensen, *Producer*
Vice Chair
M. A. Demerest, *Producer*
Vice Chair
T. J. Mach, *Producer Vice*
Chair
E. R. Boes, *User Vice Chair*

G. M. Cobb, *User Vice Chair*
A. S. Melilli, *User Vice Chair*
G. A. Hayden, *Secretary*
T. E. Murphy, *Membership*
Secretary
G. Luciw, *Staff Manager*

A4 COMMITTEE ON IRON CASTINGS

R. W. Bonds, *Chair*
H. R. Sonderegger, *Vice Chair*
G. L. Simmons, *Secretary*

W. C. Bliss, *Membership*
Secretary
D. Rehiel, *Staff Manager*

Page intentionally blank

PREFACE

The American Society of Mechanical Engineers (ASME) and the American Society for Testing and Materials (ASTM) have cooperated for more than fifty years in the preparation of material specifications adequate for safety in the field of pressure equipment for ferrous and nonferrous materials, contained in Section II (Part A — Ferrous and Part B — Nonferrous) of the ASME Boiler and Pressure Vessel Code.

The evolution of this cooperative effort is contained in Professor A. M. Greene's "History of the ASME Boiler Code," which was published as a series of articles in *Mechanical Engineering* from July 1952 through August 1953 and is now available from ASME in a special bound edition. The following quotations from this history, which was based upon the minutes of the ASME Boiler and Pressure Vessel Committee, will help focus on the cooperative nature of the specifications found in Section II, Material Specifications.

"General discussion of material specifications comprising Paragraphs 1 to 112 of Part 2 and the advisability of having them agree with ASTM specifications," (1914).

"ASME Subcommittee appointed to confer with ASTM," (1916).

"Because of this cooperation the specifications of the 1918 Edition of the ASME Boiler Code were more nearly in agreement with ASTM specifications. In the 1924 Edition of the Code, 10 specifications were in complete agreement with ASTM specifications, 4 in substantial agreement and 2 covered materials for which ASTM had no corresponding specifications."

"In Section II, Material Specifications, the paragraphs were given new numbers beginning with S-1 and extending to S-213," (1925).

"Section II was brought into agreement with changes made in the latest ASTM specifications since 1921," (1932).

"The Subcommittee on Material Specifications arranged for the introduction of the revisions of many of the specifications so that they would agree with the latest form of the earlier ASTM specifications..." (1935).

From the preceding, it is evident that many of the material specifications were prepared by the Boiler and Pressure Vessel Code Committees, then subsequently, by cooperative action, modified and identified as ASTM specifications. Section II, Parts A and B, currently contain many

material specifications which are identical with the corresponding ASTM specifications and some which have been modified for Code usage. Many of these specifications are published in dual format. That is, they contain both U.S. Customary units and SI units. The metrication protocols followed in the specifications are those adopted by ASTM, and are usually to the rules of IEEE/ASTM 10-1997 Standard for the Use of the International System of Units (SI): The Modern Metric System.

In 1969, the American Welding Society began publication of specifications for welding rods, electrodes, and filler metals, hitherto issued by ASTM. The Boiler and Pressure Vessel Committee has recognized this new arrangement, and is now working with AWS on these specifications. Section II, Part C, contains the welding material specifications approved for Code use.

In 1992, the ASME Board of Pressure Technology Codes and Standards endorsed the use of non-ASTM material for Boiler and Pressure Vessel Code applications. It is the intent to follow the procedures and practices currently in use to implement the adoption of non-ASTM materials.

All identical specifications are indicated by the ASME/originating organization symbols. The specifications prepared and copyrighted by ASTM, AWS, and other originating organizations are reproduced in the Code with the permission of the respective Society. The ASME Boiler and Pressure Vessel Committee has given careful consideration to each new and revised specification, and has made such changes as they deemed necessary to make the specification adaptable for Code usage. In addition, ASME has furnished ASTM with the basic requirements that should govern many proposed new specifications. Joint action will continue an effort to make the ASTM, AWS, and ASME specifications identical.

To assure that there will be a clear understanding on the part of the users of Section II, ASME publishes both the identical specifications and those amended for Code usage in three parts every three years, in the same page size to match the other sections of the Code, and Addenda are issued annually to provide the latest changes in Section II specifications.

The ASME Boiler and Pressure Vessel Code has been adopted into law by 50 states and many municipalities in the United States and by all of the Canadian provinces.